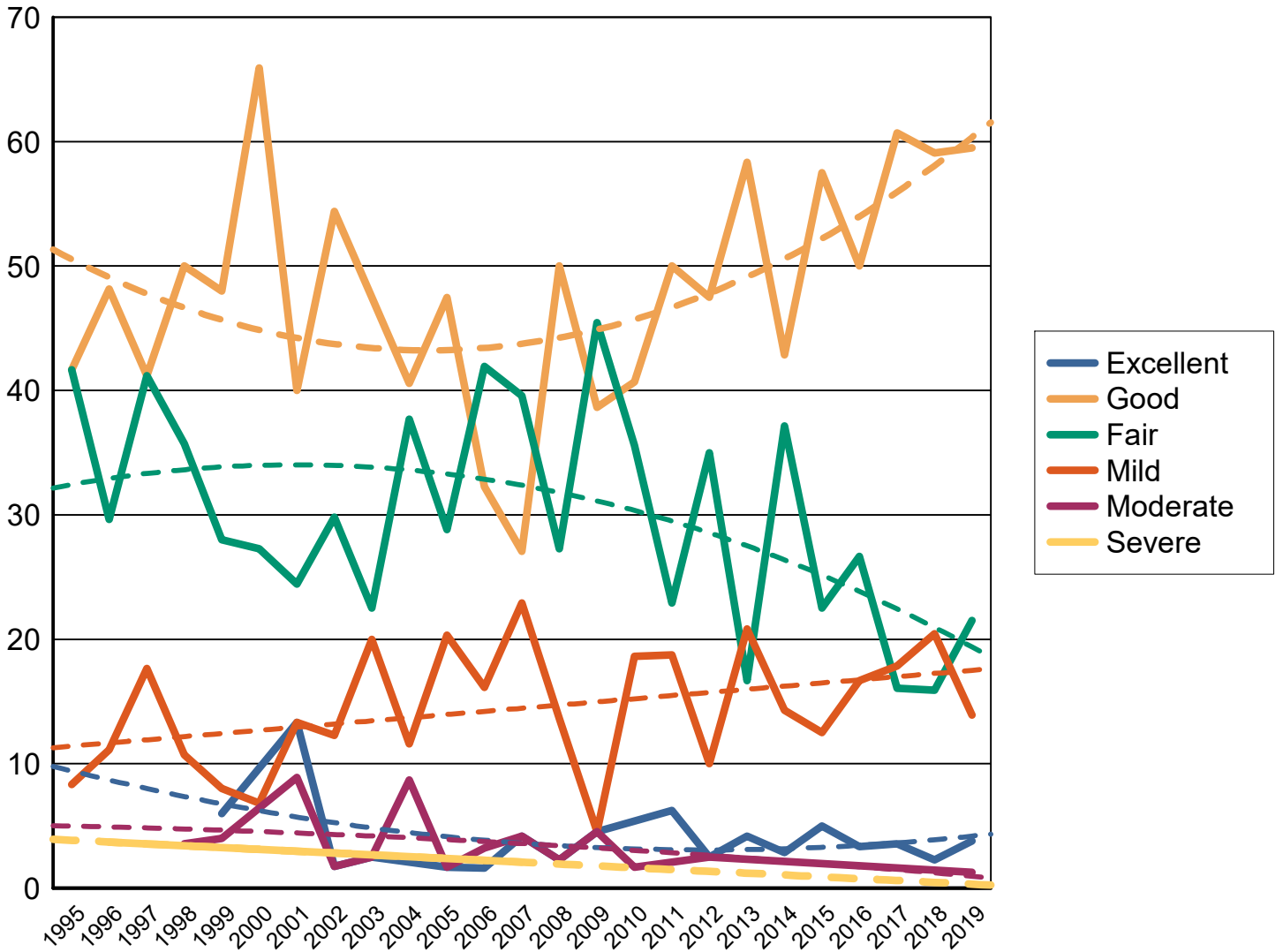


All data as of 12-31-2022

Dysplastic rank, all breeds with more than 100 cases

		Normals		Equivocal or Carrier		Abnormal	
Hips	47 of 186	950	80.44%	24	2.03%	207	17.53% CHIC required
Cardiac		439	99.77%	0		1	0.23% CHIC required
Thyroid		196	80.00%	31	12.65%	18	7.35% CHIC required
OFA EYE Registry		291	100.00%	0		0	CHIC required
Musladin-Lueke Syndrome		237	90.80%	24	9.20%	0	CHIC required
Elbow		212	100.00%	0		0	
Patella		265	97.43%	0		7	2.57%
Degenerative Myelopathy		32	91.43%	1	2.86%	2	5.71%
Progressive Retinal Atrophy		11	91.67%	1	8.33%	0	
Advanced Cardiac		46	100.00%	0		0	
Imerslund-Grasbeck Syndrome		39	100.00%	0		0	
Lafora Epilepsy		10	100.00%	0		0	
Legg-Calve-Perthes		15	100.00%	0		0	
Factor VII Deficiency		88	45.36%	84	43.30%	22	11.34%
Primary Closed Angle Glaucoma		1	100.00%	0		0	
Pyruvate Kinase Deficiency		56	100.00%	0		0	
Rcd4 Progressive Retinal Atrophy		3	75.00%	1	25.00%	0	
Phosphofructokinase Deficiency		4	100.00%	0		0	
Cobalamin Malabsorption		6	100.00%	0		0	
Baer Hearing Test		7	100.00%	0		0	
Primary Open Angle Glaucoma		49	100.00%	0		0	
Factor XI Deficiency		1	100.00%	0		0	
Shoulder		2	100.00%	0		0	
Neonatal Cerebellar Cortical Degeneration		59	100.00%	0		0	

Hip percentages by rating with trendlines



Percent submitted to the open registry

Hips

<i>Report year</i>	<i>Cases</i>	<i>Excellent</i> %	<i>Good</i> %	<i>Fair</i> %	<i>Borderline</i> %	<i>Mild</i> %	<i>Moderate</i> %	<i>Severe</i> %
1974	5	0	3 60.00%	2 40.00%	0	0	0	0
1975	3	0	1 33.33%	1 33.33%	0	1 33.33%	0	0
1976	2	0	1 50.00%	1 50.00%	0	0	0	0
1978	9	0	3 33.33%	4 44.44%	0	1 11.11%	1 11.11%	0
1980	2	0	0	2 100.00%	0	0	0	0
1981	5	0	5 100.00%	0	0	0	0	0
1982	2	0	1 50.00%	0	0	1 50.00%	0	0
1983	2	0	1 50.00%	1 50.00%	0	0	0	0
1984	3	0	1 33.33%	2 66.67%	0	0	0	0
1985	6	0	5 83.33%	0	0	0	1 16.67%	0
1986	5	0	3 60.00%	1 20.00%	0	1 20.00%	0	0
1987	5	0	2 40.00%	1 20.00%	0	1 20.00%	1 20.00%	0
1990	5	0	2 40.00%	0	0	2 40.00%	1 20.00%	0
1991	7	0	1 14.29%	5 71.43%	0	1 14.29%	0	0
1992	7	0	5 71.43%	2 28.57%	0	0	0	0
1993	16	1 6.25%	9 56.25%	2 12.50%	0	3 18.75%	1 6.25%	0
1994	16	0	9 56.25%	3 18.75%	0	3 18.75%	1 6.25%	0
1995	12	0	5 41.67%	5 41.67%	1 8.33%	1 8.33%	0	0
1996	27	0	13 48.15%	8 29.63%	2 7.41%	3 11.11%	0	1 3.70%
1997	17	0	7 41.18%	7 41.18%	0	3 17.65%	0	0
1998	28	0	14 50.00%	10 35.71%	0	3 10.71%	1 3.57%	0
1999	50	3 6.00%	24 48.00%	14 28.00%	3 6.00%	4 8.00%	2 4.00%	0

Percent submitted to the open registry

Hips

Report year	Cases	Excellent %	Good %	Fair %	Borderline %	Mild %	Moderate %	Severe %
2000	44	0	29	12	0	3	0	0
			65.91%	27.27%		6.82%		
2001	45	6	18	11	0	6	4	0
	8.89%	13.33%	40.00%	24.44%		13.33%	8.89%	
2002	57	1	31	17	0	7	1	0
	10.53%	1.75%	54.39%	29.82%		12.28%	1.75%	
2003	40	1	19	9	2	8	1	0
		2.50%	47.50%	22.50%	5.00%	20.00%	2.50%	
2004	69	0	28	26	1	8	6	0
	15.94%		40.58%	37.68%	1.45%	11.59%	8.70%	
2005	59	1	28	17	0	12	1	0
	20.34%	1.69%	47.46%	28.81%		20.34%	1.69%	
2006	62	1	20	26	3	10	2	0
	19.35%	1.61%	32.26%	41.94%	4.84%	16.13%	3.23%	
2007	48	2	13	19	0	11	2	1
	14.58%	4.17%	27.08%	39.58%		22.92%	4.17%	2.08%
2008	44	1	22	12	2	6	1	0
	29.55%	2.27%	50.00%	27.27%	4.55%	13.64%	2.27%	
2009	44	2	17	20	1	2	2	0
	31.82%	4.55%	38.64%	45.45%	2.27%	4.55%	4.55%	
2010	59	0	24	21	2	11	1	0
	42.37%		40.68%	35.59%	3.39%	18.64%	1.69%	
2011	48	3	24	11	1	9	0	0
	29.17%	6.25%	50.00%	22.92%	2.08%	18.75%		
2012	40	1	19	14	1	4	1	0
	45.00%	2.50%	47.50%	35.00%	2.50%	10.00%	2.50%	
2013	24	1	14	4	0	5	0	0
	37.50%	4.17%	58.33%	16.67%		20.83%		
2014	35	1	15	13	1	5	0	0
	37.14%	2.86%	42.86%	37.14%	2.86%	14.29%		
2015	40	2	23	9	1	5	0	0
	37.50%	5.00%	57.50%	22.50%	2.50%	12.50%		
2016	30	1	15	8	1	5	0	0
	30.00%	3.33%	50.00%	26.67%	3.33%	16.67%		
2017	56	2	34	9	1	10	0	0
	5.36%	3.57%	60.71%	16.07%	1.79%	17.86%		
2018	44	1	26	7	1	9	0	0
	29.55%	2.27%	59.09%	15.91%	2.27%	20.45%		
2019	79	3	47	17	0	11	1	0
	29.11%	3.80%	59.49%	21.52%		13.92%	1.27%	
Totals	1,203	34	581	354	24	176	32	2
		2.83%	48.30%	29.43%	2.00%	14.63%	2.66%	0.17%

Elbow

<i>Report Year</i>	<i>Cases</i>	<i>Normal %</i>	<i>Grade 1 %</i>	<i>Grade 2 %</i>	<i>Grade 3 %</i>	<i>Borderline %</i>
1996		2 100.00%				
1997		1 100.00%				
1998		4 100.00%				
1999		2 100.00%				
2000		5 100.00%				
2001		7 100.00%				
2002		3 100.00%				
2003		3 100.00%				
2004		5 100.00%				
2005		4 100.00%				
2006		16 100.00%				
2007		12 100.00%				
2008		8 100.00%				
2009		14 100.00%				
2010		8 100.00%				
2011		13 100.00%				
2012		13 100.00%				
2013		8 100.00%				
2014		10 100.00%				
2015		15 100.00%				
2016		13 100.00%				

Elbow

<i>Report Year</i>	<i>Cases</i>	<i>Normal</i> %	<i>Grade 1</i> %	<i>Grade 2</i> %	<i>Grade 3</i> %	<i>Borderline</i> %
2017		18 100.00%				
2018		15 100.00%				
2019		18 100.00%				
Totals		217 100.00%				

Baer Hearing Test

<i>Report year</i>	<i>Cases</i>	<i>Normal</i>	<i>% Normal</i>	<i>Abnormal</i>	<i>% Abnormal</i>	<i>Equivocal</i>	<i>% Equivocal</i>
Beagle							
2010	3	3	100.0				
2016	2	2	100.0				
2018	2	2	100.0				
Totals	7	7	100.0				

Cardiac

<i>Report year</i>	<i>Cases</i>	<i>Normal</i>	<i>% Normal</i>	<i>Abnormal</i>	<i>% Abnormal</i>	<i>Equivocal</i>	<i>% Equivocal</i>
Beagle							
1997	1	1	100.0				
2002	2	2	100.0				
2003	5	5	100.0				
2004	11	11	100.0				
2005	7	7	100.0				
2006	16	16	100.0				
2007	25	25	100.0				
2008	19	19	100.0				
2009	36	35	97.2	1	2.8		
2010	29	29	100.0				
2011	39	39	100.0				
2012	25	25	100.0				
2013	28	28	100.0				
2014	18	18	100.0				
2015	30	30	100.0				
2016	81	81	100.0				
2017	31	31	100.0				
2018	30	30	100.0				
Totals	433	432	99.8	1	0.2		

Degenerative Myelopathy

<i>Report year</i>	<i>Cases</i>	<i>Normal</i>	<i>% Normal</i>	<i>Abnormal</i>	<i>% Abnormal</i>	<i>Carrier</i>	<i>% Carrier</i>
Beagle							
2010	1	1	100.0				
2013	1	1	100.0				
2015	2	2	100.0				
2016	6	4	66.7	2	33.3		
2017	3	2	66.7			1	33.3
2018	10	10	100.0				
Totals	23	20	87.0	2	8.7	1	4.4

Eyes

<i>Report year</i>	<i>Cases</i>	<i>Normal</i>	<i>% Normal</i>	<i>Abnormal</i>	<i>% Abnormal</i>	<i>Breeder opt.</i>	<i>% Breeder opt.</i>
Beagle							
2012	6	5	83.3			1	16.7

Eyes

<i>Report year</i>	<i>Cases</i>	<i>Normal</i>	<i>% Normal</i>	<i>Abnormal</i>	<i>% Abnormal</i>	<i>Breeder opt.</i>	<i>% Breeder opt.</i>
2013	32	23	71.9			9	28.1
2014	31	24	77.4			7	22.6
2015	59	41	69.5			18	30.5
2016	39	26	66.7			13	33.3
2017	27	21	77.8			6	22.2
2018	52	37	71.2			15	28.9
Totals	246	177	72.0			69	28.1

Factor VII Deficiency

<i>Report year</i>	<i>Cases</i>	<i>Normal</i>	<i>% Normal</i>	<i>Abnormal</i>	<i>% Abnormal</i>	<i>Carrier</i>	<i>% Carrier</i>
Beagle							
2009	6	4	66.7			2	33.3
2011	26	14	53.9	4	15.4	8	30.8
2012	43	11	25.6	8	18.6	24	55.8
2013	13	3	23.1	1	7.7	9	69.2
2014	15	9	60.0	2	13.3	4	26.7
2015	21	11	52.4	2	9.5	8	38.1
2016	9	3	33.3			6	66.7
2017	23	16	69.6	3	13.0	4	17.4
2018	17	7	41.2	2	11.8	8	47.1
Totals	173	78	45.1	22	12.7	73	42.2

Legg-Calve-Perthes

<i>Report year</i>	<i>Cases</i>	<i>Normal</i>	<i>% Normal</i>	<i>Abnormal</i>	<i>% Abnormal</i>		
Beagle							
2017	3	3	100.0				
2018	4	4	100.0				
Totals	7	7	100.0				

Musladin-Lueke Syndrome

<i>Report year</i>	<i>Cases</i>	<i>Normal</i>	<i>% Normal</i>	<i>Abnormal</i>	<i>% Abnormal</i>	<i>Carrier</i>	<i>% Carrier</i>
Beagle							
2009	19	18	94.7			1	5.3
2010	34	32	94.1			2	5.9
2011	38	34	89.5			4	10.5
2012	32	28	87.5			4	12.5
2013	20	17	85.0			3	15.0
2014	26	24	92.3			2	7.7
2015	21	18	85.7			3	14.3
2016	11	11	100.0				
2017	22	20	90.9			2	9.1
2018	14	12	85.7			2	14.3
Totals	237	214	90.3			23	9.7

Patella

<i>Report year</i>	<i>Cases</i>	<i>Normal</i>	<i>% Normal</i>	<i>Abnormal</i>	<i>% Abnormal</i>
Beagle					
1999	2	2	100.0		
2002	1	1	100.0		
2004	3	3	100.0		
2005	2	2	100.0		
2006	32	32	100.0		
2007	15	15	100.0		
2008	3	3	100.0		
2009	12	11	91.7	1	8.3
2010	13	12	92.3	1	7.7
2011	13	11	84.6	2	15.4
2012	14	14	100.0		
2013	7	7	100.0		
2014	10	10	100.0		
2015	7	7	100.0		
2016	72	71	98.6	1	1.4
2017	31	31	100.0		
2018	26	24	92.3	2	7.7
Totals	263	256	97.3	7	2.7

Phosphofruktokinase Deficiency

<i>Report year</i>	<i>Cases</i>	<i>Normal</i>	<i>% Normal</i>	<i>Abnormal</i>	<i>% Abnormal</i>
Beagle					
2015	1	1	100.0		
2016	1	1	100.0		
2017	2	2	100.0		
Totals	4	4	100.0		

Primary Open Angle Glaucoma

<i>Report year</i>	<i>Cases</i>	<i>Normal</i>	<i>% Normal</i>	<i>Abnormal</i>	<i>% Abnormal</i>	<i>Carrier</i>	<i>% Carrier</i>
Beagle							
2012	2	2	100.0				
2013	5	5	100.0				
2014	2	2	100.0				
2015	6	6	100.0				
2016	5	5	100.0				
2017	4	4	100.0				
2018	10	10	100.0				
Totals	34	34	100.0				

Progressive Retinal Atrophy

<i>Report year</i>	<i>Cases</i>	<i>Normal</i>	<i>% Normal</i>	<i>Abnormal</i>	<i>% Abnormal</i>	<i>Carrier</i>	<i>% Carrier</i>
Beagle							
2018	9	9	100.0				

Progressive Retinal Atrophy

<i>Report year</i>	<i>Cases</i>	<i>Normal</i>	<i>% Normal</i>	<i>Abnormal</i>	<i>% Abnormal</i>	<i>Carrier</i>	<i>% Carrier</i>
Totals	9	9	100.0				

Pyruvate Kinase Deficiency

<i>Report year</i>	<i>Cases</i>	<i>Normal</i>	<i>% Normal</i>	<i>Abnormal</i>	<i>% Abnormal</i>	<i>Carrier</i>	<i>% Carrier</i>
Beagle							
2006	1	1	100.0				
2009	6	6	100.0				
2011	1	1	100.0				
2012	3	3	100.0				
2013	6	6	100.0				
2014	2	2	100.0				
2015	6	6	100.0				
2016	4	4	100.0				
2017	2	2	100.0				
2018	8	8	100.0				
Totals	39	39	100.0				

Rcd4 Progressive Retinal Atrophy

<i>Report year</i>	<i>Cases</i>	<i>Normal</i>	<i>% Normal</i>	<i>Abnormal</i>	<i>% Abnormal</i>	<i>Carrier</i>	<i>% Carrier</i>
Beagle							
2018	2	2	100.0				
Totals	2	2	100.0				

Shoulder

<i>Report year</i>	<i>Cases</i>	<i>Normal</i>	<i>% Normal</i>	<i>Abnormal</i>	<i>% Abnormal</i>
Beagle					
2015	1	1	100.0		
Totals	1	1	100.0		

Thyroid

<i>Report year</i>	<i>Cases</i>	<i>Normal</i>	<i>% Normal</i>	<i>Abnormal</i>	<i>% Abnormal</i>	<i>Equivocal</i>	<i>% Equivocal</i>
Beagle							
1997	1	1	100.0				
1999	3	3	100.0				
2000	6	6	100.0				
2001	8	7	87.5			1	12.5
2002	6	6	100.0				
2003	2	1	50.0			1	50.0
2004	7	5	71.4			2	28.6
2005	16	14	87.5	1	6.3	1	6.3
2006	9	7	77.8			2	22.2

Thyroid

<i>Report year</i>	<i>Cases</i>	<i>Normal</i>	<i>% Normal</i>	<i>Abnormal</i>	<i>% Abnormal</i>	<i>Equivocal</i>	<i>% Equivocal</i>
2007	20	13	65.0	1	5.0	6	30.0
2008	14	7	50.0	6	42.9	1	7.1
2009	18	14	77.8	2	11.1	2	11.1
2010	14	11	78.6	1	7.1	2	14.3
2011	14	9	64.3	2	14.3	3	21.4
2012	24	23	95.8			1	4.2
2013	5	3	60.0			2	40.0
2014	9	8	88.9	1	11.1		
2015	11	10	90.9			1	9.1
2016	14	10	71.4	1	7.1	3	21.4
2017	12	10	83.3	1	8.3	1	8.3
2018	16	13	81.3	1	6.3	2	12.5
Totals	229	181	79.0	17	7.4	31	13.5