

Bernese Mountain Dog

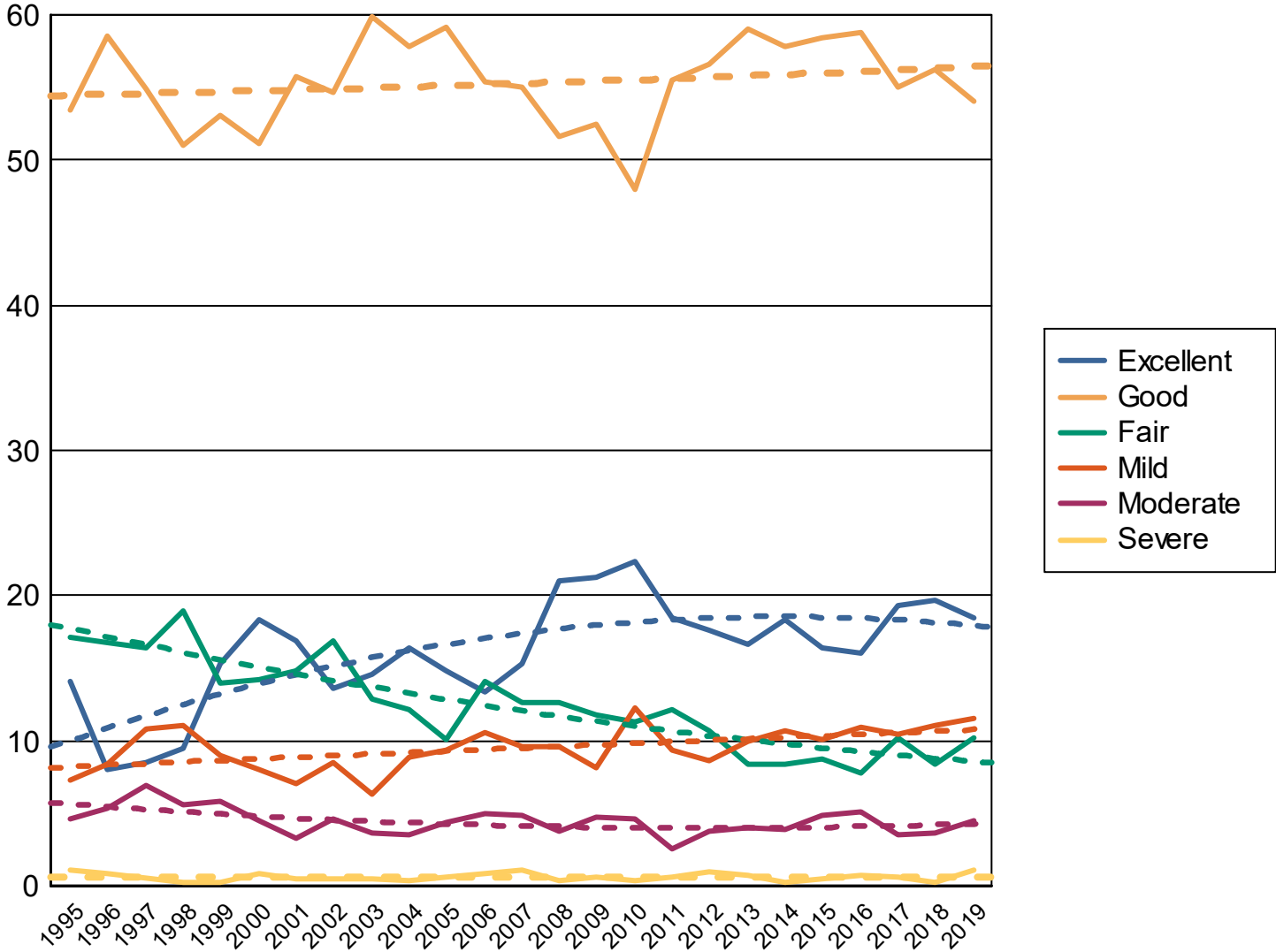
All data as of Dec-31-2021

*Dysplastic rank, all
breeds with more
than 100 cases*

		<i>Normals</i>		<i>Equival or Carrier</i>		<i>Abnormal</i>	
Hips	64 of 196	21825	82.86%	354	1.34%	4160	15.79%
Elbow	9 of 138	15403	73.51%	75	0.36%	5476	26.13%
Congenital Cardiac		5732	99.63%	11	0.19%	10	0.17%
Thyroid		931	87.58%	112	10.54%	20	1.88%
Basic Cardiac		706	99.44%	4	0.56%	0	
Mizzou Biomarker Study		11	73.33%	0		4	26.67%
Degenerative Myelopathy		1659	44.05%	1685	44.74%	422	11.21%
Chondrodystrophy (Cddy)		1	100.00%	0		0	
Baer Hearing Test		1	100.00%	0		0	
Patella		798	99.63%	0		3	0.37%
Exercise Induced Collapse		1	100.00%	0		0	
Legg-Calve-Perthes		47	100.00%	0		0	
Von Willebrands		1468	98.39%	24	1.61%	0	
Advanced Cardiac		888	99.00%	3	0.33%	6	0.67%
Ovc Hips		11	100.00%	0		0	
Ovc Elbows		13	100.00%	0		0	
Von Willebrands Cornell Blood Assa		4	100.00%	0		0	
Histiocytic Sarcoma Pre-Test Sh		44	100.00%	0		0	
Int'L Elbow Registry		2	100.00%	0		0	
OFA EYE Registry		3905	98.66%	0		53	1.34%
Int'L Hip Registry		2	100.00%	0		0	
Chondrodysplasia (Cdpa)		1	100.00%	0		0	
Shoulder		592	97.85%	1	0.17%	12	1.98%
Dentition Database		162	97.01%	0		5	2.99%
Degenerative Myelopathy B		300	92.88%	23	7.12%	0	

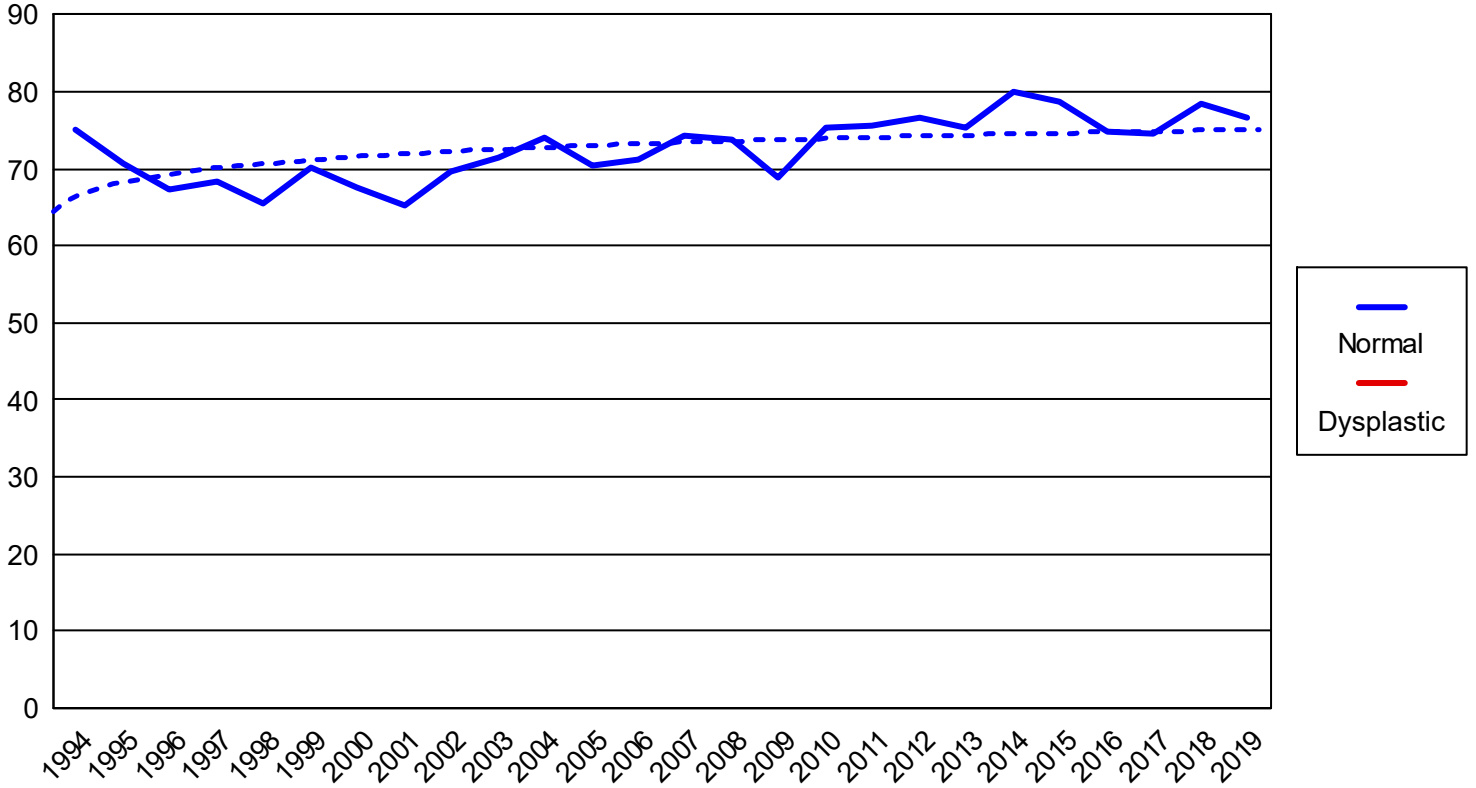
BERNESE MOUNTAIN DOG

Hip percentages by rating with trendlines



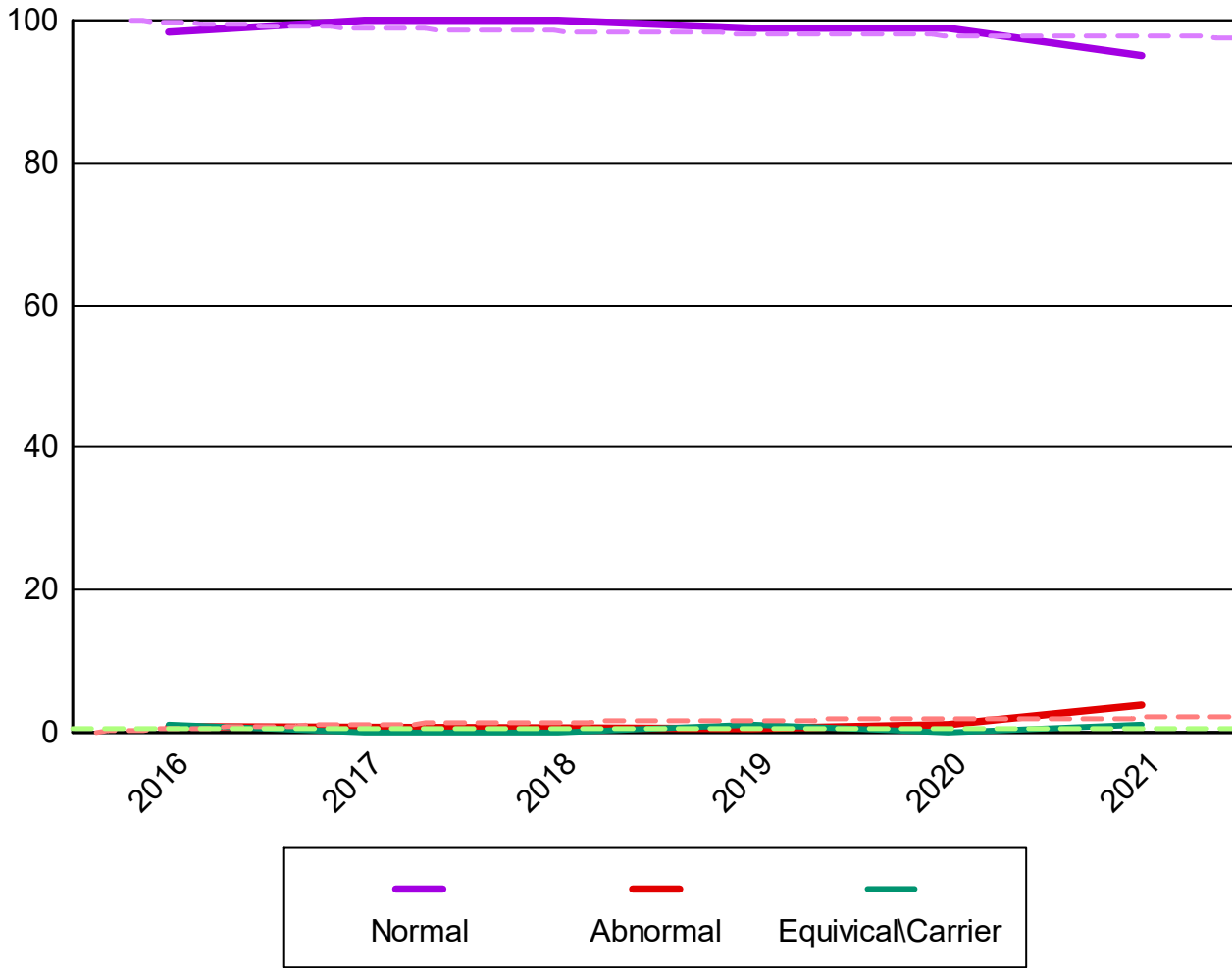
BERNESE MOUNTAIN DOG

Elbow percentages by rating with trendlines



ADVANCED CARDIAC

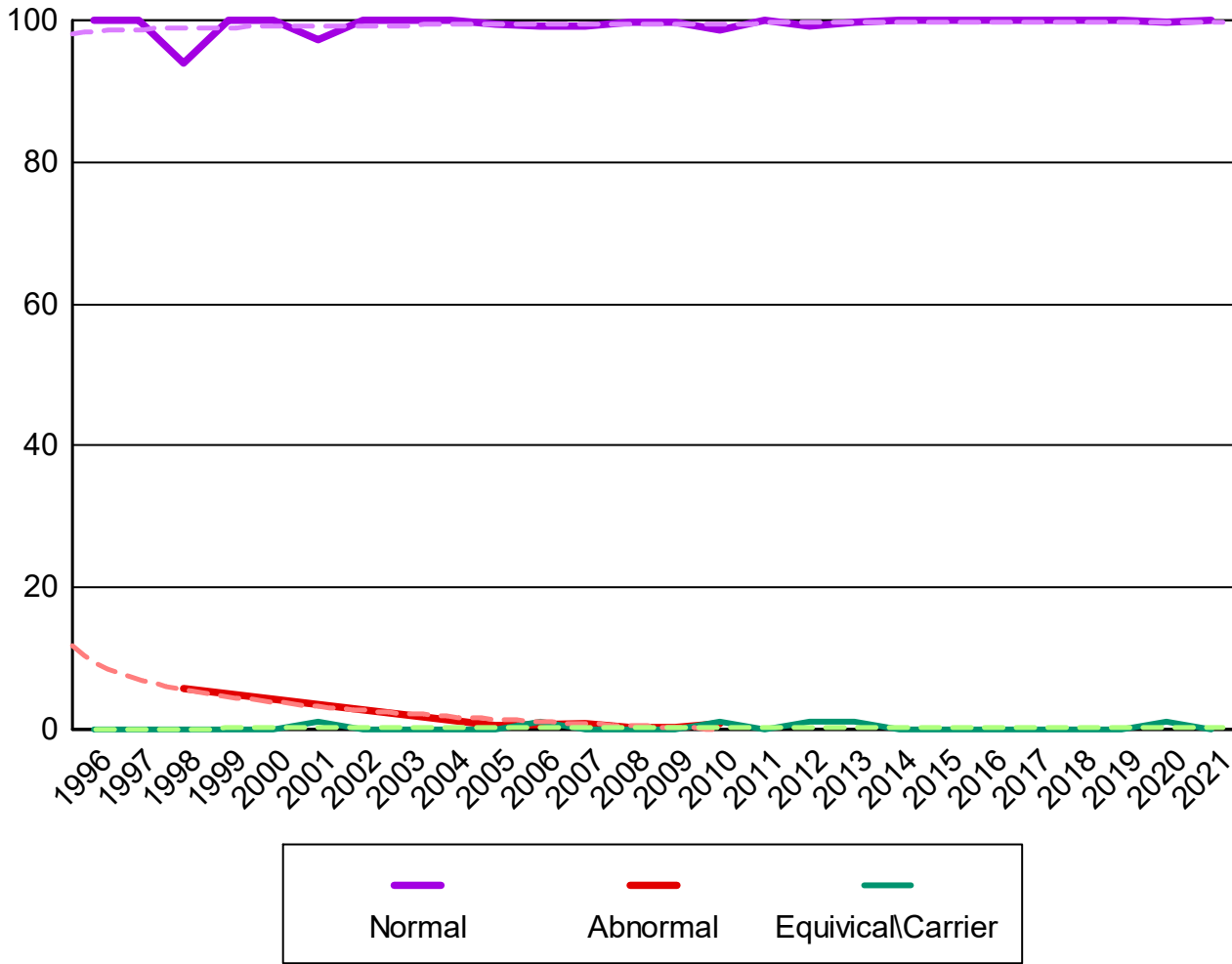
BERNESE MOUNTAIN DOG



BERNESE MOUNTAIN DOG

CONGENITAL CARDIAC

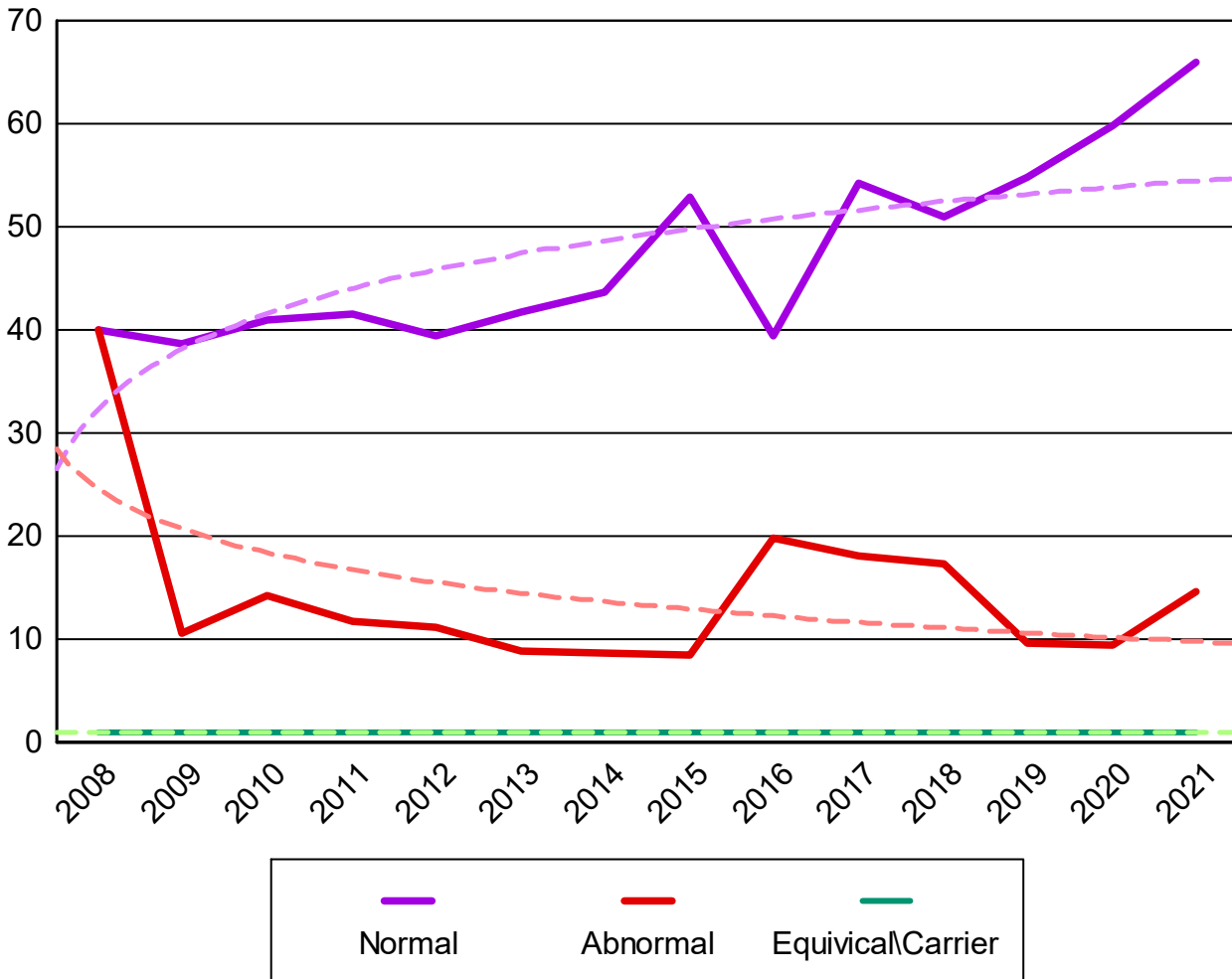
BERNESE MOUNTAIN DOG



BERNESE MOUNTAIN DOG

DEGENERATIVE MYELOPATHY

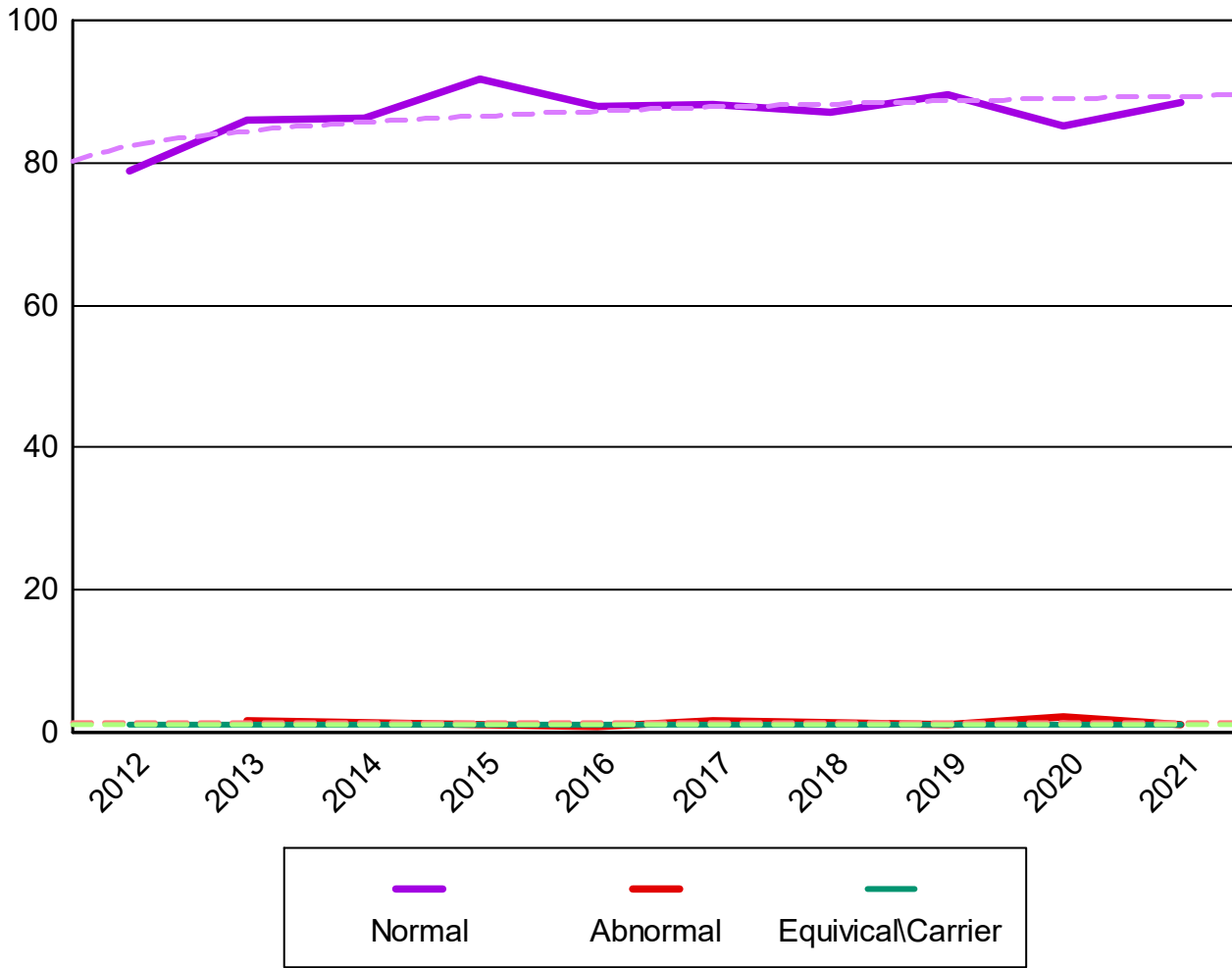
BERNESE MOUNTAIN DOG



BERNESE MOUNTAIN DOG

EYES

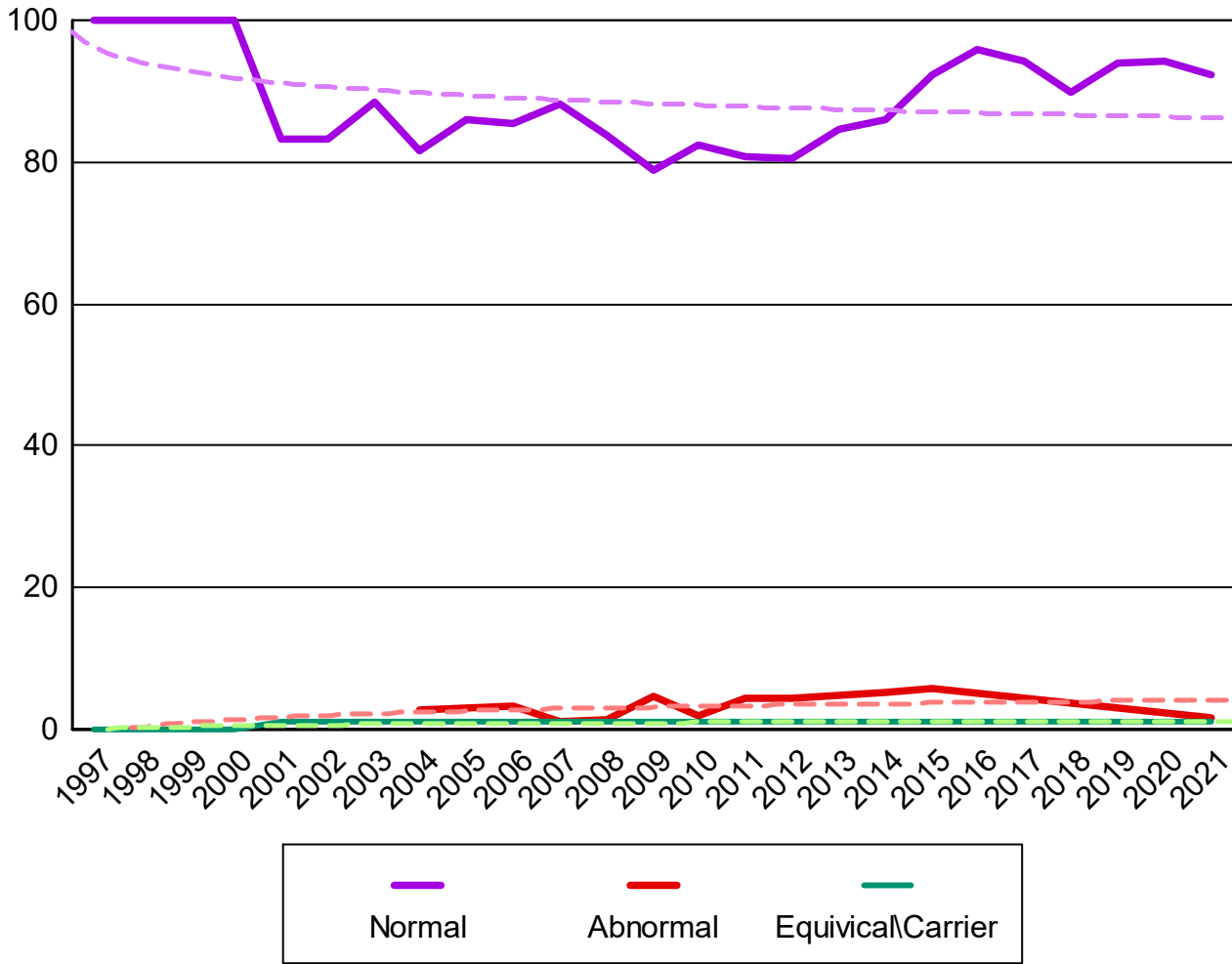
BERNESE MOUNTAIN DOG



BERNESE MOUNTAIN DOG

THYROID

BERNESE MOUNTAIN DOG



Percent submitted to the open registry
Hips

Report year	Cases	Excellent %	Good %	Fair %	Borderline %	Mild %	Moderate %	Severe %
1974	10	0	2 20.00%	1 10.00%	0	3 30.00%	4 40.00%	0
1975	18	2 11.11%	4 22.22%	4 22.22%	0	4 22.22%	3 16.67%	1 5.56%
1976	34	4 11.76%	15 44.12%	8 23.53%	0	2 5.88%	2 5.88%	3 8.82%
1977	39	2 5.13%	15 38.46%	9 23.08%	0	5 12.82%	8 20.51%	0
1978	60	3 5.00%	33 55.00%	12 20.00%	0	7 11.67%	4 6.67%	1 1.67%
1979	70	2 2.86%	38 54.29%	13 18.57%	1 1.43%	4 5.71%	10 14.29%	2 2.86%
1980	81	0	33 40.74%	18 22.22%	2 2.47%	13 16.05%	13 16.05%	2 2.47%
1981	85	1 1.18%	38 44.71%	13 15.29%	1 1.18%	12 14.12%	16 18.82%	4 4.71%
1982	90	0	45 50.00%	14 15.56%	1 1.11%	4 4.44%	23 25.56%	3 3.33%
1983	122	2 1.64%	55 45.08%	35 28.69%	1 0.82%	7 5.74%	21 17.21%	1 0.82%
1984	163	4 2.45%	77 47.24%	32 19.63%	3 1.84%	19 11.66%	25 15.34%	3 1.84%
1985	158	5 3.16%	76 48.10%	35 22.15%	0	18 11.39%	21 13.29%	3 1.90%
1986	186	10 5.35%	92 49.20%	36 19.25%	3 1.60%	24 12.83%	16 8.56%	5 2.67%
1987	218	11 5.05%	102 46.79%	49 22.48%	2 0.92%	30 13.76%	23 10.55%	1 0.46%
1988	293	17 5.80%	145 49.49%	58 19.80%	6 2.05%	31 10.58%	30 10.24%	6 2.05%
1989	307	21 6.84%	164 53.42%	51 16.61%	1 0.33%	45 14.66%	21 6.84%	4 1.30%
1990	354	20 5.65%	172 48.59%	88 24.86%	1 0.28%	43 12.15%	21 5.93%	9 2.54%
1991	329	32 9.73%	151 45.90%	63 19.15%	12 3.65%	48 14.59%	20 6.08%	3 0.91%
1992	397	25 6.30%	206 51.89%	95 23.93%	6 1.51%	37 9.32%	23 5.79%	5 1.26%
1993	409	29 7.09%	237 57.95%	80 19.56%	3 0.73%	36 8.80%	22 5.38%	2 0.49%
1994	503	50 9.92%	303 60.12%	76 15.08%	7 1.39%	40 7.94%	21 4.17%	6 1.19%
1995	483	68 14.05%	259 53.51%	83 17.15%	11 2.27%	35 7.23%	22 4.55%	5 1.03%

Percent submitted to the open registry

Hips

Report year	Cases	Excellent %	Good %	Fair %	Borderline %	Mild %	Moderate %	Severe %
1996	488	39 7.96%	287 58.57%	82 16.73%	9 1.84%	41 8.37%	26 5.31%	4 0.82%
1997	565	48 8.48%	311 54.95%	93 16.43%	13 2.30%	61 10.78%	39 6.89%	0
1998	613	58 9.46%	313 51.06%	116 18.92%	23 3.75%	68 11.09%	34 5.55%	1 0.16%
1999	588	90 15.28%	313 53.14%	82 13.92%	15 2.55%	53 9.00%	34 5.77%	1 0.17%
2000	577	106 18.34%	296 51.21%	82 14.19%	16 2.77%	46 7.96%	26 4.50%	5 0.87%
2001	581 15.66%	98 16.87%	324 55.77%	86 14.80%	10 1.72%	41 7.06%	19 3.27%	3 0.52%
2002	627 23.29%	85 13.56%	343 54.70%	106 16.91%	8 1.28%	53 8.45%	29 4.63%	3 0.48%
2003	683 19.59%	100 14.62%	410 59.94%	88 12.87%	14 2.05%	43 6.29%	25 3.65%	3 0.44%
2004	982 29.02%	161 16.40%	568 57.84%	119 12.12%	10 1.02%	87 8.86%	34 3.46%	3 0.31%
2005	905 32.38%	134 14.81%	535 59.12%	91 10.06%	16 1.77%	85 9.39%	39 4.31%	5 0.55%
2006	1,022 31.80%	136 13.31%	566 55.38%	144 14.09%	8 0.78%	108 10.57%	51 4.99%	9 0.88%
2007	903 36.28%	138 15.27%	498 55.09%	114 12.61%	12 1.33%	87 9.62%	44 4.87%	10 1.11%
2008	907 33.26%	191 21.04%	469 51.65%	114 12.56%	9 0.99%	87 9.58%	34 3.74%	3 0.33%
2009	938 33.87%	200 21.30%	493 52.50%	111 11.82%	9 0.96%	76 8.09%	44 4.69%	5 0.53%
2010	885 39.50%	198 22.35%	425 47.97%	100 11.29%	9 1.02%	109 12.30%	41 4.63%	3 0.34%
2011	857 35.94%	158 18.44%	476 55.54%	104 12.14%	12 1.40%	80 9.33%	22 2.57%	5 0.58%
2012	838 35.64%	148 17.64%	475 56.62%	90 10.73%	14 1.67%	72 8.58%	31 3.69%	8 0.95%
2013	796 31.91%	132 16.58%	470 59.05%	67 8.42%	10 1.26%	79 9.92%	32 4.02%	6 0.75%
2014	918 27.53%	168 18.28%	531 57.78%	77 8.38%	7 0.76%	98 10.66%	35 3.81%	2 0.22%
2015	948 34.77%	156 16.44%	555 58.48%	83 8.75%	8 0.84%	96 10.12%	46 4.85%	4 0.42%
2016	893 35.72%	143 16.01%	525 58.79%	69 7.73%	8 0.90%	97 10.86%	45 5.04%	6 0.67%
2017	996 31.22%	192 19.28%	548 55.02%	101 10.14%	10 1.00%	104 10.44%	35 3.51%	6 0.60%
2018	1,020 35.88%	200 19.61%	574 56.27%	85 8.33%	10 0.98%	112 10.98%	37 3.63%	2 0.20%

Percent submitted to the open registry
Hips

<i>Report year</i>	<i>Cases</i>	<i>Excellent</i> %	<i>Good</i> %	<i>Fair</i> %	<i>Borderline</i> %	<i>Mild</i> %	<i>Moderate</i> %	<i>Severe</i> %
2019	1,064	196	575	108	4	122	47	12
	33.83%	18.42%	54.04%	10.15%	0.38%	11.47%	4.42%	1.13%
2020	1,177	253	611	108	14	137	46	8
	29.03%	21.48%	51.87%	9.17%	1.19%	11.63%	3.90%	0.68%
2021	1,156	200	648	93	15	131	64	5
	29.13%	17.29%	56.01%	8.04%	1.30%	11.32%	5.53%	0.43%
Totals	26,336	4,036	14,401	3,386	354	2,640	1,328	191
		15.31%	54.64%	12.85%	1.34%	10.02%	5.04%	0.72%

Elbow

<i>Report Year</i>	<i>Cases</i>	<i>Normal</i> %	<i>Grade 1</i> %	<i>Grade 2</i> %	<i>Grade 3</i> %	<i>Borderline</i> %
1989	2	1 50.00%	1 50.00%			
1990	109	80 73.39%	16 14.68%	7 6.42%	6 5.50%	
1991	126	85 67.46%	28 22.22%	9 7.14%	4 3.17%	
1992	187	122 65.24%	42 22.46%	15 8.02%	6 3.21%	2 1.07%
1993	237	172 72.57%	42 17.72%	13 5.49%	9 3.80%	1 0.42%
1994	294	221 75.17%	35 11.90%	17 5.78%	17 5.78%	4 1.36%
1995	331	234 70.69%	55 16.62%	25 7.55%	14 4.23%	3 0.91%
1996	354	238 67.23%	70 19.77%	25 7.06%	18 5.08%	3 0.85%
1997	421	288 68.41%	77 18.29%	41 9.74%	13 3.09%	2 0.48%
1998	460	301 65.43%	84 18.26%	47 10.22%	21 4.57%	7 1.52%
1999	480	337 70.21%	90 18.75%	32 6.67%	19 3.96%	2 0.42%
2000	472	319 67.58%	93 19.70%	36 7.63%	22 4.66%	2 0.42%
2001	457	298 65.21%	106 23.19%	32 7.00%	18 3.94%	3 0.66%
2002	546	380 69.60%	112 20.51%	38 6.96%	13 2.38%	3 0.55%
2003	599	428 71.45%	121 20.20%	38 6.34%	11 1.84%	1 0.17%
2004	872	645 73.97%	145 16.63%	67 7.68%	14 1.61%	1 0.11%
2005	792	557 70.33%	143 18.06%	62 7.83%	28 3.54%	2 0.25%
2006	868	619 71.31%	190 21.89%	40 4.61%	19 2.19%	
2007	816	607 74.39%	144 17.65%	46 5.64%	17 2.08%	2 0.25%
2008	829	611 73.70%	156 18.82%	40 4.83%	18 2.17%	4 0.48%
2009	840	579 68.93%	176 20.95%	67 7.98%	14 1.67%	4 0.48%

Elbow

<i>Report Year</i>	<i>Cases</i>	<i>Normal</i> <i>%</i>	<i>Grade 1</i> <i>%</i>	<i>Grade 2</i> <i>%</i>	<i>Grade 3</i> <i>%</i>	<i>Borderline</i> <i>%</i>
2010	804	606 75.37%	115 14.30%	52 6.47%	26 3.23%	5 0.62%
2011	796	602 75.63%	136 17.09%	36 4.52%	20 2.51%	2 0.25%
2012	773	593 76.71%	105 13.58%	56 7.24%	15 1.94%	4 0.52%
2013	738	556 75.34%	127 17.21%	43 5.83%	11 1.49%	1 0.14%
2014	852	682 80.05%	107 12.56%	47 5.52%	16 1.88%	
2015	897	705 78.60%	134 14.94%	40 4.46%	17 1.90%	1 0.11%
2016	832	622 74.76%	138 16.59%	52 6.25%	19 2.28%	1 0.12%
2017	956	712 74.48%	172 17.99%	56 5.86%	14 1.46%	2 0.21%
2018	970	761 78.45%	157 16.19%	47 4.85%	3 0.31%	2 0.21%
2019	988	758 76.72%	161 16.30%	54 5.47%	12 1.21%	3 0.30%
2020	1,142	865 75.74%	201 17.60%	68 5.95%	6 0.53%	2 0.18%
2021	1,112	817 73.47%	215 19.33%	65 5.85%	9 0.81%	6 0.54%
Totals	20,952	15,401 73.51%	3,694 17.63%	1,313 6.27%	469 2.24%	75 0.36%

Advanced Cardiac

<i>Report year</i>	<i>Cases</i>	<i>Normal</i>	<i>% Normal</i>	<i>Abnormal</i>	<i>% Abnormal</i>	<i>Equivocal</i>	<i>% Equivocal</i>
Bernese Mountain Dog							
2016	117	115	98.3	1	0.9	1	0.9
2017	203	203	100.0				
2018	215	215	100.0				
2019	181	179	98.9	1	0.6	1	0.6
2020	99	98	99.0	1	1.0		
2021	80	76	95.0	3	3.8	1	1.3
Totals	895	886	99.0	6	0.7	3	0.3

Baer Hearing Test

<i>Report year</i>	<i>Cases</i>	<i>Normal</i>	<i>% Normal</i>	<i>Abnormal</i>	<i>% Abnormal</i>	<i>Equivocal</i>	<i>% Equivocal</i>
Bernese Mountain Dog							
2017	1	1	100.0				
Totals	1	1	100.0				

Chondrodysplasia (Cdpa)

<i>Report year</i>	<i>Cases</i>	<i>Normal</i>	<i>% Normal</i>	<i>Abnormal</i>	<i>% Abnormal</i>	<i>Carrier</i>	<i>% Carrier</i>
Bernese Mountain Dog							
2021	1	1	100.0				
Totals	1	1	100.0				

Chondrodystrophy (Cddy)

<i>Report year</i>	<i>Cases</i>	<i>Normal</i>	<i>% Normal</i>	<i>Abnormal</i>	<i>% Abnormal</i>	<i>Carrier</i>	<i>% Carrier</i>
Bernese Mountain Dog							
2021	1	1	100.0				
Totals	1	1	100.0				

Congenital Cardiac

<i>Report year</i>	<i>Cases</i>	<i>Normal</i>	<i>% Normal</i>	<i>Abnormal</i>	<i>% Abnormal</i>	<i>Equivocal</i>	<i>% Equivocal</i>
Bernese Mountain Dog							
1996	1	1	100.0				
1997	9	9	100.0				
1998	17	16	94.1	1	5.9		
1999	34	34	100.0				
2000	72	72	100.0				
2001	38	37	97.4			1	2.6
2002	122	122	100.0				
2003	114	114	100.0				
2004	197	197	100.0				
2005	173	172	99.4	1	0.6		
2006	244	242	99.2			2	0.8

Congenital Cardiac

<i>Report year</i>	<i>Cases</i>	<i>Normal</i>	<i>% Normal</i>	<i>Abnormal</i>	<i>% Abnormal</i>	<i>Equivocal</i>	<i>% Equivocal</i>
2007	337	334	99.1	3	0.9		
2008	375	374	99.7	1	0.3		
2009	322	321	99.7	1	0.3		
2010	408	402	98.5	3	0.7	3	0.7
2011	285	285	100.0				
2012	350	347	99.1			3	0.9
2013	395	394	99.8			1	0.3
2014	419	419	100.0				
2015	434	434	100.0				
2016	277	277	100.0				
2017	232	232	100.0				
2018	237	237	100.0				
2019	301	301	100.0				
2020	346	345	99.7			1	0.3
2021	10	10	100.0				
Totals	5749	5728	99.6	10	0.2	11	0.2

Degenerative Myelopathy

<i>Report year</i>	<i>Cases</i>	<i>Normal</i>	<i>% Normal</i>	<i>Abnormal</i>	<i>% Abnormal</i>	<i>Carrier</i>	<i>% Carrier</i>
Bernese Mountain Dog							
2008	5	2	40.0	2	40.0	1	20.0
2009	132	51	38.6	14	10.6	67	50.8
2010	417	171	41.0	59	14.2	187	44.8
2011	502	209	41.6	59	11.8	234	46.6
2012	757	298	39.4	84	11.1	375	49.5
2013	682	285	41.8	61	8.9	336	49.3
2014	464	203	43.8	40	8.6	221	47.6
2015	225	119	52.9	19	8.4	87	38.7
2016	76	30	39.5	15	19.7	31	40.8
2017	83	45	54.2	15	18.1	23	27.7
2018	104	53	51.0	18	17.3	33	31.7
2019	93	51	54.8	9	9.7	33	35.5
2020	117	70	59.8	11	9.4	36	30.8
2021	109	72	66.1	16	14.7	21	19.3
Totals	3766	1659	44.1	422	11.2	1685	44.7

Degenerative Myelopathy B

<i>Report year</i>	<i>Cases</i>	<i>Normal</i>	<i>% Normal</i>	<i>Abnormal</i>	<i>% Abnormal</i>	<i>Carrier</i>	<i>% Carrier</i>
Bernese Mountain Dog							
2014	1	1	100.0				
2015	75	65	86.7			10	13.3
2016	28	26	92.9			2	7.1
2017	37	36	97.3			1	2.7
2018	48	43	89.6			5	10.4
2019	43	42	97.7			1	2.3
2020	37	34	91.9			3	8.1
2021	54	53	98.2			1	1.9

Degenerative Myelopathy B

Report year	Cases	Normal	% Normal	Abnormal	% Abnormal	Carrier	% Carrier
Totals	323	300	92.9			23	7.1

Dentition Database

Report year	Cases	Normal	% Normal	Abnormal	% Abnormal	Carrier	% Carrier
Bernese Mountain Dog							
2012	17	17	100.0				
2013	5	4	80.0	1	20.0		
2014	3	2	66.7	1	33.3		
2015	9	9	100.0				
2016	15	15	100.0				
2017	19	19	100.0				
2018	25	24	96.0	1	4.0		
2019	35	33	94.3	2	5.7		
2020	16	16	100.0				
2021	23	23	100.0				
Totals	167	162	97.0	5	3.0		

Exercise Induced Collapse

Report year	Cases	Normal	% Normal	Abnormal	% Abnormal	Carrier	% Carrier
Bernese Mountain Dog							
2010	1	1	100.0				
Totals	1	1	100.0				

Eyes

Report year	Cases	Normal	% Normal	Abnormal	% Abnormal	Breeder opt.	% Breeder opt.
Bernese Mountain Dog							
2012	19	15	79.0			4	21.1
2013	298	256	85.9	5	1.7	37	12.4
2014	417	360	86.3	6	1.4	51	12.2
2015	513	471	91.8	6	1.2	36	7.0
2016	483	425	88.0	4	0.8	54	11.2
2017	465	410	88.2	7	1.5	48	10.3
2018	407	355	87.2	6	1.5	46	11.3
2019	542	485	89.5	6	1.1	51	9.4
2020	375	320	85.3	8	2.1	47	12.5
2021	437	387	88.6	5	1.1	45	10.3
Totals	3956	3484	88.1	53	1.3	419	10.6

Histiocytic Sarcoma Pre-Test Sh

Report year	Cases	Normal	% Normal	Abnormal	% Abnormal	Carrier	% Carrier
Bernese Mountain Dog							

Histiocytic Sarcoma Pre-Test Sh

<i>Report year</i>	<i>Cases</i>	<i>Normal</i>	<i>% Normal</i>	<i>Abnormal</i>	<i>% Abnormal</i>	<i>Carrier</i>	<i>% Carrier</i>
2018	18	18	100.0				
2019	8	8	100.0				
2020	6	6	100.0				
2021	12	12	100.0				
Totals	44	44	100.0				

Legg-Calve-Perthes

<i>Report year</i>	<i>Cases</i>	<i>Normal</i>	<i>% Normal</i>	<i>Abnormal</i>	<i>% Abnormal</i>	<i>Carrier</i>	<i>% Carrier</i>
Bernese Mountain Dog							
2017	2	2	100.0				
2018	6	6	100.0				
2019	21	21	100.0				
2020	15	15	100.0				
2021	3	3	100.0				
Totals	47	47	100.0				

Patella

<i>Report year</i>	<i>Cases</i>	<i>Normal</i>	<i>% Normal</i>	<i>Abnormal</i>	<i>% Abnormal</i>	<i>Equivocal</i>	<i>% Equivocal</i>
Bernese Mountain Dog							
1994	1	1	100.0				
1995	1	1	100.0				
1996	10	9	90.0	1	10.0		
1997	4	4	100.0				
1999	1	1	100.0				
2000	3	3	100.0				
2001	1	1	100.0				
2002	1	1	100.0				
2004	4	3	75.0	1	25.0		
2005	1	1	100.0				
2006	5	5	100.0				
2007	3	3	100.0				
2008	16	16	100.0				
2009	12	12	100.0				
2010	20	20	100.0				
2011	15	15	100.0				
2012	15	15	100.0				
2013	14	14	100.0				
2014	19	19	100.0				
2015	37	36	97.3	1	2.7		
2016	73	73	100.0				
2017	70	70	100.0				
2018	62	62	100.0				
2019	111	111	100.0				
2020	163	163	100.0				
2021	139	139	100.0				
Totals	801	798	99.6	3	0.4		

Shoulder

<i>Report year</i>	<i>Cases</i>	<i>Normal</i>	<i>% Normal</i>	<i>Abnormal</i>	<i>% Abnormal</i>		
Bernese Mountain Dog							
1996	1	1	100.0				
1997	1			1	100.0		
2005	64	63	98.4			1	1.6
2006	21	21	100.0				
2007	25	25	100.0				
2008	41	40	97.6	1	2.4		
2009	33	32	97.0	1	3.0		
2010	31	31	100.0				
2011	24	23	95.8	1	4.2		
2012	19	19	100.0				
2013	26	25	96.2	1	3.9		
2014	14	14	100.0				
2015	51	49	96.1	2	3.9		
2016	46	46	100.0				
2017	34	33	97.1	1	2.9		
2018	39	39	100.0				
2019	37	37	100.0				
2020	49	47	95.9	2	4.1		
2021	49	47	95.9	2	4.1		
Totals	605	592	97.9	12	2.0	1	0.2

Thyroid

<i>Report year</i>	<i>Cases</i>	<i>Normal</i>	<i>% Normal</i>	<i>Abnormal</i>	<i>% Abnormal</i>	<i>Equivocal</i>	<i>% Equivocal</i>
Bernese Mountain Dog							
1997	4	4	100.0				
1998	11	11	100.0				
1999	6	6	100.0				
2000	5	5	100.0				
2001	6	5	83.3			1	16.7
2002	18	15	83.3			3	16.7
2003	26	23	88.5			3	11.5
2004	38	31	81.6	1	2.6	6	15.8
2005	36	31	86.1			5	13.9
2006	62	53	85.5	2	3.2	7	11.3
2007	84	74	88.1	1	1.2	9	10.7
2008	81	68	84.0	1	1.2	12	14.8
2009	66	52	78.8	3	4.6	11	16.7
2010	51	42	82.4	1	2.0	8	15.7
2011	47	38	80.9	2	4.3	7	14.9
2012	46	37	80.4	2	4.4	7	15.2
2013	52	44	84.6			8	15.4
2014	57	49	86.0	3	5.3	5	8.8
2015	53	49	92.5	3	5.7	1	1.9
2016	50	48	96.0			2	4.0
2017	35	33	94.3			2	5.7
2018	40	36	90.0			4	10.0
2019	68	64	94.1			4	5.9
2020	52	49	94.2			3	5.8
2021	65	60	92.3	1	1.5	4	6.2
Totals	1059	927	87.5	20	1.9	112	10.6

Von Willebrands

<i>Report year</i>	<i>Cases</i>	<i>Normal</i>	<i>% Normal</i>	<i>Abnormal</i>	<i>% Abnormal</i>	<i>Carrier</i>	<i>% Carrier</i>
Bernese Mountain Dog							
2001	23	23	100.0				
2002	23	22	95.7			1	4.4
2003	31	30	96.8			1	3.2
2004	17	16	94.1			1	5.9
2005	111	109	98.2			2	1.8
2006	51	49	96.1			2	3.9
2007	52	50	96.2			2	3.9
2008	64	63	98.4			1	1.6
2009	92	88	95.7			4	4.4
2010	95	94	99.0			1	1.1
2011	87	86	98.9			1	1.2
2012	134	134	100.0				
2013	127	126	99.2			1	0.8
2014	139	136	97.8			3	2.2
2015	128	126	98.4			2	1.6
2016	52	52	100.0				
2017	72	72	100.0				
2018	46	45	97.8			1	2.2
2019	45	45	100.0				
2020	46	46	100.0				
2021	57	56	98.3			1	1.8
Totals	1492	1468	98.4			24	1.6
