

**Dalmatian**

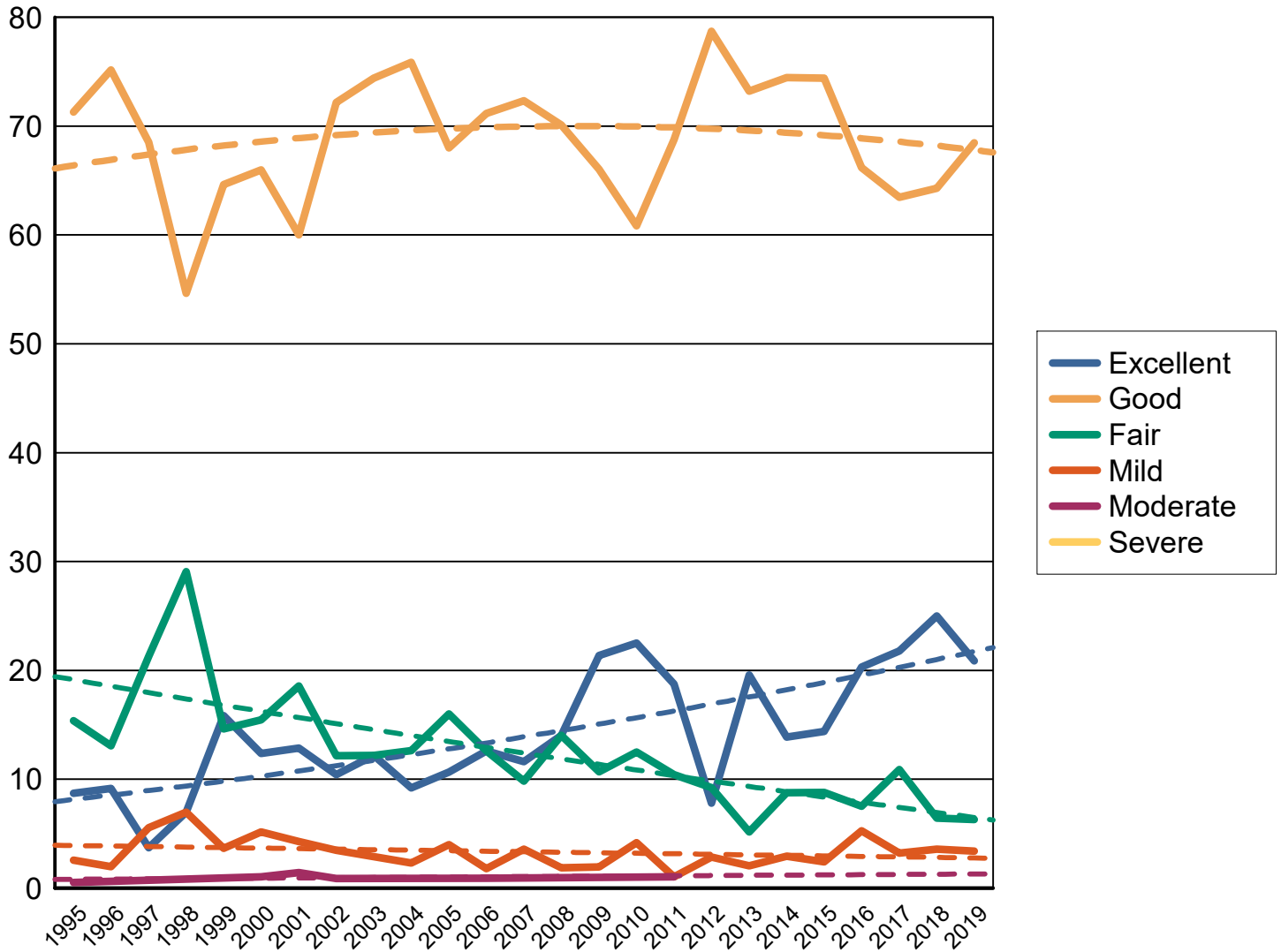
All data as of 12-31-2019

*Dysplastic rank, all breeds with more than 100 cases*

		<i>Normals</i>		<i>Equival or Carrier</i>		<i>Abnormal</i>	
Hips	168 of 194	4319	95.70%	2	0.04%	192	4.25%
Elbow	130 of 136	784	99.37%	0		5	0.63%
Cardiac		268	95.04%	8	2.84%	6	2.13%
Thyroid		1206	73.40%	244	14.85%	193	11.75%
Hyperuricosuria		44	7.86%	326	58.21%	190	33.93%
Baer Hearing Test		6866	88.09%	16	0.21%	912	11.70%
Chondrodysplasia (Cdpa)		2	100.00%	0		0	
Gdc Baer Hearing		303	86.57%	0		47	13.43%
OFA EYE Registry		1047	99.62%	0		4	0.38%
Shoulder		3	100.00%	0		0	
Patella		58	100.00%	0		0	
Von Willebrands		1	100.00%	0		0	
Cone Degeneration		1	100.00%	0		0	
Chondrodystrophy (Cddy)		2	100.00%	0		0	
Legg-Calve-Perthes		1	100.00%	0		0	
Dentition Database		92	88.46%	0		12	11.54%
Ovc Hips		3	100.00%	0		0	
Int'L Hip Registry		4	100.00%	0		0	
Degenerative Myelopathy		139	97.89%	1	0.70%	2	1.41%
Advanced Cardiac		54	88.52%	6	9.84%	1	1.64%

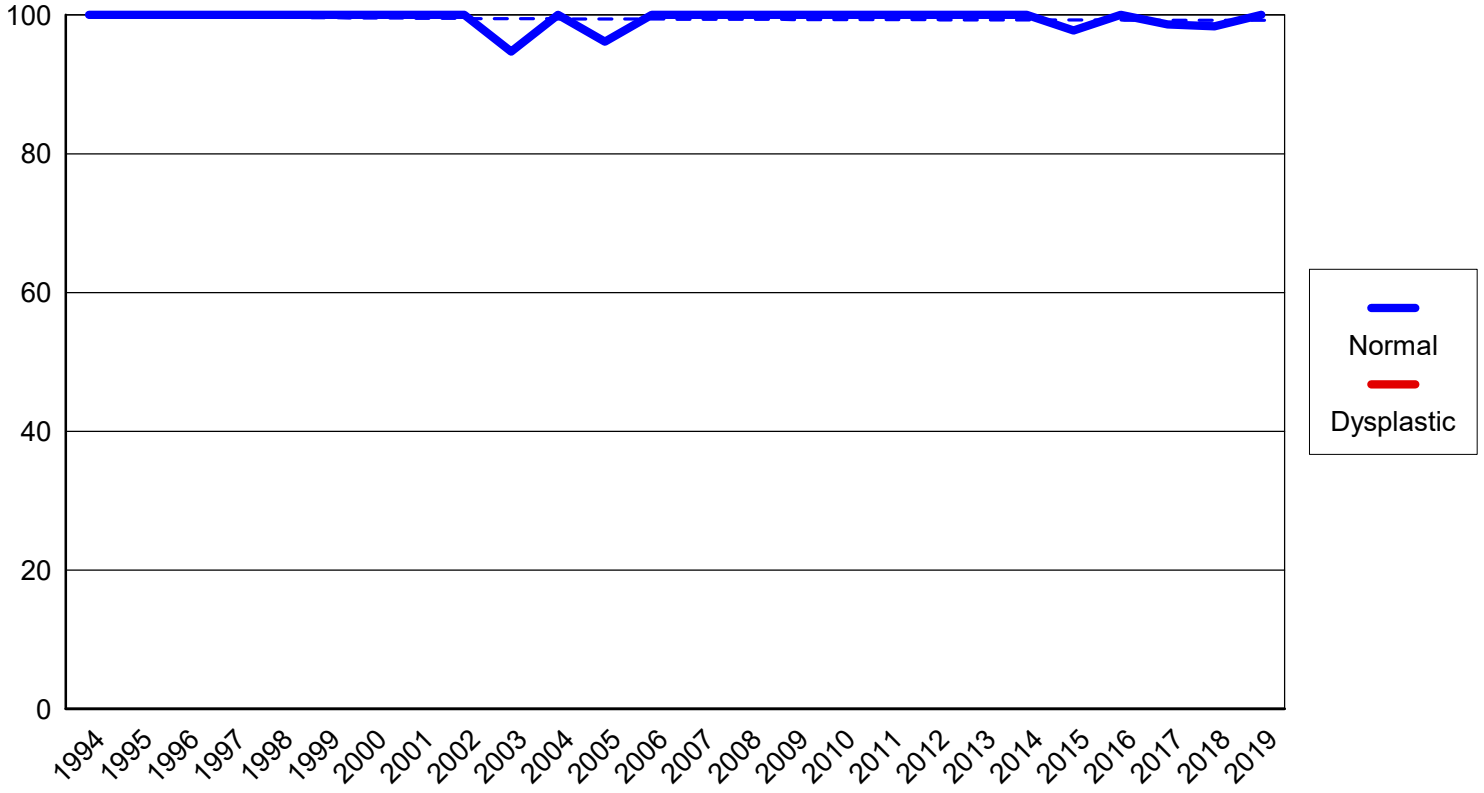
DALMATIAN

Hip percentages by rating with trendlines



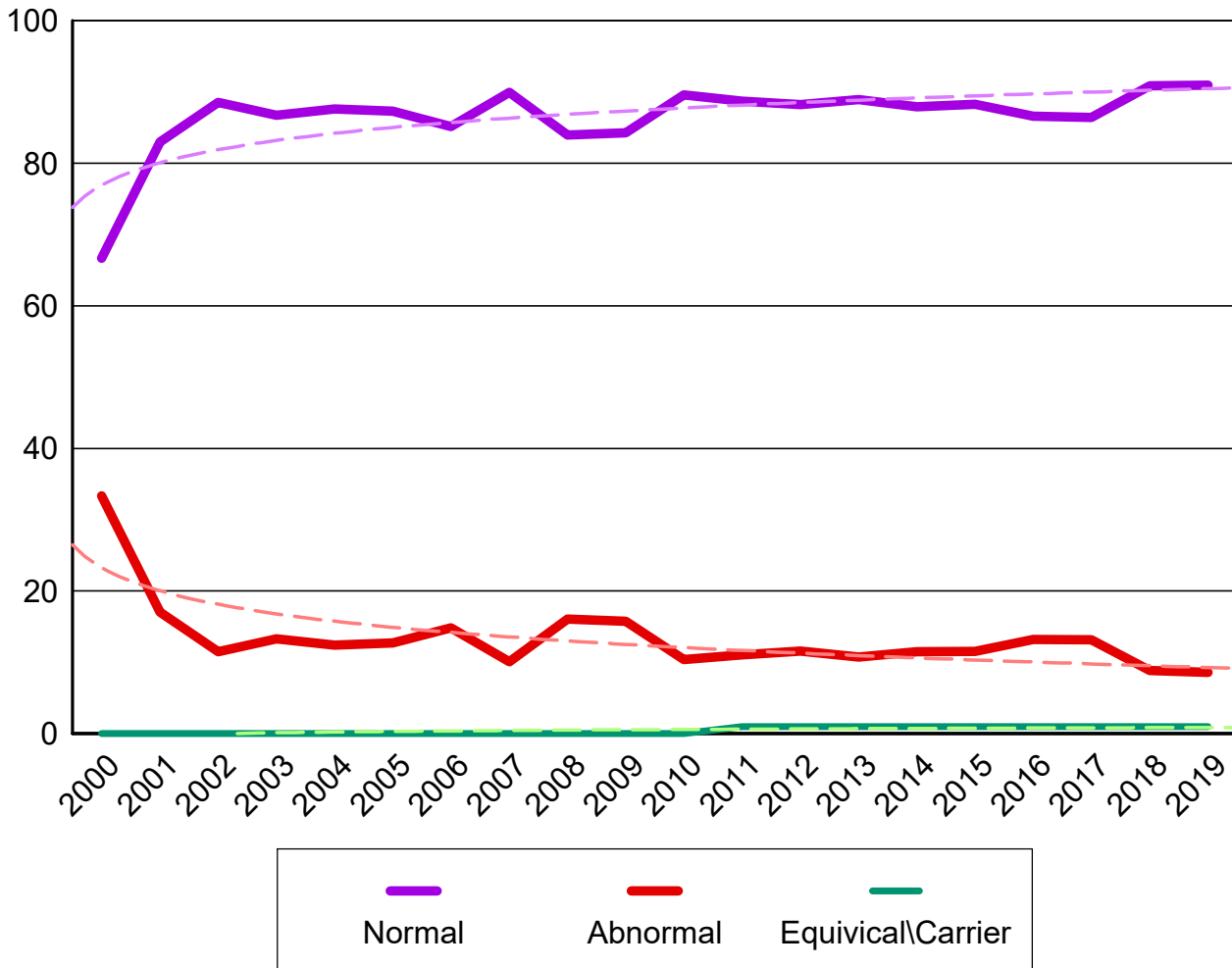
DALMATIAN

Elbow percentages by rating with trendlines



BAER HEARING TEST

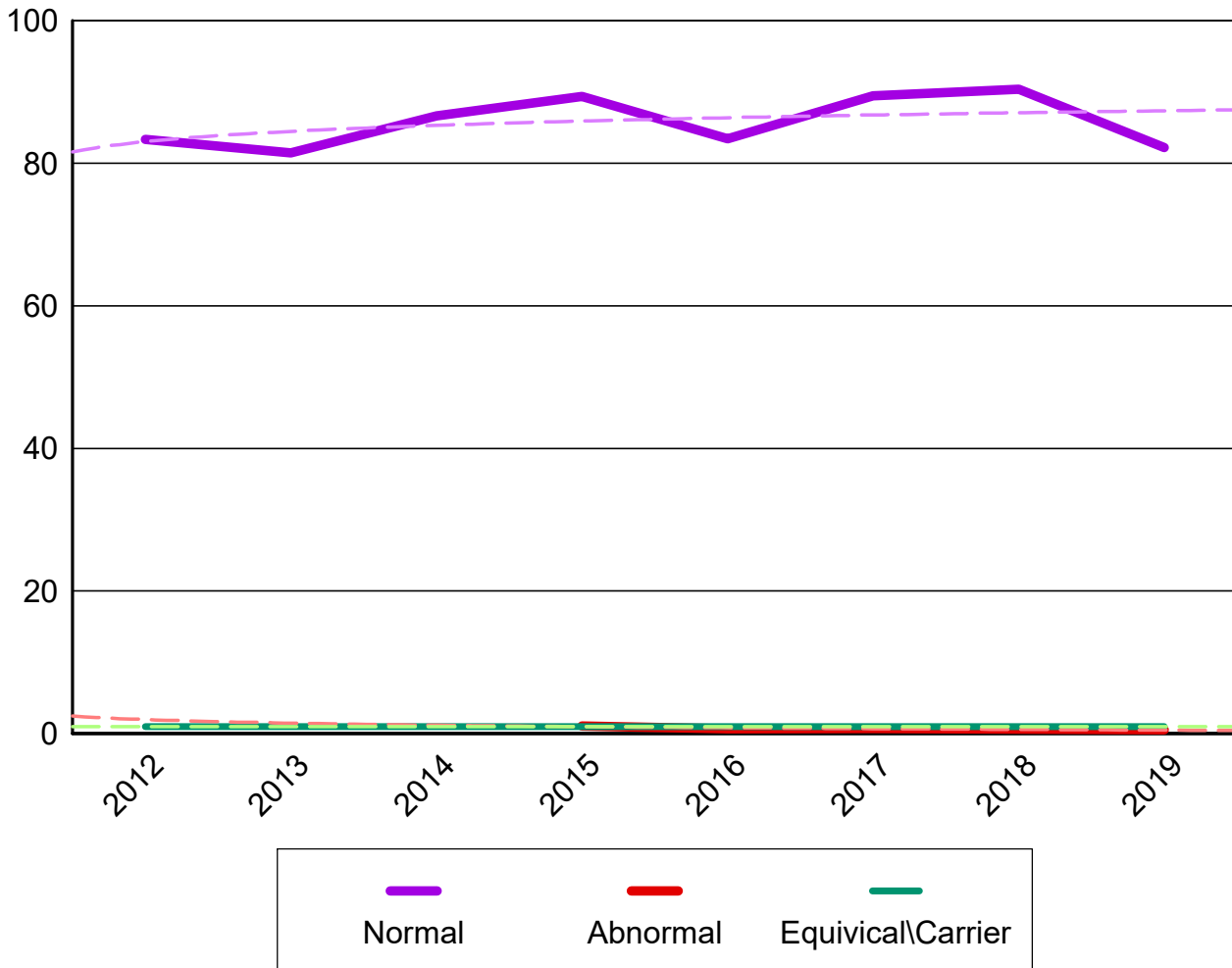
DALMATIAN



DALMATIAN

EYES

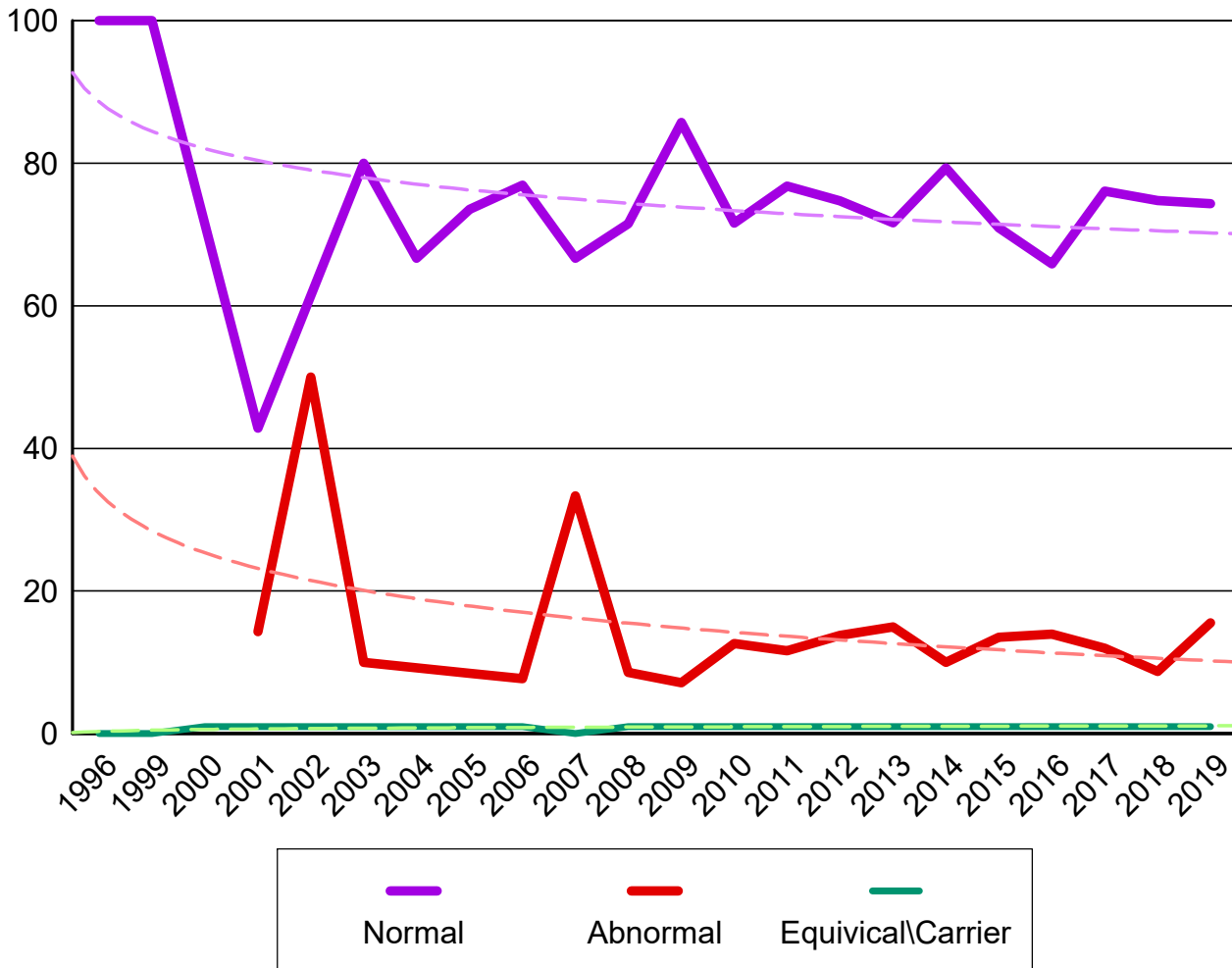
DALMATIAN



DALMATIAN

THYROID

DALMATIAN



**Percent submitted to the open registry**

**Hips**

<i>Report year</i>	<i>Cases</i>	<i>Excellent</i> %	<i>Good</i> %	<i>Fair</i> %	<i>Borderline</i> %	<i>Mild</i> %	<i>Moderate</i> %	<i>Severe</i> %
1974	32	4 12.50%	25 78.13%	3 9.38%	0	0	0	0
1975	47	6 12.77%	26 55.32%	10 21.28%	0	4 8.51%	1 2.13%	0
1976	44	9 20.45%	28 63.64%	6 13.64%	0	1 2.27%	0	0
1977	52	7 13.46%	34 65.38%	7 13.46%	0	3 5.77%	1 1.92%	0
1978	43	4 9.30%	26 60.47%	8 18.60%	0	5 11.63%	0	0
1979	46	1 2.17%	36 78.26%	5 10.87%	0	4 8.70%	0	0
1980	50	4 8.00%	35 70.00%	9 18.00%	0	2 4.00%	0	0
1981	60	4 6.67%	39 65.00%	10 16.67%	0	7 11.67%	0	0
1982	49	5 10.20%	35 71.43%	8 16.33%	0	1 2.04%	0	0
1983	29	2 6.90%	22 75.86%	3 10.34%	0	2 6.90%	0	0
1984	47	2 4.26%	28 59.57%	16 34.04%	0	0	1 2.13%	0
1985	70	6 8.57%	48 68.57%	14 20.00%	1 1.43%	1 1.43%	0	0
1986	97	6 6.19%	63 64.95%	13 13.40%	2 2.06%	8 8.25%	5 5.15%	0
1987	75	6 8.00%	48 64.00%	18 24.00%	1 1.33%	1 1.33%	1 1.33%	0
1988	88	7 7.95%	66 75.00%	12 13.64%	0	3 3.41%	0	0
1989	83	9 10.84%	46 55.42%	19 22.89%	1 1.20%	7 8.43%	1 1.20%	0
1990	90	5 5.56%	56 62.22%	25 27.78%	0	2 2.22%	2 2.22%	0
1991	102	7 6.86%	65 63.73%	21 20.59%	0	6 5.88%	3 2.94%	0
1992	149	10 6.71%	96 64.43%	35 23.49%	0	6 4.03%	2 1.34%	0
1993	173	11 6.36%	124 71.68%	29 16.76%	3 1.73%	3 1.73%	3 1.73%	0
1994	185	16 8.65%	131 70.81%	29 15.68%	2 1.08%	6 3.24%	1 0.54%	0
1995	195	17 8.72%	139 71.28%	30 15.38%	3 1.54%	5 2.56%	1 0.51%	0

**Percent submitted to the open registry**

**Hips**

Report year	Cases	Excellent %	Good %	Fair %	Borderline %	Mild %	Moderate %	Severe %
1996	153	14 9.15%	115 75.16%	20 13.07%	1 0.65%	3 1.96%	0	0
1997	108	4 3.70%	74 68.52%	23 21.30%	1 0.93%	6 5.56%	0	0
1998	86	6 6.98%	47 54.65%	25 29.07%	2 2.33%	6 6.98%	0	0
1999	82	13 15.85%	53 64.63%	12 14.63%	1 1.22%	3 3.66%	0	0
2000	97	12 12.37%	64 65.98%	15 15.46%	0	5 5.15%	1 1.03%	0
2001	70	9 12.86%	42 60.00%	13 18.57%	2 2.86%	3 4.29%	1 1.43%	0
2002	115	12 10.43%	83 72.17%	14 12.17%	1 0.87%	4 3.48%	1 0.87%	0
2003	81	10 12.20%	61 74.39%	10 12.20%	0	0	0	0
2004	87	8 9.20%	66 75.86%	11 12.64%	0	2 2.30%	0	0
2005	75	8 10.67%	51 68.00%	12 16.00%	1 1.33%	3 4.00%	0	0
2006	111	14 12.61%	79 71.17%	14 12.61%	1 0.90%	2 1.80%	1 0.90%	0
2007	112	13 11.61%	81 72.32%	11 9.82%	3 2.68%	4 3.57%	0	0
2008	107	15 14.02%	75 70.09%	15 14.02%	0	2 1.87%	0	0
2009	103	22 21.36%	68 66.02%	11 10.68%	0	2 1.94%	0	0
2010	120	27 22.50%	73 60.83%	15 12.50%	0	5 4.17%	0	0
2011	96	18 18.75%	66 68.75%	10 10.42%	0	1 1.04%	1 1.04%	0
2012	141	11 7.80%	111 78.72%	13 9.22%	2 1.42%	4 2.84%	0	0
2013	97	19 19.59%	71 73.20%	5 5.15%	0	2 2.06%	0	0
2014	137	19 13.87%	102 74.45%	12 8.76%	0	4 2.92%	0	0
2015	125	18 14.40%	93 74.40%	11 8.80%	0	3 2.40%	0	0
2016	133	27 20.30%	88 66.17%	10 7.52%	1 0.75%	7 5.26%	0	0
2017	155	34 21.79%	99 63.46%	17 10.90%	0	5 3.21%	0	0
2018	140	35 25.00%	90 64.29%	9 6.43%	1 0.71%	5 3.57%	0	0



**Percent submitted to the open registry**

**Hips**

<i>Report year</i>	<i>Cases</i>	<i>Excellent</i> %	<i>Good</i> %	<i>Fair</i> %	<i>Borderline</i> %	<i>Mild</i> %	<i>Moderate</i> %	<i>Severe</i> %
2019	206	43	141	13	2	7	0	0
	<b>35.44%</b>	20.87%	68.45%	6.31%	0.97%	3.40%		
<b>Totals</b>	<b>4,543</b>	<b>559</b>	<b>3,109</b>	<b>651</b>	<b>32</b>	<b>165</b>	<b>27</b>	<b>0</b>
		<b>12.30%</b>	<b>68.40%</b>	<b>14.32%</b>	<b>0.70%</b>	<b>3.63%</b>	<b>0.59%</b>	

**Elbow**

<i>Report Year</i>	<i>Cases</i>	<i>Normal %</i>	<i>Grade 1 %</i>	<i>Grade 2 %</i>	<i>Grade 3 %</i>	<i>Borderline %</i>
1991	3	3 100.00%				
1992	4	4 100.00%				
1993	7	7 100.00%				
1994	3	3 100.00%				
1995	6	6 100.00%				
1996	11	11 100.00%				
1997	4	4 100.00%				
1998	4	4 100.00%				
1999	9	9 100.00%				
2000	8	8 100.00%				
2001	7	7 100.00%				
2002	24	24 100.00%				
2003	19	18 94.74%	1 5.26%			
2004	20	20 100.00%				
2005	26	25 96.15%	1 3.85%			
2006	25	25 100.00%				
2007	26	26 100.00%				
2008	30	30 100.00%				
2009	25	25 100.00%				
2010	34	34 100.00%				
2011	29	29 100.00%				

**Elbow**

<i>Report Year</i>	<i>Cases</i>	<i>Normal %</i>	<i>Grade 1 %</i>	<i>Grade 2 %</i>	<i>Grade 3 %</i>	<i>Borderline %</i>
2012	45	45 100.00%				
2013	35	35 100.00%				
2014	62	62 100.00%				
2015	45	44 97.78%	1 2.22%			
2016	53	53 100.00%				
2017	72	71 98.61%	1 1.39%			
2018	61	60 98.36%	1 1.64%			
2019	92	92 100.00%				
<b>Totals</b>	<b>789</b>	<b>784</b> <b>99.37%</b>	<b>5</b> <b>0.63%</b>			

### Advanced Cardiac

<i>Report year</i>	<i>Cases</i>	<i>Normal</i>	<i>% Normal</i>	<i>Abnormal</i>	<i>% Abnormal</i>	<i>Carrier</i>	<i>% Carrier</i>
<b>Dalmatian</b>							
2016	5	5	100.0				
2017	29	22	75.9	1	3.5	6	20.7
2018	15	15	100.0				
2019	12	12	100.0				
<b>Totals</b>	<b>61</b>	<b>54</b>	<b>88.5</b>	<b>1</b>	<b>1.6</b>	<b>6</b>	<b>9.8</b>

### Baer Hearing Test

<i>Report year</i>	<i>Cases</i>	<i>Normal</i>	<i>% Normal</i>	<i>Abnormal</i>	<i>% Abnormal</i>	<i>Equivocal</i>	<i>% Equivocal</i>
<b>Dalmatian</b>							
2000	18	12	66.7	6	33.3		
2001	47	39	83.0	8	17.0		
2002	61	54	88.5	7	11.5		
2003	98	85	86.7	13	13.3		
2004	226	198	87.6	28	12.4		
2005	307	268	87.3	39	12.7		
2006	283	241	85.2	42	14.8		
2007	546	491	89.9	55	10.1		
2008	299	251	84.0	48	16.1		
2009	419	353	84.3	66	15.8		
2010	558	500	89.6	58	10.4		
2011	408	362	88.7	45	11.0	1	0.3
2012	544	480	88.2	63	11.6	1	0.2
2013	577	513	88.9	62	10.8	2	0.4
2014	505	444	87.9	58	11.5	3	0.6
2015	546	482	88.3	63	11.5	1	0.2
2016	515	446	86.6	68	13.2	1	0.2
2017	509	440	86.4	67	13.2	2	0.4
2018	677	615	90.8	60	8.9	2	0.3
2019	651	592	90.9	56	8.6	3	0.5
<b>Totals</b>	<b>7794</b>	<b>6866</b>	<b>88.1</b>	<b>912</b>	<b>11.7</b>	<b>16</b>	<b>0.2</b>

### Cardiac

<i>Report year</i>	<i>Cases</i>	<i>Normal</i>	<i>% Normal</i>	<i>Abnormal</i>	<i>% Abnormal</i>	<i>Equivocal</i>	<i>% Equivocal</i>
<b>Dalmatian</b>							
2001	1	1	100.0				
2002	1	1	100.0				
2003	6	6	100.0				
2005	2	2	100.0				
2006	4	4	100.0				
2007	3	3	100.0				
2008	2	2	100.0				
2009	23	23	100.0				
2010	5	5	100.0				
2011	39	38	97.4	1	2.6		
2012	17	17	100.0				
2013	41	34	82.9	3	7.3	4	9.8

### Cardiac

<i>Report year</i>	<i>Cases</i>	<i>Normal</i>	<i>% Normal</i>	<i>Abnormal</i>	<i>% Abnormal</i>	<i>Equivocal</i>	<i>% Equivocal</i>
2014	54	50	92.6	2	3.7	2	3.7
2015	17	17	100.0				
2016	31	30	96.8			1	3.2
2017	7	7	100.0				
2018	9	9	100.0				
2019	20	19	95.0			1	5.0
<b>Totals</b>	<b>282</b>	<b>268</b>	<b>95.0</b>	<b>6</b>	<b>2.1</b>	<b>8</b>	<b>2.8</b>

### Chondrodysplasia (Cdpa)

<i>Report year</i>	<i>Cases</i>	<i>Normal</i>	<i>% Normal</i>	<i>Abnormal</i>	<i>% Abnormal</i>	<i>Carrier</i>	<i>% Carrier</i>
<b>Dalmatian</b>							
2018	2	2	100.0				
<b>Totals</b>	<b>2</b>	<b>2</b>	<b>100.0</b>				

### Chondrodystrophy (Cddy)

<i>Report year</i>	<i>Cases</i>	<i>Normal</i>	<i>% Normal</i>	<i>Abnormal</i>	<i>% Abnormal</i>	<i>Carrier</i>	<i>% Carrier</i>
<b>Dalmatian</b>							
2018	2	2	100.0				
<b>Totals</b>	<b>2</b>	<b>2</b>	<b>100.0</b>				

### Cone Degeneration

<i>Report year</i>	<i>Cases</i>	<i>Normal</i>	<i>% Normal</i>	<i>Abnormal</i>	<i>% Abnormal</i>	<i>Carrier</i>	<i>% Carrier</i>
<b>Dalmatian</b>							
2018	1	1	100.0				
<b>Totals</b>	<b>1</b>	<b>1</b>	<b>100.0</b>				

### Degenerative Myelopathy

<i>Report year</i>	<i>Cases</i>	<i>Normal</i>	<i>% Normal</i>	<i>Abnormal</i>	<i>% Abnormal</i>	<i>Carrier</i>	<i>% Carrier</i>
<b>Dalmatian</b>							
2009	4	4	100.0				
2010	2	2	100.0				
2011	5	5	100.0				
2012	35	34	97.1	1	2.9		
2013	23	22	95.7	1	4.4		
2014	19	19	100.0				
2015	13	13	100.0				
2016	11	10	90.9			1	9.1
2017	8	8	100.0				
2018	9	9	100.0				
2019	13	13	100.0				
<b>Totals</b>	<b>142</b>	<b>139</b>	<b>97.9</b>	<b>2</b>	<b>1.4</b>	<b>1</b>	<b>0.7</b>

---

**Dentition Database**

---

<i>Report year</i>	<i>Cases</i>	<i>Normal</i>	<i>% Normal</i>	<i>Abnormal</i>	<i>% Abnormal</i>	<i>Carrier</i>	<i>% Carrier</i>
<b>Dalmatian</b>							
2011	1	1	100.0				
2012	24	19	79.2	5	20.8		
2013	12	9	75.0	3	25.0		
2014	9	9	100.0				
2015	5	5	100.0				
2016	15	14	93.3	1	6.7		
2017	8	8	100.0				
2018	18	17	94.4	1	5.6		
2019	12	10	83.3	2	16.7		
<b>Totals</b>	<b>104</b>	<b>92</b>	<b>88.5</b>	<b>12</b>	<b>11.5</b>		

---

---

**Eyes**

---

<i>Report year</i>	<i>Cases</i>	<i>Normal</i>	<i>% Normal</i>	<i>Abnormal</i>	<i>% Abnormal</i>	<i>Breeder opt.</i>	<i>% Breeder opt.</i>
<b>Dalmatian</b>							
2012	6	5	83.3			1	16.7
2013	124	101	81.5			23	18.6
2014	172	149	86.6			23	13.4
2015	94	84	89.4	1	1.1	9	9.6
2016	145	121	83.5	1	0.7	23	15.9
2017	142	127	89.4	1	0.7	14	9.9
2018	177	160	90.4			17	9.6
2019	191	157	82.2	1	0.5	33	17.3
<b>Totals</b>	<b>1051</b>	<b>904</b>	<b>86.0</b>	<b>4</b>	<b>0.4</b>	<b>143</b>	<b>13.6</b>

---

---

**Hyperuricosuria**

---

<i>Report year</i>	<i>Cases</i>	<i>Normal</i>	<i>% Normal</i>	<i>Abnormal</i>	<i>% Abnormal</i>	<i>Carrier</i>	<i>% Carrier</i>
<b>Dalmatian</b>							
2009	71			36	50.7	35	49.3
2010	33	1	3.0	13	39.4	19	57.6
2011	60	4	6.7	18	30.0	38	63.3
2012	47	1	2.1	19	40.4	27	57.5
2013	15	1	6.7	5	33.3	9	60.0
2014	56	9	16.1	15	26.8	32	57.1
2015	65	13	20.0	19	29.2	33	50.8
2016	33	4	12.1	8	24.2	21	63.6
2017	50	3	6.0	17	34.0	30	60.0
2018	53	3	5.7	18	34.0	32	60.4
2019	77	5	6.5	22	28.6	50	64.9
<b>Totals</b>	<b>560</b>	<b>44</b>	<b>7.9</b>	<b>190</b>	<b>33.9</b>	<b>326</b>	<b>58.2</b>

---

---

**Legg-Calve-Perthes**

---

<i>Report year</i>	<i>Cases</i>	<i>Normal</i>	<i>% Normal</i>	<i>Abnormal</i>	<i>% Abnormal</i>	<i>Carrier</i>	<i>% Carrier</i>
--------------------	--------------	---------------	-----------------	-----------------	-------------------	----------------	------------------

---

### Legg-Calve-Perthes

<i>Report year</i>	<i>Cases</i>	<i>Normal</i>	<i>% Normal</i>	<i>Abnormal</i>	<i>% Abnormal</i>	<i>Carrier</i>	<i>% Carrier</i>
<b>Dalmatian</b>							
2019	1	1	100.0				
<b>Totals</b>	<b>1</b>	<b>1</b>	<b>100.0</b>				

### Patella

<i>Report year</i>	<i>Cases</i>	<i>Normal</i>	<i>% Normal</i>	<i>Abnormal</i>	<i>% Abnormal</i>	<i>Carrier</i>	<i>% Carrier</i>
<b>Dalmatian</b>							
1994	1	1	100.0				
1998	2	2	100.0				
2006	1	1	100.0				
2007	1	1	100.0				
2009	10	10	100.0				
2010	4	4	100.0				
2011	2	2	100.0				
2012	7	7	100.0				
2014	3	3	100.0				
2015	1	1	100.0				
2016	2	2	100.0				
2017	6	6	100.0				
2018	7	7	100.0				
2019	11	11	100.0				
<b>Totals</b>	<b>58</b>	<b>58</b>	<b>100.0</b>				

### Shoulder

<i>Report year</i>	<i>Cases</i>	<i>Normal</i>	<i>% Normal</i>	<i>Abnormal</i>	<i>% Abnormal</i>
<b>Dalmatian</b>					
2007	1	1	100.0		
2019	2	2	100.0		
<b>Totals</b>	<b>3</b>	<b>3</b>	<b>100.0</b>		

### Thyroid

<i>Report year</i>	<i>Cases</i>	<i>Normal</i>	<i>% Normal</i>	<i>Abnormal</i>	<i>% Abnormal</i>	<i>Equivocal</i>	<i>% Equivocal</i>
<b>Dalmatian</b>							
1996	1	1	100.0				
1999	1	1	100.0				
2000	1					1	100.0
2001	7	3	42.9	1	14.3	3	42.9
2002	2			1	50.0	1	50.0
2003	10	8	80.0	1	10.0	1	10.0
2004	6	4	66.7			2	33.3
2005	189	139	73.5	16	8.5	34	18.0
2006	13	10	76.9	1	7.7	2	15.4
2007	6	4	66.7	2	33.3		
2008	151	108	71.5	13	8.6	30	19.9

### Thyroid

<i>Report year</i>	<i>Cases</i>	<i>Normal</i>	<i>% Normal</i>	<i>Abnormal</i>	<i>% Abnormal</i>	<i>Equivocal</i>	<i>% Equivocal</i>
2009	28	24	85.7	2	7.1	2	7.1
2010	95	68	71.6	12	12.6	15	15.8
2011	112	86	76.8	13	11.6	13	11.6
2012	87	65	74.7	12	13.8	10	11.5
2013	127	91	71.7	19	15.0	17	13.4
2014	150	119	79.3	15	10.0	16	10.7
2015	148	105	71.0	20	13.5	23	15.5
2016	129	85	65.9	18	14.0	26	20.2
2017	117	89	76.1	14	12.0	14	12.0
2018	115	86	74.8	10	8.7	19	16.5
2019	148	110	74.3	23	15.5	15	10.1
<b>Totals</b>	<b>1643</b>	<b>1206</b>	<b>73.4</b>	<b>193</b>	<b>11.8</b>	<b>244</b>	<b>14.9</b>

### Von Willebrands

<i>Report year</i>	<i>Cases</i>	<i>Normal</i>	<i>% Normal</i>	<i>Abnormal</i>	<i>% Abnormal</i>	<i>Carrier</i>	<i>% Carrier</i>
<b>Dalmatian</b>							
2018	1	1	100.0				
<b>Totals</b>	<b>1</b>	<b>1</b>	<b>100.0</b>				