

German Shepherd Dog

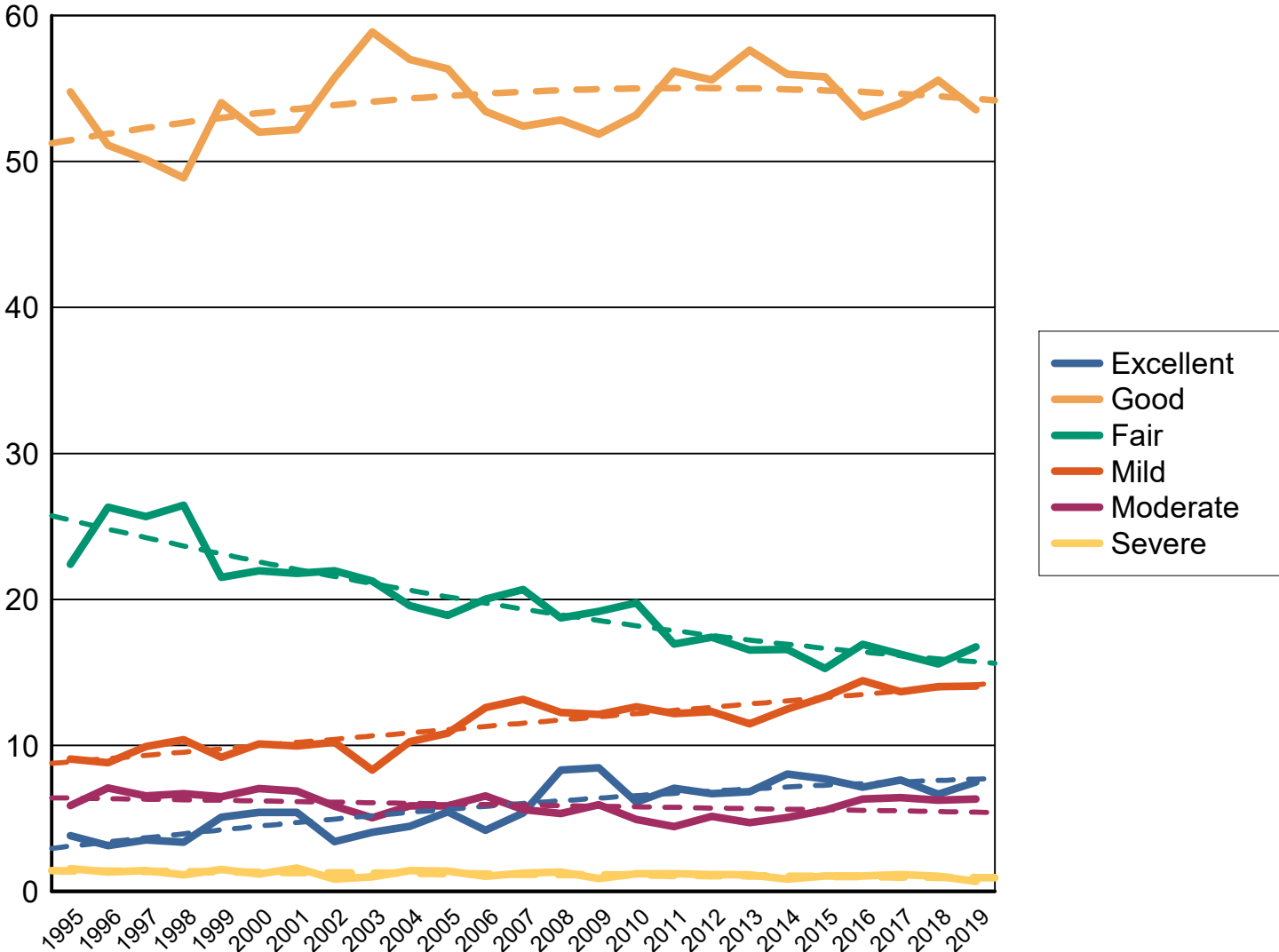
All data as of 12-31-2020

*Dysplastic rank, all
breeds with more
than 100 cases*

		<i>Normals</i>		<i>Equivocal or Carrier</i>		<i>Abnormal</i>	
Hips	40 of 191	101667	78.93%	2249	1.75%	24886	19.32%
Elbow	20 of 135	44259	81.84%	85	0.16%	9738	18.01%
Congenital Cardiac		2302	99.61%	8	0.35%	1	0.04%
Thyroid		1006	91.70%	62	5.65%	29	2.64%
Hemophilia B		3	100.00%	0		0	
Agouti		1	100.00%	0		0	
D Locus		1	100.00%	0		0	
Mucopolysaccharidosis (Mps) Iiia		1	100.00%	0		0	
Advanced Cardiac		187	98.42%	2	1.05%	1	0.53%
Dentition Database		669	97.66%	0		16	2.34%
Spine		24	1.21%	0		1961	98.79%
Int'L Elbow Registry		14	87.50%	0		2	12.50%
Dilated Cardiomyopathy		3	100.00%	0		0	
Mizzou Biomarker Study		13	100.00%	0		0	
Primary Lens Luxation		1	100.00%	0		0	
Cone Degeneration		7	100.00%	0		0	
Kidney		1	100.00%	0		0	
Canine Leukocyte Adhesion Def.		18	100.00%	0		0	
Von Willebrands Cornell Blood Assa		3	100.00%	0		0	
Shoulder		146	97.33%	0		4	2.67%
Degenerative Myelopathy (Dm) Flast		10	100.00%	0		0	
Ectodermal Dysplasia		8	100.00%	0		0	
Int'L Hip Registry		16	100.00%	0		0	
Cleft Lip/Palate Syndactyly		2	100.00%	0		0	
Degenerative Myelopathy		7168	55.63%	3898	30.25%	1818	14.11%

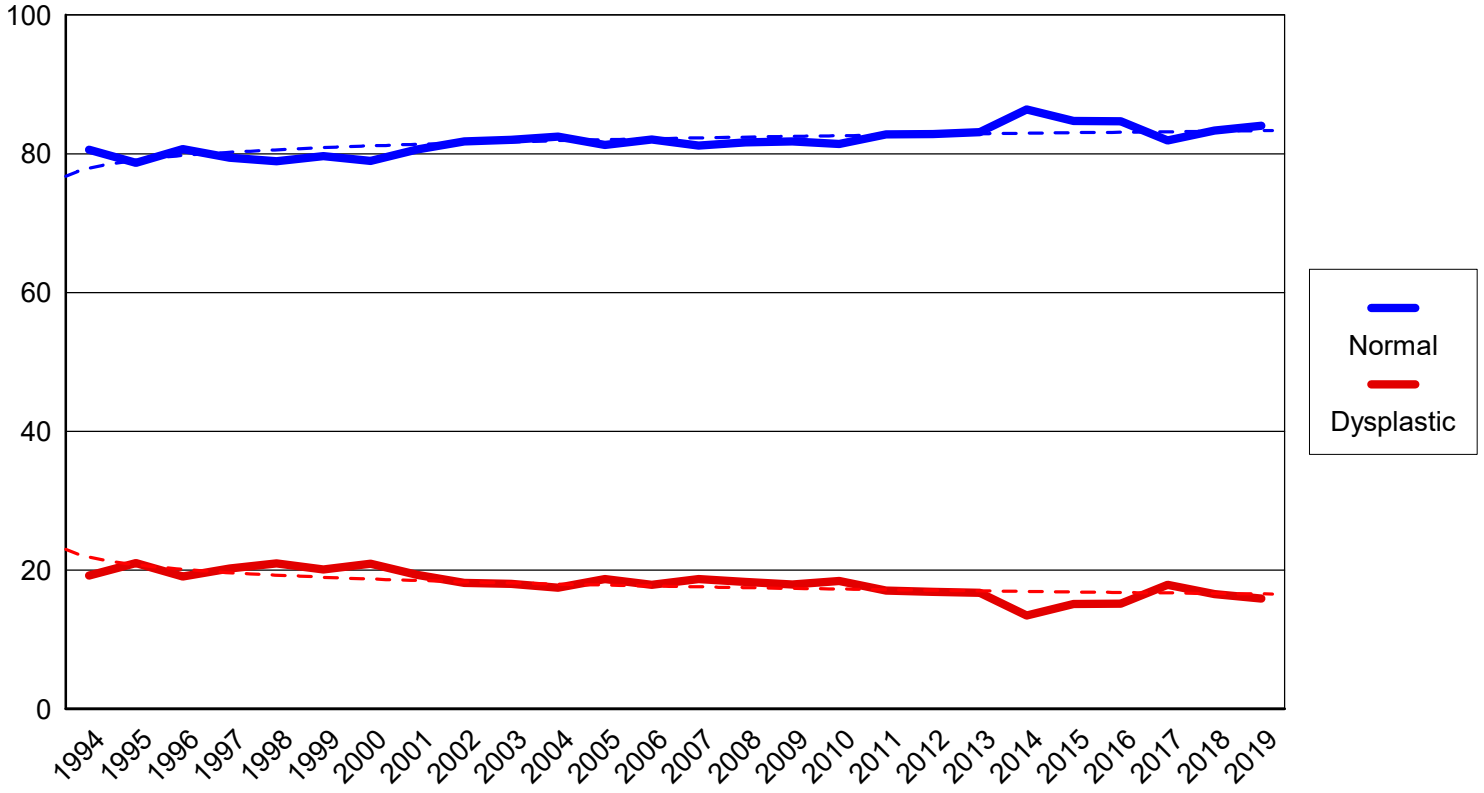
Pituitary Dwarfism	16	100.00%	0	0	
Hemophilia A	76	100.00%	0	0	
Patella	853	98.96%	0	9	1.04%
Hyperuricosuria	106	100.00%	0	0	
Achromatopsia Day Blindness	2	100.00%	0	0	
Von Willebrands	17	100.00%	0	0	
Ovc Hips	3	100.00%	0	0	
Multiple Drug Resistance (Mdr1)	158	100.00%	0	0	
Canine Multifocal Retinopathy	1	100.00%	0	0	
Baer Hearing Test	20	100.00%	0	0	
Adult Onset Neuropathy	3	100.00%	0	0	
Basic Cardiac	51	100.00%	0	0	
Gsdca Temperament Test	1464	100.00%	0	0	
Legg-Calve-Perthes	89	100.00%	0	0	
Leukocyte Adhesion Deficiency	58	100.00%	0	0	
Cataracts	1	100.00%	0	0	
Ovc Elbows	4	100.00%	0	0	
Mucopolysaccharidosis (Mps) Vii	83	100.00%	0	0	
OFA EYE Registry	847	98.49%	0	13	1.51%
Fanconi Syndrome	1	100.00%	0	0	
Ichthyosis	1	100.00%	0	0	

Hip percentages by rating with trendlines



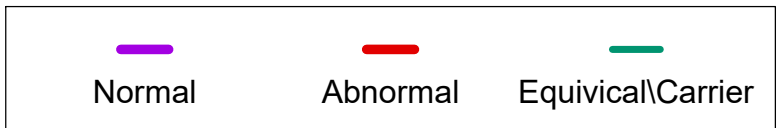
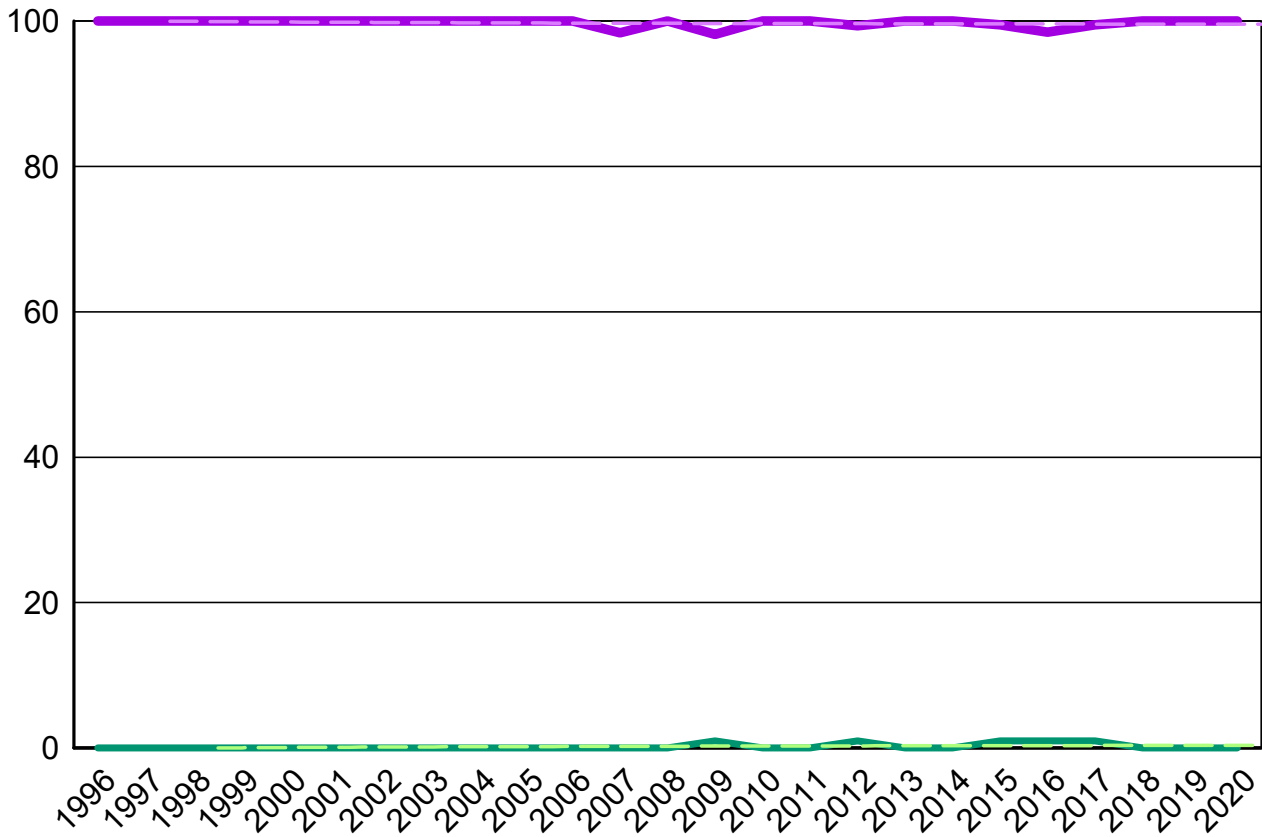
GERMAN SHEPHERD DOG

Elbow percentages by rating with trendlines



CONGENITAL CARDIAC

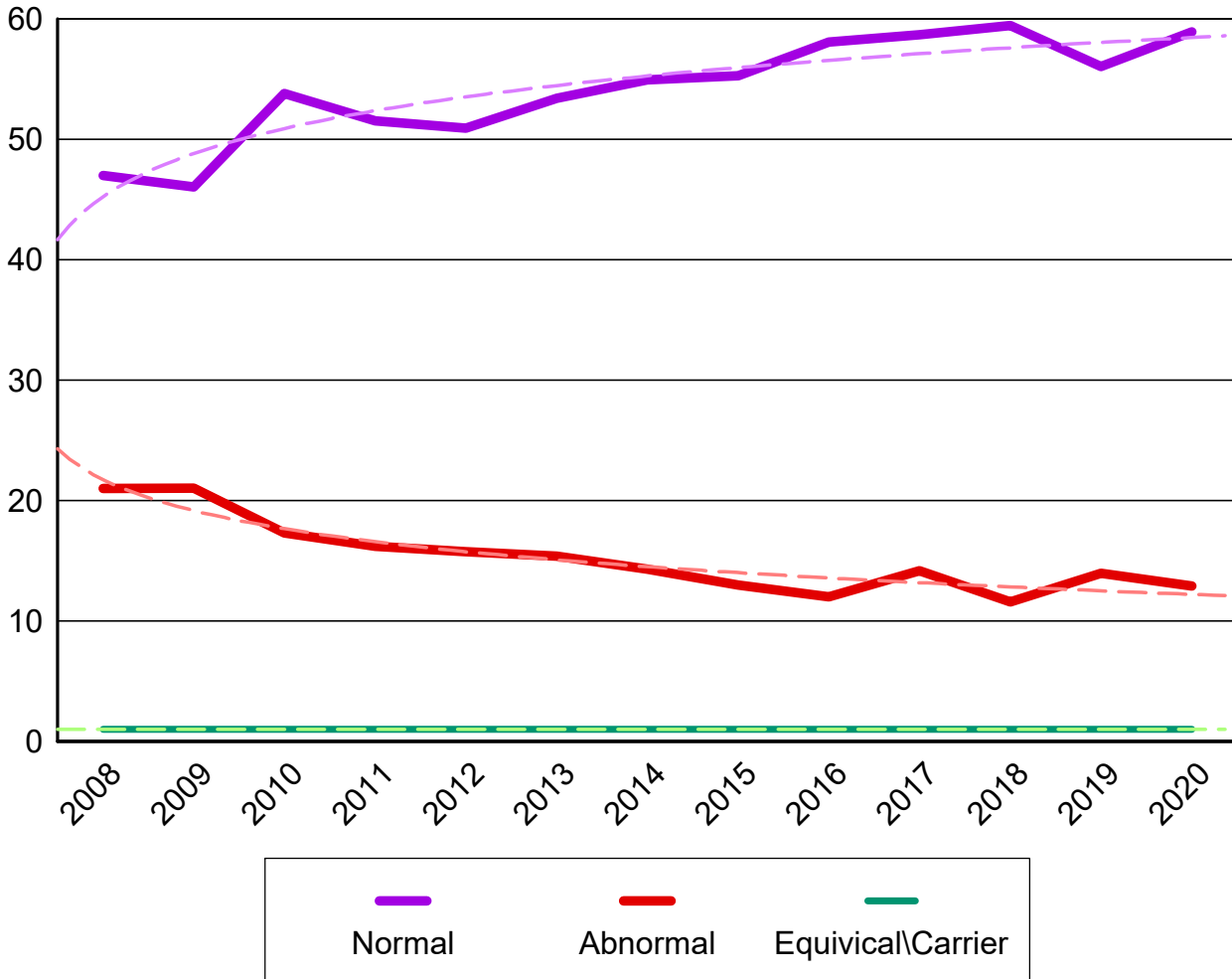
GERMAN SHEPHERD DOG



GERMAN SHEPHERD DOG

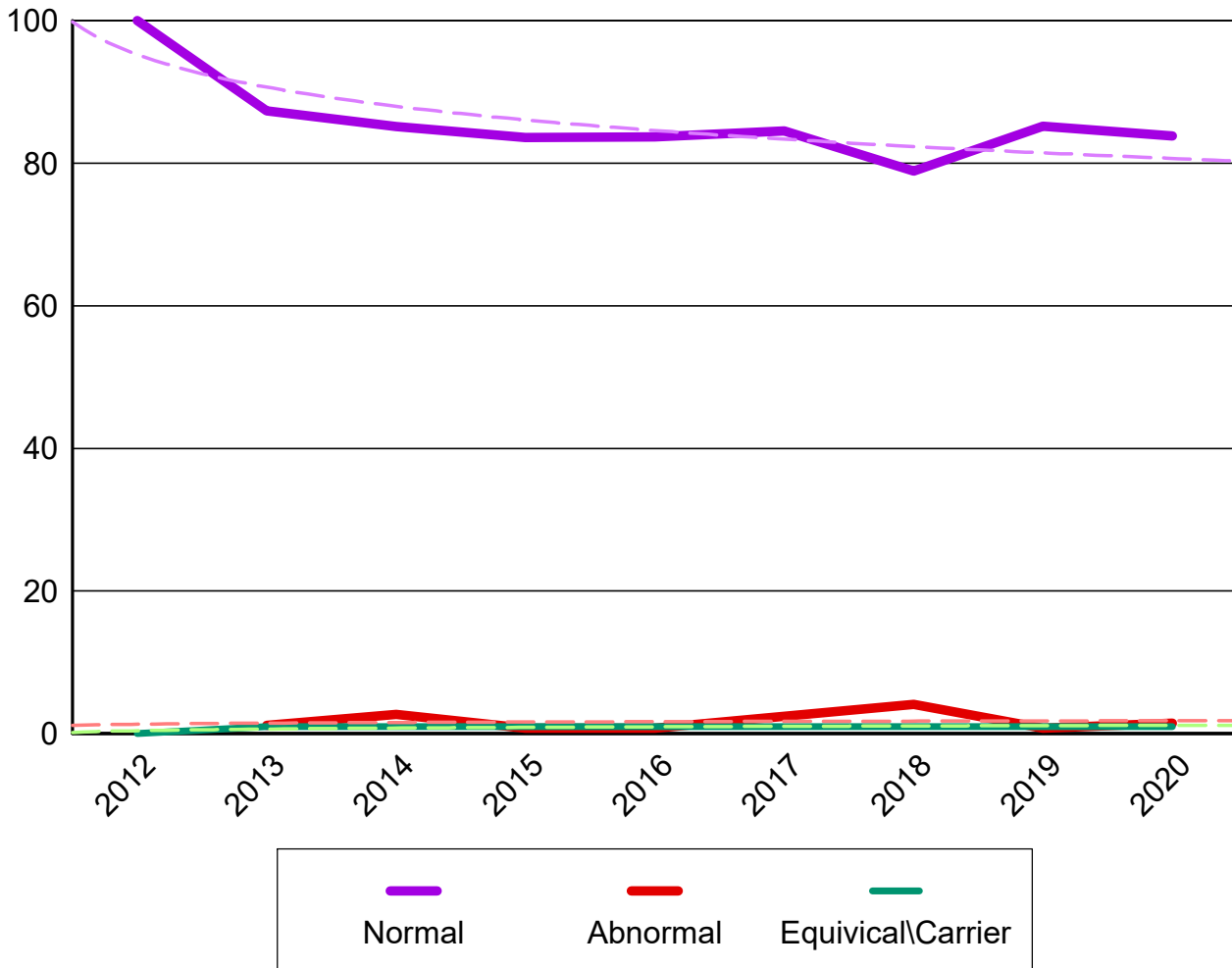
DEGENERATIVE MYELOPATHY

GERMAN SHEPHERD DOG

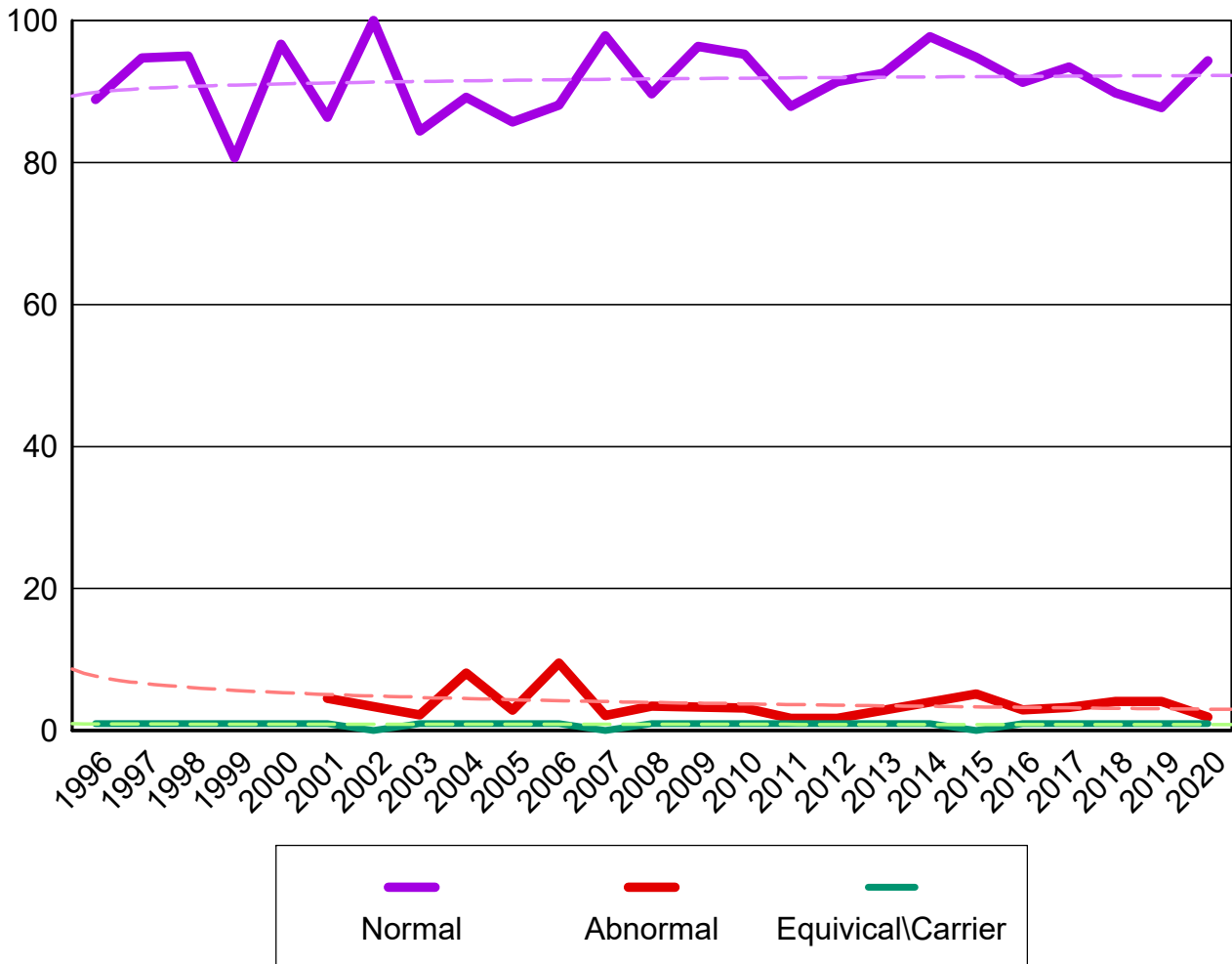


GERMAN SHEPHERD DOG

EYES



THYROID



Percent submitted to the open registry
Hips

Report year	Cases	Excellent %	Good %	Fair %	Borderline %	Mild %	Moderate %	Severe %
1974	592	16 2.70%	286 48.31%	154 26.01%	0	76 12.84%	44 7.43%	16 2.70%
1975	917	40 4.36%	505 55.07%	184 20.07%	0	106 11.56%	62 6.76%	20 2.18%
1976	1,048	35 3.34%	584 55.73%	228 21.76%	5 0.48%	107 10.21%	73 6.97%	16 1.53%
1977	1,027	46 4.48%	563 54.82%	208 20.25%	1 0.10%	103 10.03%	90 8.76%	16 1.56%
1978	1,069	23 2.15%	574 53.70%	246 23.01%	8 0.75%	123 11.51%	77 7.20%	18 1.68%
1979	1,159	29 2.50%	615 53.06%	263 22.69%	16 1.38%	128 11.04%	83 7.16%	25 2.16%
1980	1,304	31 2.38%	676 51.84%	283 21.70%	34 2.61%	116 8.90%	135 10.35%	29 2.22%
1981	1,468	34 2.32%	783 53.34%	307 20.91%	41 2.79%	123 8.38%	147 10.01%	33 2.25%
1982	1,538	20 1.30%	832 54.10%	320 20.81%	41 2.67%	142 9.23%	156 10.14%	27 1.76%
1983	1,670	19 1.14%	891 53.35%	421 25.21%	49 2.93%	138 8.26%	129 7.72%	23 1.38%
1984	2,054	21 1.02%	1,042 50.63%	540 26.24%	36 1.75%	198 9.62%	173 8.41%	44 2.14%
1985	2,037	39 1.91%	976 47.82%	568 27.83%	25 1.22%	232 11.37%	160 7.84%	37 1.81%
1986	2,210	40 1.80%	1,038 46.82%	599 27.02%	29 1.31%	259 11.68%	194 8.75%	51 2.30%
1987	2,513	51 2.02%	1,188 47.16%	653 25.92%	35 1.39%	297 11.79%	227 9.01%	62 2.46%
1988	2,810	87 3.09%	1,313 46.63%	708 25.14%	40 1.42%	348 12.36%	257 9.13%	57 2.02%
1989	3,020	109 3.60%	1,449 47.87%	757 25.01%	51 1.68%	344 11.36%	251 8.29%	59 1.95%
1990	3,323	70 2.10%	1,483 44.51%	945 28.36%	78 2.34%	420 12.61%	274 8.22%	53 1.59%
1991	3,399	90 2.64%	1,503 44.13%	974 28.60%	87 2.55%	407 11.95%	253 7.43%	85 2.50%
1992	3,801	119 3.13%	1,822 47.90%	1,034 27.18%	70 1.84%	384 10.09%	296 7.78%	76 2.00%
1993	4,177	158 3.78%	2,258 54.04%	959 22.95%	81 1.94%	374 8.95%	270 6.46%	77 1.84%
1994	4,506	186 4.12%	2,496 55.28%	979 21.68%	86 1.90%	414 9.17%	280 6.20%	65 1.44%
1995	4,659	178 3.81%	2,556 54.78%	1,045 22.40%	110 2.36%	423 9.07%	274 5.87%	73 1.56%

Percent submitted to the open registry

Hips

Report year	Cases	Excellent %	Good %	Fair %	Borderline %	Mild %	Moderate %	Severe %
1996	4,527	142 3.13%	2,318 51.11%	1,193 26.31%	93 2.05%	400 8.82%	321 7.08%	60 1.32%
1997	4,530	160 3.53%	2,273 50.12%	1,164 25.67%	122 2.69%	450 9.92%	296 6.53%	65 1.43%
1998	4,144	140 3.37%	2,029 48.88%	1,098 26.45%	121 2.91%	431 10.38%	278 6.70%	47 1.13%
1999	3,954	201 5.08%	2,138 54.04%	851 21.51%	86 2.17%	363 9.18%	256 6.47%	59 1.49%
2000	3,563	193 5.41%	1,855 52.00%	783 21.95%	79 2.21%	360 10.09%	251 7.04%	42 1.18%
2001	3,184 10.04%	172 5.40%	1,663 52.18%	694 21.78%	68 2.13%	317 9.95%	219 6.87%	51 1.60%
2002	3,345 17.69%	114 3.41%	1,866 55.75%	735 21.96%	65 1.94%	342 10.22%	195 5.83%	28 0.84%
2003	3,019 12.55%	122 4.04%	1,778 58.87%	642 21.26%	44 1.46%	251 8.31%	152 5.03%	30 0.99%
2004	3,075 17.36%	137 4.45%	1,753 56.99%	602 19.57%	44 1.43%	315 10.24%	180 5.85%	44 1.43%
2005	3,159 20.89%	172 5.44%	1,780 56.35%	597 18.90%	39 1.23%	342 10.83%	185 5.86%	44 1.39%
2006	3,010 22.97%	126 4.18%	1,609 53.42%	603 20.02%	65 2.16%	379 12.58%	197 6.54%	31 1.03%
2007	2,812 22.00%	151 5.37%	1,475 52.42%	582 20.68%	41 1.46%	370 13.15%	158 5.61%	35 1.24%
2008	2,697 24.11%	224 8.30%	1,427 52.85%	506 18.74%	29 1.07%	331 12.26%	144 5.33%	36 1.33%
2009	2,491 22.34%	211 8.46%	1,293 51.87%	478 19.17%	37 1.48%	302 12.11%	148 5.94%	22 0.88%
2010	2,471 22.11%	151 6.10%	1,316 53.19%	489 19.77%	50 2.02%	313 12.65%	122 4.93%	30 1.21%
2011	2,341 22.80%	165 7.05%	1,316 56.19%	397 16.95%	46 1.96%	285 12.17%	104 4.44%	28 1.20%
2012	2,450 23.29%	164 6.69%	1,363 55.59%	427 17.41%	40 1.63%	302 12.32%	126 5.14%	28 1.14%
2013	2,488 19.74%	170 6.82%	1,436 57.62%	412 16.53%	39 1.57%	286 11.48%	117 4.70%	28 1.12%
2014	2,375 18.88%	191 8.03%	1,331 55.97%	394 16.57%	22 0.93%	297 12.49%	120 5.05%	20 0.84%
2015	2,856 21.90%	220 7.70%	1,595 55.81%	436 15.26%	35 1.22%	381 13.33%	159 5.56%	30 1.05%
2016	2,959 25.28%	211 7.13%	1,570 53.06%	501 16.93%	32 1.08%	427 14.43%	187 6.32%	31 1.05%
2017	3,226 23.71%	246 7.62%	1,742 53.98%	524 16.24%	29 0.90%	441 13.67%	207 6.41%	37 1.15%
2018	3,299 24.53%	220 6.66%	1,835 55.57%	514 15.57%	27 0.82%	463 14.02%	206 6.24%	34 1.03%

Percent submitted to the open registry

Hips

<i>Report year</i>	<i>Cases</i>	<i>Excellent</i> %	<i>Good</i> %	<i>Fair</i> %	<i>Borderline</i> %	<i>Mild</i> %	<i>Moderate</i> %	<i>Severe</i> %
2019	3,224	242	1,729	541	32	454	204	22
	26.05%	7.49%	53.55%	16.75%	0.99%	14.06%	6.32%	0.68%
2020	3,293	259	1,759	494	41	488	211	41
	23.65%	7.85%	53.34%	14.98%	1.24%	14.80%	6.40%	1.24%
Totals	128,793	5,945	67,682	28,032	2,249	14,352	8,648	1,885
		4.61%	52.49%	21.74%	1.74%	11.13%	6.71%	1.46%

Elbow

<i>Report Year</i>	<i>Cases</i>	<i>Normal %</i>	<i>Grade 1 %</i>	<i>Grade 2 %</i>	<i>Grade 3 %</i>	<i>Borderline %</i>
1989	24	22 91.67%	1 4.17%		1 4.17%	
1990	635	523 82.36%	86 13.54%	19 2.99%	7 1.10%	
1991	728	583 80.08%	95 13.05%	27 3.71%	23 3.16%	
1992	948	722 76.16%	139 14.66%	59 6.22%	24 2.53%	4 0.42%
1993	1,182	929 78.60%	179 15.14%	46 3.89%	21 1.78%	7 0.59%
1994	1,467	1,182 80.57%	183 12.47%	66 4.50%	33 2.25%	3 0.20%
1995	1,571	1,236 78.68%	215 13.69%	76 4.84%	39 2.48%	5 0.32%
1996	1,542	1,244 80.67%	200 12.97%	65 4.22%	29 1.88%	4 0.26%
1997	1,812	1,439 79.42%	248 13.69%	90 4.97%	29 1.60%	6 0.33%
1998	1,741	1,374 78.92%	262 15.05%	76 4.37%	27 1.55%	2 0.11%
1999	1,712	1,364 79.67%	250 14.60%	77 4.50%	17 0.99%	4 0.23%
2000	1,602	1,265 78.96%	257 16.04%	58 3.62%	20 1.25%	2 0.12%
2001	1,609	1,297 80.61%	237 14.73%	55 3.42%	19 1.18%	1 0.06%
2002	1,674	1,369 81.78%	243 14.52%	46 2.75%	15 0.90%	1 0.06%
2003	1,571	1,288 81.99%	223 14.19%	52 3.31%	8 0.51%	
2004	1,591	1,312 82.46%	215 13.51%	54 3.39%	9 0.57%	1 0.06%
2005	1,704	1,385 81.28%	224 13.15%	80 4.69%	15 0.88%	
2006	1,642	1,347 82.03%	238 14.49%	44 2.68%	12 0.73%	1 0.06%
2007	1,719	1,395 81.15%	265 15.42%	50 2.91%	7 0.41%	2 0.12%
2008	1,634	1,334 81.64%	224 13.71%	61 3.73%	14 0.86%	1 0.06%
2009	1,623	1,327 81.76%	220 13.56%	62 3.82%	9 0.55%	5 0.31%

Elbow

<i>Report Year</i>	<i>Cases</i>	<i>Normal</i> <i>%</i>	<i>Grade 1</i> <i>%</i>	<i>Grade 2</i> <i>%</i>	<i>Grade 3</i> <i>%</i>	<i>Borderline</i> <i>%</i>
2010	1,622	1,320 81.38%	214 13.19%	72 4.44%	13 0.80%	3 0.18%
2011	1,593	1,319 82.80%	215 13.50%	49 3.08%	8 0.50%	2 0.13%
2012	1,743	1,444 82.85%	241 13.83%	46 2.64%	7 0.40%	5 0.29%
2013	1,823	1,515 83.10%	243 13.33%	53 2.91%	9 0.49%	3 0.16%
2014	1,812	1,565 86.37%	198 10.93%	41 2.26%	5 0.28%	3 0.17%
2015	2,205	1,868 84.72%	267 12.11%	61 2.77%	5 0.23%	4 0.18%
2016	2,344	1,985 84.68%	273 11.65%	70 2.99%	12 0.51%	4 0.17%
2017	2,657	2,177 81.93%	350 13.17%	108 4.06%	17 0.64%	5 0.19%
2018	2,843	2,370 83.36%	357 12.56%	101 3.55%	12 0.42%	3 0.11%
2019	2,746	2,307 84.01%	340 12.38%	88 3.20%	9 0.33%	2 0.07%
2020	2,959	2,449 82.76%	401 13.55%	99 3.35%	8 0.27%	2 0.07%
Totals	54,078	44,256 81.84%	7,303 13.50%	1,951 3.61%	483 0.89%	85 0.16%

Achromatopsia Day Blindness

<i>Report year</i>	<i>Cases</i>	<i>Normal</i>	<i>% Normal</i>	<i>Abnormal</i>	<i>% Abnormal</i>	<i>Carrier</i>	<i>% Carrier</i>
German Shepherd Dog							
2018	1	1	100.0				
2019	1	1	100.0				
Totals	2	2	100.0				

Adult Onset Neuropathy

<i>Report year</i>	<i>Cases</i>	<i>Normal</i>	<i>% Normal</i>	<i>Abnormal</i>	<i>% Abnormal</i>	<i>Carrier</i>	<i>% Carrier</i>
German Shepherd Dog							
2018	3	3	100.0				
Totals	3	3	100.0				

Advanced Cardiac

<i>Report year</i>	<i>Cases</i>	<i>Normal</i>	<i>% Normal</i>	<i>Abnormal</i>	<i>% Abnormal</i>	<i>Carrier</i>	<i>% Carrier</i>
German Shepherd Dog							
2016	25	24	96.0			1	4.0
2017	31	31	100.0				
2018	47	47	100.0				
2019	51	49	96.1	1	2.0	1	2.0
2020	36	36	100.0				
Totals	190	187	98.4	1	0.5	2	1.1

Agouti

<i>Report year</i>	<i>Cases</i>	<i>Normal</i>	<i>% Normal</i>	<i>Abnormal</i>	<i>% Abnormal</i>	<i>Carrier</i>	<i>% Carrier</i>
German Shepherd Dog							
2020	1	1	100.0				
Totals	1	1	100.0				

Baer Hearing Test

<i>Report year</i>	<i>Cases</i>	<i>Normal</i>	<i>% Normal</i>	<i>Abnormal</i>	<i>% Abnormal</i>	<i>Equivocal</i>	<i>% Equivocal</i>
German Shepherd Dog							
2005	10	10	100.0				
2007	3	3	100.0				
2008	7	7	100.0				
Totals	20	20	100.0				

Canine Leukocyte Adhesion Def.

<i>Report year</i>	<i>Cases</i>	<i>Normal</i>	<i>% Normal</i>	<i>Abnormal</i>	<i>% Abnormal</i>	<i>Carrier</i>	<i>% Carrier</i>
German Shepherd Dog							

Canine Leukocyte Adhesion Def.

<i>Report year</i>	<i>Cases</i>	<i>Normal</i>	<i>% Normal</i>	<i>Abnormal</i>	<i>% Abnormal</i>	<i>Carrier</i>	<i>% Carrier</i>
2017	2	2	100.0				
2018	9	9	100.0				
2020	7	7	100.0				
Totals	18	18	100.0				

Canine Multifocal Retinopathy

<i>Report year</i>	<i>Cases</i>	<i>Normal</i>	<i>% Normal</i>	<i>Abnormal</i>	<i>% Abnormal</i>	<i>Carrier</i>	<i>% Carrier</i>
German Shepherd Dog							
2020	1	1	100.0				
Totals	1	1	100.0				

Cataracts

<i>Report year</i>	<i>Cases</i>	<i>Normal</i>	<i>% Normal</i>	<i>Abnormal</i>	<i>% Abnormal</i>	<i>Carrier</i>	<i>% Carrier</i>
German Shepherd Dog							
2015	1	1	100.0				
Totals	1	1	100.0				

Cleft Lip/Palate Syndactyly

<i>Report year</i>	<i>Cases</i>	<i>Normal</i>	<i>% Normal</i>	<i>Abnormal</i>	<i>% Abnormal</i>	<i>Carrier</i>	<i>% Carrier</i>
German Shepherd Dog							
2018	1	1	100.0				
2020	1	1	100.0				
Totals	2	2	100.0				

Cone Degeneration

<i>Report year</i>	<i>Cases</i>	<i>Normal</i>	<i>% Normal</i>	<i>Abnormal</i>	<i>% Abnormal</i>	<i>Carrier</i>	<i>% Carrier</i>
German Shepherd Dog							
2018	2	2	100.0				
2019	2	2	100.0				
2020	3	3	100.0				
Totals	7	7	100.0				

Congenital Cardiac

<i>Report year</i>	<i>Cases</i>	<i>Normal</i>	<i>% Normal</i>	<i>Abnormal</i>	<i>% Abnormal</i>	<i>Equivocal</i>	<i>% Equivocal</i>
German Shepherd Dog							
1996	13	13	100.0				
1997	21	21	100.0				
1998	16	16	100.0				

Congenital Cardiac

<i>Report year</i>	<i>Cases</i>	<i>Normal</i>	<i>% Normal</i>	<i>Abnormal</i>	<i>% Abnormal</i>	<i>Equivocal</i>	<i>% Equivocal</i>
1999	16	16	100.0				
2000	29	29	100.0				
2001	26	26	100.0				
2002	29	29	100.0				
2003	32	32	100.0				
2004	37	37	100.0				
2005	50	50	100.0				
2006	45	45	100.0				
2007	61	60	98.4	1	1.6		
2008	92	92	100.0				
2009	108	106	98.2			2	1.9
2010	126	126	100.0				
2011	143	143	100.0				
2012	154	153	99.4			1	0.7
2013	148	148	100.0				
2014	114	114	100.0				
2015	189	188	99.5			1	0.5
2016	199	196	98.5			3	1.5
2017	187	186	99.5			1	0.5
2018	172	172	100.0				
2019	167	167	100.0				
2020	136	136	100.0				
Totals	2310	2301	99.6	1	0.0	8	0.4

D Locus

<i>Report year</i>	<i>Cases</i>	<i>Normal</i>	<i>% Normal</i>	<i>Abnormal</i>	<i>% Abnormal</i>
German Shepherd Dog					
2016	1	1	100.0		
Totals	1	1	100.0		

Degenerative Myelopathy

<i>Report year</i>	<i>Cases</i>	<i>Normal</i>	<i>% Normal</i>	<i>Abnormal</i>	<i>% Abnormal</i>	<i>Carrier</i>	<i>% Carrier</i>
German Shepherd Dog							
2008	100	47	47.0	21	21.0	32	32.0
2009	328	151	46.0	69	21.0	108	32.9
2010	433	233	53.8	75	17.3	125	28.9
2011	778	401	51.5	126	16.2	251	32.3
2012	1143	582	50.9	180	15.8	381	33.3
2013	981	524	53.4	151	15.4	306	31.2
2014	1201	660	55.0	172	14.3	369	30.7
2015	1456	805	55.3	189	13.0	462	31.7
2016	1341	779	58.1	161	12.0	401	29.9
2017	1312	770	58.7	186	14.2	356	27.1
2018	1295	770	59.5	150	11.6	375	29.0
2019	1297	727	56.1	181	14.0	389	30.0
2020	1217	717	58.9	157	12.9	343	28.2
Totals	12882	7166	55.6	1,818	14.1	3898	30.3

Dentition Database

<i>Report year</i>	<i>Cases</i>	<i>Normal</i>	<i>% Normal</i>	<i>Abnormal</i>	<i>% Abnormal</i>	<i>Carrier</i>	<i>% Carrier</i>
German Shepherd Dog							
2012	75	73	97.3	2	2.7		
2013	44	41	93.2	3	6.8		
2014	46	46	100.0				
2015	77	76	98.7	1	1.3		
2016	73	72	98.6	1	1.4		
2017	113	112	99.1	1	0.9		
2018	77	72	93.5	5	6.5		
2019	93	92	98.9	1	1.1		
2020	87	85	97.7	2	2.3		
Totals	685	669	97.7	16	2.3		

Dilated Cardiomyopathy

<i>Report year</i>	<i>Cases</i>	<i>Normal</i>	<i>% Normal</i>	<i>Abnormal</i>	<i>% Abnormal</i>	<i>Carrier</i>	<i>% Carrier</i>
German Shepherd Dog							
2019	2	2	100.0				
2020	1	1	100.0				
Totals	3	3	100.0				

Ectodermal Dysplasia

<i>Report year</i>	<i>Cases</i>	<i>Normal</i>	<i>% Normal</i>	<i>Abnormal</i>	<i>% Abnormal</i>	<i>Carrier</i>	<i>% Carrier</i>
German Shepherd Dog							
2017	1	1	100.0				
2018	3	3	100.0				
2019	2	2	100.0				
2020	2	2	100.0				
Totals	8	8	100.0				

Eyes

<i>Report year</i>	<i>Cases</i>	<i>Normal</i>	<i>% Normal</i>	<i>Abnormal</i>	<i>% Abnormal</i>	<i>Breeder opt.</i>	<i>% Breeder opt.</i>
German Shepherd Dog							
2012	2	2	100.0				
2013	87	76	87.4	1	1.2	10	11.5
2014	74	63	85.1	2	2.7	9	12.2
2015	128	107	83.6	1	0.8	20	15.6
2016	135	113	83.7	1	0.7	21	15.6
2017	84	71	84.5			13	15.5
2018	147	116	78.9	6	4.1	25	17.0
2019	135	115	85.2	1	0.7	19	14.1
2020	68	57	83.8	1	1.5	10	14.7
Totals	860	720	83.7	13	1.5	127	14.8

Fanconi Syndrome

<i>Report year</i>	<i>Cases</i>	<i>Normal</i>	<i>% Normal</i>	<i>Abnormal</i>	<i>% Abnormal</i>	<i>Carrier</i>	<i>% Carrier</i>
German Shepherd Dog							
2018	1	1	100.0				
Totals	1	1	100.0				

Hemophilia A

<i>Report year</i>	<i>Cases</i>	<i>Normal</i>	<i>% Normal</i>	<i>Abnormal</i>	<i>% Abnormal</i>	<i>Carrier</i>	<i>% Carrier</i>
German Shepherd Dog							
2017	2	2	100.0				
2018	14	14	100.0				
2019	29	29	100.0				
2020	31	31	100.0				
Totals	76	76	100.0				

Hemophilia B

<i>Report year</i>	<i>Cases</i>	<i>Normal</i>	<i>% Normal</i>	<i>Abnormal</i>	<i>% Abnormal</i>	<i>Carrier</i>	<i>% Carrier</i>
German Shepherd Dog							
2020	3	3	100.0				
Totals	3	3	100.0				

Hyperuricosuria

<i>Report year</i>	<i>Cases</i>	<i>Normal</i>	<i>% Normal</i>	<i>Abnormal</i>	<i>% Abnormal</i>	<i>Carrier</i>	<i>% Carrier</i>
German Shepherd Dog							
2014	6	6	100.0				
2015	1	1	100.0				
2016	14	14	100.0				
2017	10	10	100.0				
2018	19	19	100.0				
2019	27	27	100.0				
2020	29	29	100.0				
Totals	106	106	100.0				

Ichthyosis

<i>Report year</i>	<i>Cases</i>	<i>Normal</i>	<i>% Normal</i>	<i>Abnormal</i>	<i>% Abnormal</i>	<i>Carrier</i>	<i>% Carrier</i>
German Shepherd Dog							
2020	1	1	100.0				
Totals	1	1	100.0				

Kidney

<i>Report year</i>	<i>Cases</i>	<i>Normal</i>	<i>% Normal</i>	<i>Abnormal</i>	<i>% Abnormal</i>	<i>Carrier</i>	<i>% Carrier</i>
German Shepherd Dog							
2018	1	1	100.0				
Totals	1	1	100.0				

Legg-Calve-Perthes

<i>Report year</i>	<i>Cases</i>	<i>Normal</i>	<i>% Normal</i>	<i>Abnormal</i>	<i>% Abnormal</i>	<i>Carrier</i>	<i>% Carrier</i>
German Shepherd Dog							
2007	2	2	100.0				
2010	5	5	100.0				
2011	3	3	100.0				
2012	4	4	100.0				
2013	7	7	100.0				
2014	8	8	100.0				
2015	8	8	100.0				
2016	6	6	100.0				
2017	8	8	100.0				
2018	14	14	100.0				
2019	9	9	100.0				
2020	16	16	100.0				
Totals	90	90	100.0				

Leukocyte Adhesion Deficiency

<i>Report year</i>	<i>Cases</i>	<i>Normal</i>	<i>% Normal</i>	<i>Abnormal</i>	<i>% Abnormal</i>	<i>Carrier</i>	<i>% Carrier</i>
German Shepherd Dog							
2017	4	4	100.0				
2018	4	4	100.0				
2019	29	29	100.0				
2020	21	21	100.0				
Totals	58	58	100.0				

Mucopolysaccharidosis (Mps) Iiia

<i>Report year</i>	<i>Cases</i>	<i>Normal</i>	<i>% Normal</i>	<i>Abnormal</i>	<i>% Abnormal</i>	<i>Carrier</i>	<i>% Carrier</i>
German Shepherd Dog							
2018	1	1	100.0				
Totals	1	1	100.0				

Mucopolysaccharidosis (Mps) Vii

<i>Report year</i>	<i>Cases</i>	<i>Normal</i>	<i>% Normal</i>	<i>Abnormal</i>	<i>% Abnormal</i>	<i>Carrier</i>	<i>% Carrier</i>
German Shepherd Dog							
2007	2	2	100.0				
2016	1	1	100.0				

Mucopolysaccharidosis (Mps) Vii

<i>Report year</i>	<i>Cases</i>	<i>Normal</i>	<i>% Normal</i>	<i>Abnormal</i>	<i>% Abnormal</i>	<i>Carrier</i>	<i>% Carrier</i>
2017	6	6	100.0				
2018	13	13	100.0				
2019	30	30	100.0				
2020	31	31	100.0				
Totals	83	83	100.0				

Multiple Drug Resistance (Mdr1)

<i>Report year</i>	<i>Cases</i>	<i>Normal</i>	<i>% Normal</i>	<i>Abnormal</i>	<i>% Abnormal</i>	<i>Carrier</i>	<i>% Carrier</i>
German Shepherd Dog							
2006	2	2	100.0				
2007	9	9	100.0				
2010	3	3	100.0				
2011	3	3	100.0				
2012	3	3	100.0				
2013	1	1	100.0				
2014	16	16	100.0				
2015	3	3	100.0				
2016	9	9	100.0				
2017	14	14	100.0				
2018	30	30	100.0				
2019	29	29	100.0				
2020	36	36	100.0				
Totals	158	158	100.0				

Patella

<i>Report year</i>	<i>Cases</i>	<i>Normal</i>	<i>% Normal</i>	<i>Abnormal</i>	<i>% Abnormal</i>	<i>Carrier</i>	<i>% Carrier</i>
German Shepherd Dog							
1995	5	5	100.0				
1996	8	8	100.0				
1997	5	4	80.0	1	20.0		
1998	6	6	100.0				
1999	3	3	100.0				
2000	5	5	100.0				
2001	3	3	100.0				
2002	6	6	100.0				
2003	8	8	100.0				
2004	7	7	100.0				
2005	10	10	100.0				
2006	15	15	100.0				
2007	14	14	100.0				
2008	11	11	100.0				
2009	17	17	100.0				
2010	23	23	100.0				
2011	16	16	100.0				
2012	26	25	96.2	1	3.9		
2013	39	39	100.0				
2014	44	44	100.0				

Patella

<i>Report year</i>	<i>Cases</i>	<i>Normal</i>	<i>% Normal</i>	<i>Abnormal</i>	<i>% Abnormal</i>	<i>Carrier</i>	<i>% Carrier</i>
2015	49	48	98.0	1	2.0		
2016	108	108	100.0				
2017	120	120	100.0				
2018	116	114	98.3	2	1.7		
2019	84	83	98.8	1	1.2		
2020	114	111	97.4	3	2.6		
Totals	862	853	99.0	9	1.0		

Pituitary Dwarfism

<i>Report year</i>	<i>Cases</i>	<i>Normal</i>	<i>% Normal</i>	<i>Abnormal</i>	<i>% Abnormal</i>	<i>Carrier</i>	<i>% Carrier</i>
German Shepherd Dog							
2016	10	10	100.0				
2017	1	1	100.0				
2018	5	5	100.0				
Totals	16	16	100.0				

Primary Lens Luxation

<i>Report year</i>	<i>Cases</i>	<i>Normal</i>	<i>% Normal</i>	<i>Abnormal</i>	<i>% Abnormal</i>	<i>Carrier</i>	<i>% Carrier</i>
German Shepherd Dog							
2020	1	1	100.0				
Totals	1	1	100.0				

Shoulder

<i>Report year</i>	<i>Cases</i>	<i>Normal</i>	<i>% Normal</i>	<i>Abnormal</i>	<i>% Abnormal</i>	<i>Carrier</i>	<i>% Carrier</i>
German Shepherd Dog							
1992	1	1	100.0				
1993	2	2	100.0				
1997	1			1	100.0		
1999	2			2	100.0		
2005	24	24	100.0				
2006	6	6	100.0				
2007	4	4	100.0				
2008	6	6	100.0				
2009	7	7	100.0				
2010	5	5	100.0				
2011	7	6	85.7	1	14.3		
2012	12	12	100.0				
2013	8	8	100.0				
2014	9	9	100.0				
2015	7	7	100.0				
2016	10	10	100.0				
2017	8	8	100.0				
2018	15	15	100.0				
2019	10	10	100.0				

Shoulder

<i>Report year</i>	<i>Cases</i>	<i>Normal</i>	<i>% Normal</i>	<i>Abnormal</i>	<i>% Abnormal</i>
2020	6	6	100.0		
Totals	150	146	97.3	4	2.7

Thyroid

<i>Report year</i>	<i>Cases</i>	<i>Normal</i>	<i>% Normal</i>	<i>Abnormal</i>	<i>% Abnormal</i>	<i>Equivocal</i>	<i>% Equivocal</i>
German Shepherd Dog							
1996	9	8	88.9			1	11.1
1997	19	18	94.7			1	5.3
1998	20	19	95.0			1	5.0
1999	31	25	80.7			6	19.4
2000	30	29	96.7			1	3.3
2001	22	19	86.4	1	4.6	2	9.1
2002	28	28	100.0				
2003	45	38	84.4	1	2.2	6	13.3
2004	37	33	89.2	3	8.1	1	2.7
2005	35	30	85.7	1	2.9	4	11.4
2006	42	37	88.1	4	9.5	1	2.4
2007	47	46	97.9	1	2.1		
2008	58	52	89.7	2	3.5	4	6.9
2009	55	53	96.4			2	3.6
2010	63	60	95.2	2	3.2	1	1.6
2011	58	51	87.9	1	1.7	6	10.3
2012	58	53	91.4	1	1.7	4	6.9
2013	54	50	92.6			4	7.4
2014	44	43	97.7			1	2.3
2015	58	55	94.8	3	5.2		
2016	69	63	91.3	2	2.9	4	5.8
2017	61	57	93.4	2	3.3	2	3.3
2018	49	44	89.8	2	4.1	3	6.1
2019	49	43	87.8	2	4.1	4	8.2
2020	53	50	94.3	1	1.9	2	3.8
Totals	1094	1004	91.8	29	2.7	61	5.6

Von Willebrands

<i>Report year</i>	<i>Cases</i>	<i>Normal</i>	<i>% Normal</i>	<i>Abnormal</i>	<i>% Abnormal</i>	<i>Carrier</i>	<i>% Carrier</i>
German Shepherd Dog							
2018	3	3	100.0				
2019	1	1	100.0				
2020	13	13	100.0				
Totals	17	17	100.0				