

Pembroke Welsh Corgi

All data as of 12-31-2020

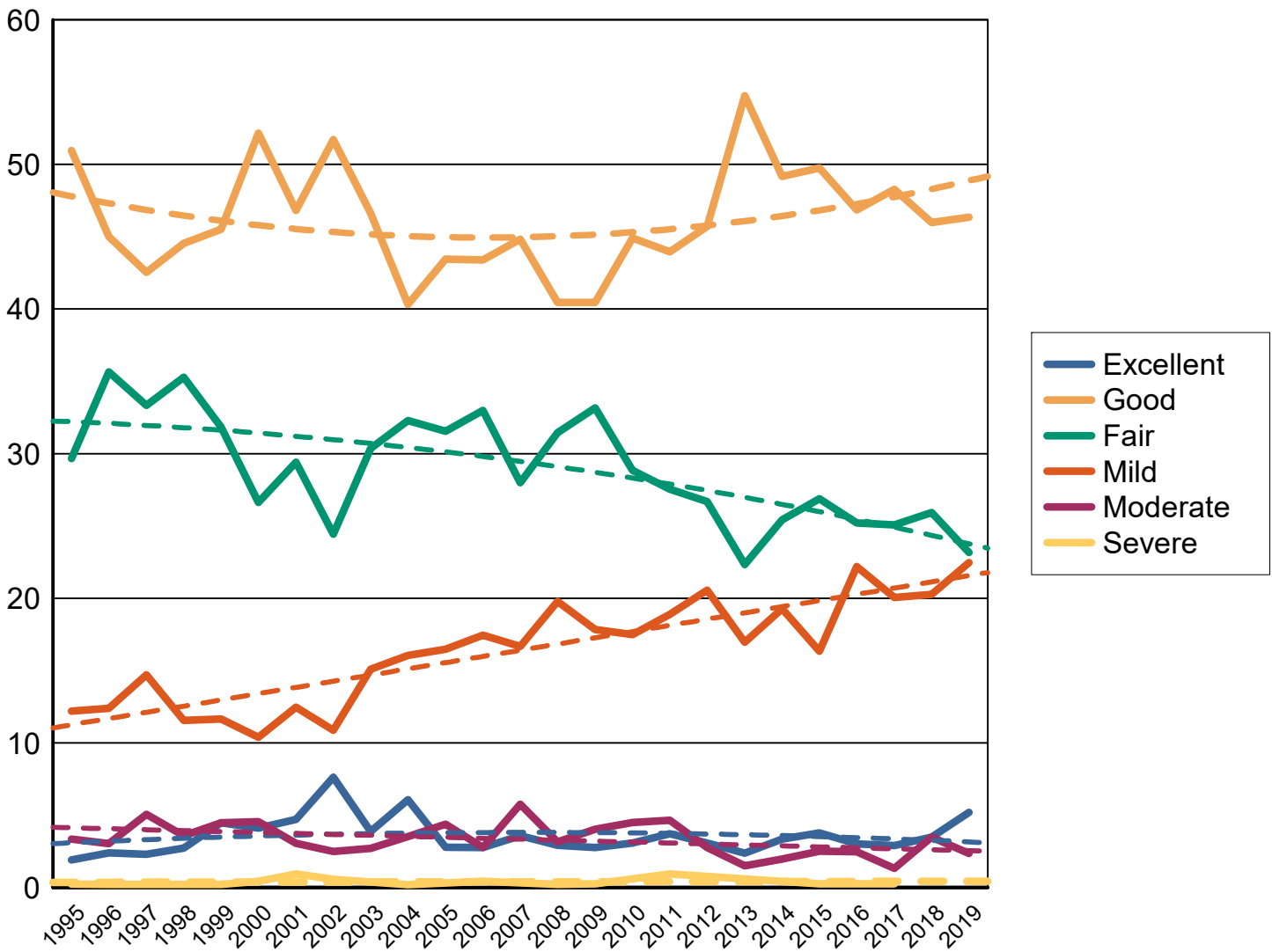
Dysplastic rank, all breeds with more than 100 cases

		<i>Normals</i>		<i>Equival or Carrier</i>		<i>Abnormal</i>	
Hips	34 of 191	11196	80.01%	17	0.12%	2781	19.87%
Elbow	76 of 135	1365	95.72%	4	0.28%	57	4.00%
Congenital Cardiac		635	100.00%	0		0	
Thyroid		40	83.33%	8	16.67%	0	
Legg-Calve-Perthes		75	100.00%	0		0	
Progressive Retinal Atrophy		6	100.00%	0		0	
Progressive Retinal Atrophy 3		30	100.00%	0		0	
Spine		1	0.58%	0		170	99.42%
Von Willebrands		488	91.04%	45	8.40%	3	0.56%
Baer Hearing Test		6	100.00%	0		0	
Multiple Drug Resistance (Mdr1)		1	100.00%	0		0	
Muscular Dystrophy		4	100.00%	0		0	
Hyperuricosuria		26	100.00%	0		0	
Degenerative Myelopathy		580	13.10%	1487	33.57%	2362	53.33%
Shoulder		8	66.67%	0		4	33.33%
Mizzou Biomarker Study		1	100.00%	0		0	
Basic Cardiac		28	100.00%	0		0	
Primary Lens Luxation		2	100.00%	0		0	
Severe Combined Immunodeficiency		20	100.00%	0		0	
D Locus		3	100.00%	0		0	
OFA EYE Registry		1908	98.55%	0		28	1.45%
Von Willebrands Cornell Blood Assa		1	100.00%	0		0	
Advanced Cardiac		29	100.00%	0		0	
Exercise Induced Collapse		85	88.54%	11	11.46%	0	
Dentition Database		76	100.00%	0		0	

Patella	471	99.16%	0	4	0.84%
Chondrodystrophy (Cddy)	3	75.00%	0	1	25.00%
Chondrodysplasia (Cdpa)	3	75.00%	0	1	25.00%

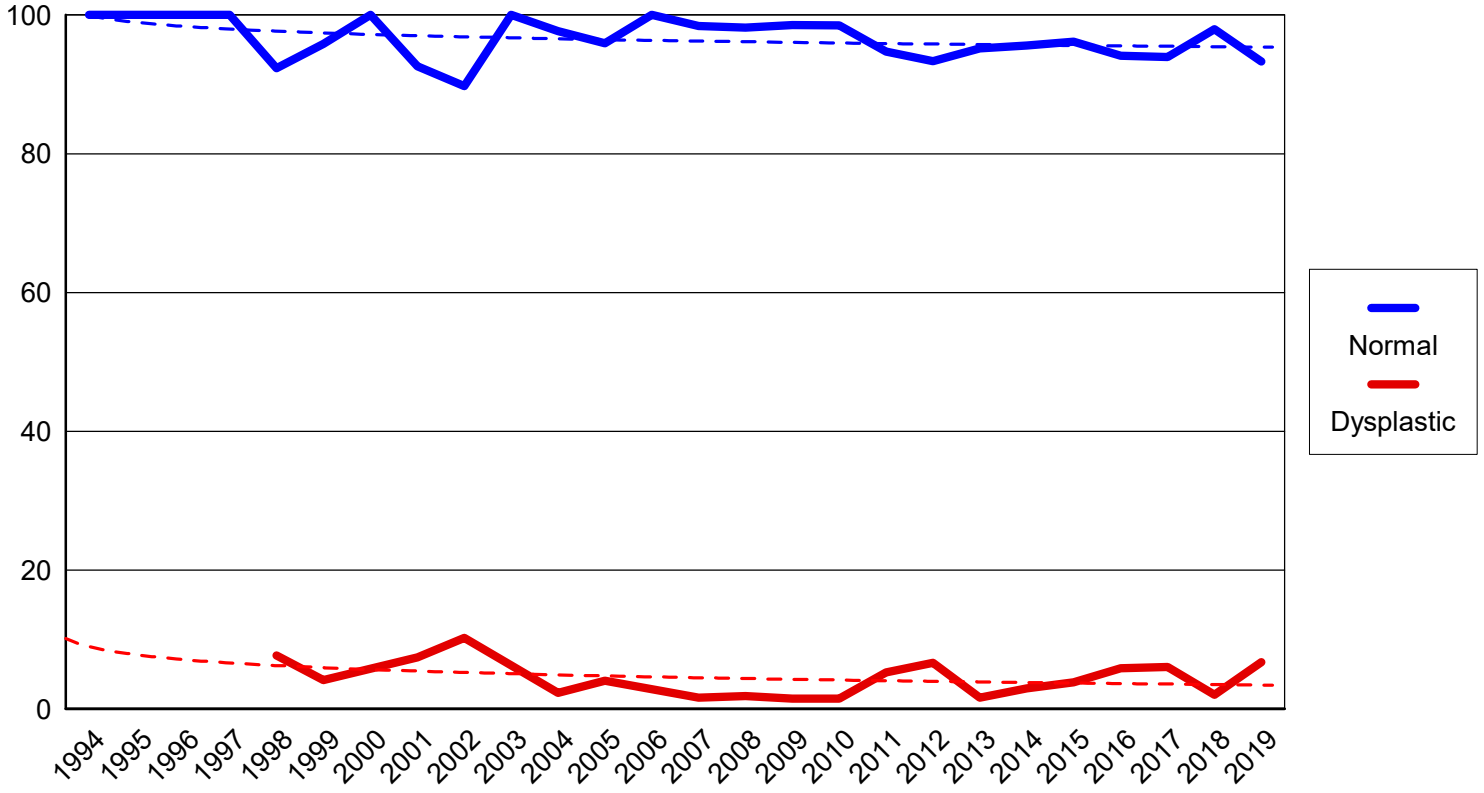
PEMBROKE WELSH CORGI

Hip percentages by rating with trendlines



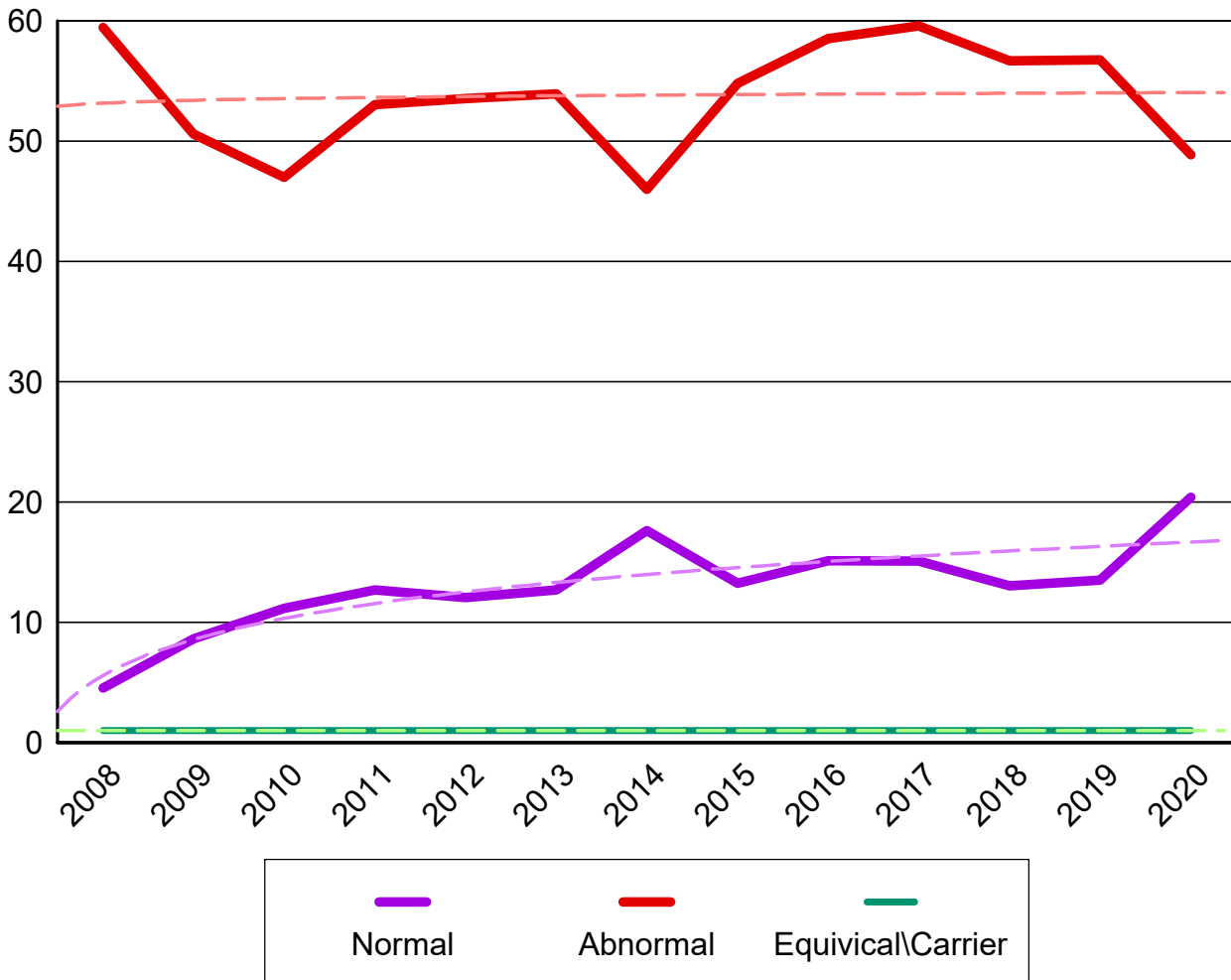
PEMBROKE WELSH CORGI

Elbow percentages by rating with trendlines



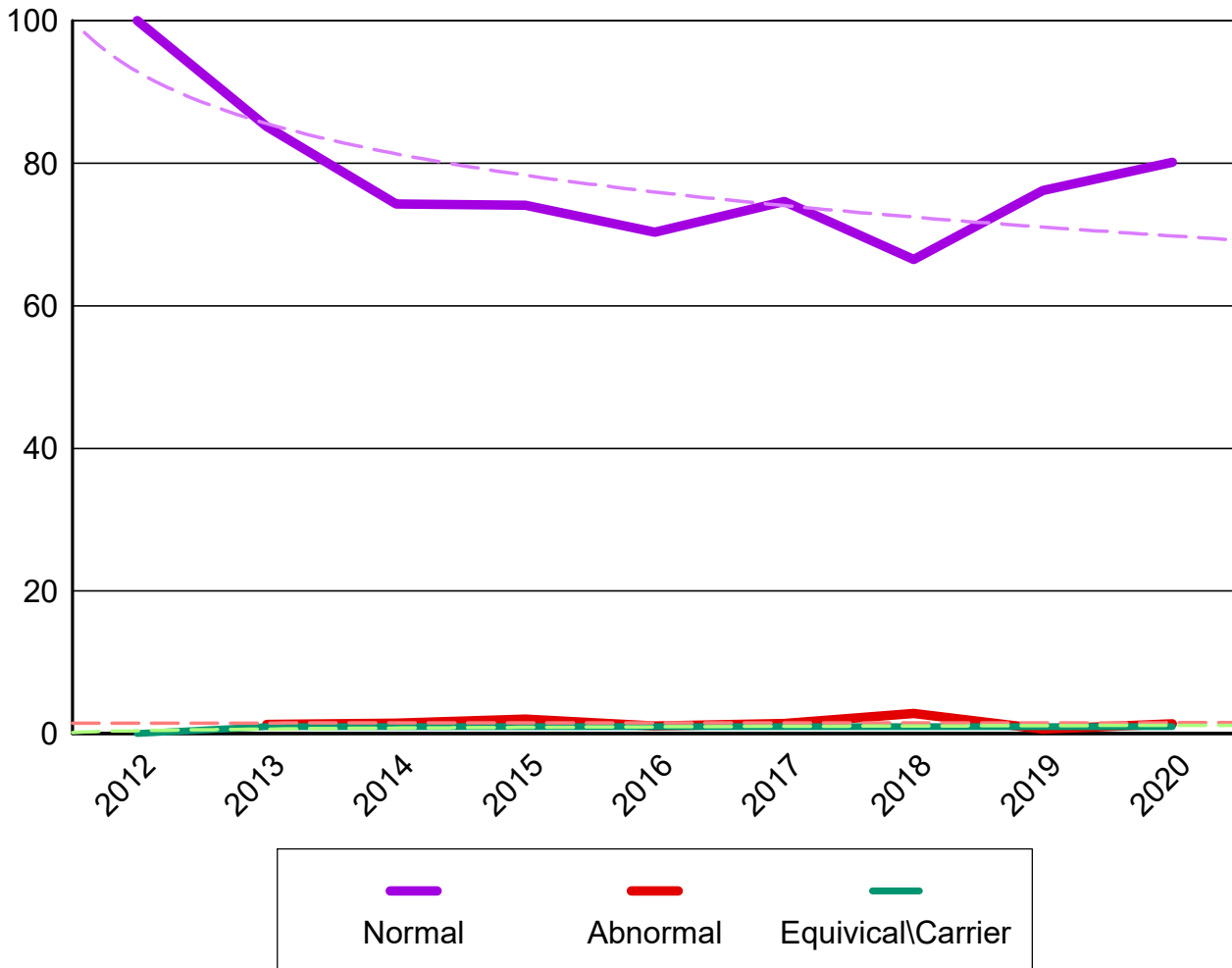
DEGENERATIVE MYELOPATHY

PEMBROKE WELSH CORGI



PEMBROKE WELSH CORGI

EYES



Percent submitted to the open registry

Hips

Report year	Cases	Excellent %	Good %	Fair %	Borderline %	Mild %	Moderate %	Severe %
1979	2	1 50.00%	1 50.00%	0	0	0	0	0
1983	6	0	0	3 50.00%	0	2 33.33%	1 16.67%	0
1984	97	0	30 30.93%	36 37.11%	3 3.09%	19 19.59%	9 9.28%	0
1985	136	0	50 36.76%	57 41.91%	3 2.21%	21 15.44%	4 2.94%	1 0.74%
1986	159	1 0.63%	58 36.25%	70 43.75%	2 1.25%	20 12.50%	8 5.00%	0
1987	206	3 1.46%	79 38.35%	91 44.17%	1 0.49%	17 8.25%	12 5.83%	3 1.46%
1988	231	4 1.73%	86 37.23%	94 40.69%	1 0.43%	31 13.42%	11 4.76%	4 1.73%
1989	260	6 2.31%	94 36.15%	109 41.92%	3 1.15%	33 12.69%	14 5.38%	1 0.38%
1990	288	4 1.39%	106 36.81%	120 41.67%	2 0.69%	42 14.58%	13 4.51%	1 0.35%
1991	344	7 2.03%	140 40.70%	127 36.92%	3 0.87%	46 13.37%	19 5.52%	2 0.58%
1992	393	3 0.76%	163 41.48%	155 39.44%	8 2.04%	42 10.69%	21 5.34%	1 0.25%
1993	395	10 2.53%	176 44.56%	139 35.19%	5 1.27%	53 13.42%	9 2.28%	3 0.76%
1994	375	12 3.20%	184 49.07%	109 29.07%	7 1.87%	47 12.53%	15 4.00%	1 0.27%
1995	418	8 1.91%	213 50.96%	124 29.67%	7 1.67%	51 12.20%	14 3.35%	1 0.24%
1996	460	11 2.39%	207 45.00%	164 35.65%	6 1.30%	57 12.39%	14 3.04%	1 0.22%
1997	434	10 2.30%	185 42.53%	145 33.33%	8 1.84%	64 14.71%	22 5.06%	0
1998	475	13 2.73%	212 44.54%	168 35.29%	9 1.89%	55 11.55%	17 3.57%	1 0.21%
1999	446	20 4.48%	203 45.52%	142 31.84%	8 1.79%	52 11.66%	20 4.48%	1 0.22%
2000	461	19 4.11%	241 52.16%	123 26.62%	7 1.52%	48 10.39%	21 4.55%	2 0.43%
2001	422	20 4.71%	199 46.82%	125 29.41%	8 1.88%	53 12.47%	13 3.06%	4 0.94%
2002	521	40 7.63%	271 51.72%	128 24.43%	9 1.72%	57 10.88%	13 2.48%	3 0.57%
2003	517	20 3.87%	241 46.62%	157 30.37%	7 1.35%	78 15.09%	14 2.71%	0

Percent submitted to the open registry

Hips

Report year	Cases	Excellent %	Good %	Fair %	Borderline %	Mild %	Moderate %	Severe %
2004	510	31	206	165	7	82	18	1
	11.55%	6.07%	40.31%	32.29%	1.37%	16.05%	3.52%	0.20%
2005	504	14	219	159	7	83	22	0
	16.07%	2.78%	43.45%	31.55%	1.39%	16.47%	4.37%	
2006	470	13	204	155	1	82	13	2
	17.87%	2.77%	43.40%	32.98%	0.21%	17.45%	2.77%	0.43%
2007	504	18	226	141	6	84	29	0
	11.71%	3.57%	44.84%	27.98%	1.19%	16.67%	5.75%	
2008	445	13	180	140	9	88	14	1
	14.38%	2.92%	40.45%	31.46%	2.02%	19.78%	3.15%	0.22%
2009	398	11	161	132	6	71	16	1
	10.80%	2.76%	40.45%	33.17%	1.51%	17.84%	4.02%	0.25%
2010	423	13	190	122	5	74	19	0
	10.64%	3.07%	44.92%	28.84%	1.18%	17.49%	4.49%	
2011	323	12	142	89	1	61	15	3
	14.24%	3.72%	43.96%	27.55%	0.31%	18.89%	4.64%	0.93%
2012	325	10	149	87	3	67	9	0
	12.58%	3.07%	45.71%	26.69%	0.92%	20.55%	2.76%	
2013	334	8	184	75	5	57	5	0
	11.01%	2.38%	54.76%	22.32%	1.49%	16.96%	1.49%	
2014	358	12	176	91	3	69	7	0
	7.82%	3.35%	49.16%	25.42%	0.84%	19.27%	1.96%	
2015	398	15	198	107	2	65	10	1
	8.29%	3.77%	49.75%	26.88%	0.50%	16.33%	2.51%	0.25%
2016	365	11	171	92	1	81	9	0
	11.78%	3.01%	46.85%	25.21%	0.27%	22.19%	2.47%	
2017	377	11	183	95	6	76	5	1
	12.14%	2.90%	48.28%	25.07%	1.58%	20.05%	1.32%	0.26%
2018	459	16	211	119	4	93	16	0
	9.80%	3.49%	45.97%	25.93%	0.87%	20.26%	3.49%	
2019	423	22	196	98	2	95	10	0
	10.40%	5.20%	46.34%	23.17%	0.47%	22.46%	2.36%	
2020	493	23	224	117	5	104	16	4
	13.97%	4.66%	45.34%	23.68%	1.01%	21.05%	3.24%	0.81%
Totals	14,155	465	6,359	4,370	180	2,220	517	44
		3.28%	44.87%	30.84%	1.27%	15.66%	3.65%	0.31%

Elbow

<i>Report Year</i>	<i>Cases</i>	<i>Normal %</i>	<i>Grade 1 %</i>	<i>Grade 2 %</i>	<i>Grade 3 %</i>	<i>Borderline %</i>
1992	5	3 60.00%	1 20.00%			1 20.00%
1993	8	7 87.50%	1 12.50%			
1994	8	8 100.00%				
1995	7	7 100.00%				
1996	19	19 100.00%				
1997	14	14 100.00%				
1998	13	12 92.31%			1 7.69%	
1999	24	23 95.83%	1 4.17%			
2000	17	17 100.00%				
2001	27	25 92.59%	2 7.41%			
2002	39	35 89.74%	4 10.26%			
2003	32	32 100.00%				
2004	43	42 97.67%	1 2.33%			
2005	49	47 95.92%	1 2.04%		1 2.04%	
2006	43	43 100.00%				
2007	62	61 98.39%	1 1.61%			
2008	54	53 98.15%	1 1.85%			
2009	68	67 98.53%	1 1.47%			
2010	67	66 98.51%	1 1.49%			
2011	38	36 94.74%	2 5.26%			
2012	45	42 93.33%	2 4.44%		1 2.22%	

Elbow

<i>Report Year</i>	<i>Cases</i>	<i>Normal %</i>	<i>Grade 1 %</i>	<i>Grade 2 %</i>	<i>Grade 3 %</i>	<i>Borderline %</i>
2013	62	59 95.16%	1 1.61%			2 3.23%
2014	68	65 95.59%	1 1.47%	1 1.47%		1 1.47%
2015	78	75 96.15%	2 2.56%	1 1.28%		
2016	85	80 94.12%	3 3.53%	2 2.35%		
2017	99	93 93.94%	3 3.03%	1 1.01%	2 2.02%	
2018	97	95 97.94%	1 1.03%	1 1.03%		
2019	104	97 93.27%	7 6.73%			
2020	151	142 94.04%	4 2.65%	3 1.99%	2 1.32%	
Totals	1,426	1,365 95.72%	41 2.88%	12 0.84%	4 0.28%	4 0.28%

Advanced Cardiac

<i>Report year</i>	<i>Cases</i>	<i>Normal</i>	<i>% Normal</i>	<i>Abnormal</i>	<i>% Abnormal</i>	<i>Carrier</i>	<i>% Carrier</i>
Pembroke Welsh Corgi							
2016	3	3	100.0				
2017	8	8	100.0				
2018	7	7	100.0				
2019	6	6	100.0				
2020	5	5	100.0				
Totals	29	29	100.0				

Baer Hearing Test

<i>Report year</i>	<i>Cases</i>	<i>Normal</i>	<i>% Normal</i>	<i>Abnormal</i>	<i>% Abnormal</i>	<i>Equivocal</i>	<i>% Equivocal</i>
Pembroke Welsh Corgi							
2004	1	1	100.0				
2014	2	2	100.0				
2016	1	1	100.0				
2019	2	2	100.0				
Totals	6	6	100.0				

Chondrodysplasia (Cdpa)

<i>Report year</i>	<i>Cases</i>	<i>Normal</i>	<i>% Normal</i>	<i>Abnormal</i>	<i>% Abnormal</i>	<i>Carrier</i>	<i>% Carrier</i>
Pembroke Welsh Corgi							
2019	1			1	100.0		
2020	3	3	100.0				
Totals	4	3	75.0	1	25.0		

Chondrodystrophy (Cddy)

<i>Report year</i>	<i>Cases</i>	<i>Normal</i>	<i>% Normal</i>	<i>Abnormal</i>	<i>% Abnormal</i>	<i>Carrier</i>	<i>% Carrier</i>
Pembroke Welsh Corgi							
2019	1			1	100.0		
2020	3	3	100.0				
Totals	4	3	75.0	1	25.0		

Congenital Cardiac

<i>Report year</i>	<i>Cases</i>	<i>Normal</i>	<i>% Normal</i>	<i>Abnormal</i>	<i>% Abnormal</i>	<i>Equivocal</i>	<i>% Equivocal</i>
Pembroke Welsh Corgi							
1996	2	2	100.0				
1997	4	4	100.0				
1998	2	2	100.0				
1999	5	5	100.0				
2000	4	4	100.0				
2001	4	4	100.0				
2002	16	16	100.0				

Congenital Cardiac

<i>Report year</i>	<i>Cases</i>	<i>Normal</i>	<i>% Normal</i>	<i>Abnormal</i>	<i>% Abnormal</i>	<i>Equivocal</i>	<i>% Equivocal</i>
2003	10	10	100.0				
2004	13	13	100.0				
2005	14	14	100.0				
2006	19	19	100.0				
2007	30	30	100.0				
2008	23	23	100.0				
2009	25	25	100.0				
2010	10	10	100.0				
2011	24	24	100.0				
2012	36	36	100.0				
2013	16	16	100.0				
2014	26	26	100.0				
2015	26	26	100.0				
2016	49	49	100.0				
2017	64	64	100.0				
2018	65	65	100.0				
2019	95	95	100.0				
2020	53	53	100.0				
Totals	635	635	100.0				

D Locus

<i>Report year</i>	<i>Cases</i>	<i>Normal</i>	<i>% Normal</i>	<i>Abnormal</i>	<i>% Abnormal</i>
Pembroke Welsh Corgi					
2017	1	1	100.0		
2019	1	1	100.0		
2020	1	1	100.0		
Totals	3	3	100.0		

Degenerative Myelopathy

<i>Report year</i>	<i>Cases</i>	<i>Normal</i>	<i>% Normal</i>	<i>Abnormal</i>	<i>% Abnormal</i>	<i>Carrier</i>	<i>% Carrier</i>
Pembroke Welsh Corgi							
2008	286	13	4.6	170	59.4	103	36.0
2009	417	36	8.6	211	50.6	170	40.8
2010	349	39	11.2	164	47.0	146	41.8
2011	362	46	12.7	192	53.0	124	34.3
2012	340	41	12.1	182	53.5	117	34.4
2013	354	45	12.7	191	54.0	118	33.3
2014	437	77	17.6	201	46.0	159	36.4
2015	385	51	13.3	211	54.8	123	32.0
2016	357	54	15.1	209	58.5	94	26.3
2017	245	37	15.1	146	59.6	62	25.3
2018	284	37	13.0	161	56.7	86	30.3
2019	303	41	13.5	172	56.8	90	29.7
2020	309	63	20.4	151	48.9	95	30.7
Totals	4428	580	13.1	2,361	53.3	1487	33.6

Dentition Database

<i>Report year</i>	<i>Cases</i>	<i>Normal</i>	<i>% Normal</i>	<i>Abnormal</i>	<i>% Abnormal</i>	<i>Carrier</i>	<i>% Carrier</i>
Pembroke Welsh Corgi							
2014	1	1	100.0				
2015	6	6	100.0				
2016	18	18	100.0				
2017	12	12	100.0				
2018	18	18	100.0				
2019	14	14	100.0				
2020	7	7	100.0				
Totals	76	76	100.0				

Exercise Induced Collapse

<i>Report year</i>	<i>Cases</i>	<i>Normal</i>	<i>% Normal</i>	<i>Abnormal</i>	<i>% Abnormal</i>	<i>Carrier</i>	<i>% Carrier</i>
Pembroke Welsh Corgi							
2013	1	1	100.0				
2016	19	15	79.0			4	21.1
2017	15	11	73.3			4	26.7
2018	9	9	100.0				
2019	12	12	100.0				
2020	40	37	92.5			3	7.5
Totals	96	85	88.5			11	11.5

Eyes

<i>Report year</i>	<i>Cases</i>	<i>Normal</i>	<i>% Normal</i>	<i>Abnormal</i>	<i>% Abnormal</i>	<i>Breeder opt.</i>	<i>% Breeder opt.</i>
Pembroke Welsh Corgi							
2012	14	14	100.0				
2013	155	132	85.2	2	1.3	21	13.6
2014	206	153	74.3	3	1.5	50	24.3
2015	247	183	74.1	5	2.0	59	23.9
2016	283	199	70.3	3	1.1	81	28.6
2017	213	159	74.7	3	1.4	51	23.9
2018	212	141	66.5	6	2.8	65	30.7
2019	319	243	76.2	2	0.6	74	23.2
2020	287	230	80.1	4	1.4	53	18.5
Totals	1936	1454	75.1	28	1.5	454	23.5

Hyperuricosuria

<i>Report year</i>	<i>Cases</i>	<i>Normal</i>	<i>% Normal</i>	<i>Abnormal</i>	<i>% Abnormal</i>	<i>Carrier</i>	<i>% Carrier</i>
Pembroke Welsh Corgi							
2015	15	15	100.0				
2016	7	7	100.0				
2018	4	4	100.0				
Totals	26	26	100.0				

Legg-Calve-Perthes

<i>Report year</i>	<i>Cases</i>	<i>Normal</i>	<i>% Normal</i>	<i>Abnormal</i>	<i>% Abnormal</i>	<i>Carrier</i>	<i>% Carrier</i>
Pembroke Welsh Corgi							
2015	2	2	100.0				
2017	11	11	100.0				
2018	25	25	100.0				
2019	16	16	100.0				
2020	21	21	100.0				
Totals	75	75	100.0				

Multiple Drug Resistance (Mdr1)

<i>Report year</i>	<i>Cases</i>	<i>Normal</i>	<i>% Normal</i>	<i>Abnormal</i>	<i>% Abnormal</i>	<i>Carrier</i>	<i>% Carrier</i>
Pembroke Welsh Corgi							
2018	1	1	100.0				
Totals	1	1	100.0				

Muscular Dystrophy

<i>Report year</i>	<i>Cases</i>	<i>Normal</i>	<i>% Normal</i>	<i>Abnormal</i>	<i>% Abnormal</i>	<i>Carrier</i>	<i>% Carrier</i>
Pembroke Welsh Corgi							
2020	4	4	100.0				
Totals	4	4	100.0				

Patella

<i>Report year</i>	<i>Cases</i>	<i>Normal</i>	<i>% Normal</i>	<i>Abnormal</i>	<i>% Abnormal</i>	<i>Carrier</i>	<i>% Carrier</i>
Pembroke Welsh Corgi							
1994	2	2	100.0				
1995	1	1	100.0				
1998	3	3	100.0				
1999	3	3	100.0				
2000	4	4	100.0				
2001	2	2	100.0				
2002	2	2	100.0				
2003	7	7	100.0				
2004	8	8	100.0				
2005	8	8	100.0				
2006	11	11	100.0				
2007	10	10	100.0				
2008	14	14	100.0				
2009	15	15	100.0				
2010	6	6	100.0				
2011	10	10	100.0				
2012	23	23	100.0				
2013	10	10	100.0				
2014	11	11	100.0				
2015	15	15	100.0				
2016	39	37	94.9	2	5.1		

Patella

<i>Report year</i>	<i>Cases</i>	<i>Normal</i>	<i>% Normal</i>	<i>Abnormal</i>	<i>% Abnormal</i>	<i>Carrier</i>	<i>% Carrier</i>
2017	52	52	100.0				
2018	59	59	100.0				
2019	79	79	100.0				
2020	81	79	97.5	2	2.5		
Totals	475	471	99.2	4	0.8		

Primary Lens Luxation

<i>Report year</i>	<i>Cases</i>	<i>Normal</i>	<i>% Normal</i>	<i>Abnormal</i>	<i>% Abnormal</i>	<i>Carrier</i>	<i>% Carrier</i>
Pembroke Welsh Corgi							
2019	2	2	100.0				
Totals	2	2	100.0				

Progressive Retinal Atrophy

<i>Report year</i>	<i>Cases</i>	<i>Normal</i>	<i>% Normal</i>	<i>Abnormal</i>	<i>% Abnormal</i>	<i>Carrier</i>	<i>% Carrier</i>
Pembroke Welsh Corgi							
2018	1	1	100.0				
2020	5	5	100.0				
Totals	6	6	100.0				

Progressive Retinal Atrophy 3

<i>Report year</i>	<i>Cases</i>	<i>Normal</i>	<i>% Normal</i>	<i>Abnormal</i>	<i>% Abnormal</i>	<i>Carrier</i>	<i>% Carrier</i>
Pembroke Welsh Corgi							
2016	4	4	100.0				
2017	6	6	100.0				
2018	3	3	100.0				
2019	2	2	100.0				
2020	15	15	100.0				
Totals	30	30	100.0				

Severe Combined Immunodeficiency

<i>Report year</i>	<i>Cases</i>	<i>Normal</i>	<i>% Normal</i>	<i>Abnormal</i>	<i>% Abnormal</i>	<i>Carrier</i>	<i>% Carrier</i>
Pembroke Welsh Corgi							
2016	6	6	100.0				
2017	1	1	100.0				
2018	2	2	100.0				
2019	2	2	100.0				
2020	9	9	100.0				
Totals	20	20	100.0				

Shoulder

<i>Report year</i>	<i>Cases</i>	<i>Normal</i>	<i>% Normal</i>	<i>Abnormal</i>	<i>% Abnormal</i>
Pembroke Welsh Corgi					
1996	1			1	100.0
1997	1			1	100.0
1998	1			1	100.0
2002	1			1	100.0
2015	1	1	100.0		
2018	3	3	100.0		
2020	4	4	100.0		
Totals	12	8	66.7	4	33.3

Thyroid

<i>Report year</i>	<i>Cases</i>	<i>Normal</i>	<i>% Normal</i>	<i>Abnormal</i>	<i>% Abnormal</i>	<i>Equivocal</i>	<i>% Equivocal</i>
Pembroke Welsh Corgi							
1996	4	3	75.0			1	25.0
1997	1					1	100.0
1999	3	2	66.7			1	33.3
2002	2	2	100.0				
2003	1	1	100.0				
2004	6	5	83.3			1	16.7
2005	3	2	66.7			1	33.3
2006	5	3	60.0			2	40.0
2007	4	4	100.0				
2008	1	1	100.0				
2009	4	4	100.0				
2010	3	2	66.7			1	33.3
2011	1	1	100.0				
2012	3	3	100.0				
2015	2	2	100.0				
2016	3	3	100.0				
2018	2	2	100.0				
Totals	48	40	83.3			8	16.7

Von Willebrands

<i>Report year</i>	<i>Cases</i>	<i>Normal</i>	<i>% Normal</i>	<i>Abnormal</i>	<i>% Abnormal</i>	<i>Carrier</i>	<i>% Carrier</i>
Pembroke Welsh Corgi							
1998	2	2	100.0				
1999	29	28	96.6	1	3.5		
2000	65	62	95.4			3	4.6
2001	7	6	85.7			1	14.3
2002	5	3	60.0			2	40.0
2003	15	13	86.7			2	13.3
2004	15	15	100.0				
2005	27	24	88.9			3	11.1
2006	10	8	80.0			2	20.0
2007	11	11	100.0				
2008	13	10	76.9			3	23.1
2009	17	16	94.1			1	5.9

Von Willebrands

<i>Report year</i>	<i>Cases</i>	<i>Normal</i>	<i>% Normal</i>	<i>Abnormal</i>	<i>% Abnormal</i>	<i>Carrier</i>	<i>% Carrier</i>
2010	24	21	87.5	1	4.2	2	8.3
2011	16	14	87.5			2	12.5
2012	21	15	71.4	1	4.8	5	23.8
2013	14	13	92.9			1	7.1
2014	49	44	89.8			5	10.2
2015	25	23	92.0			2	8.0
2016	37	35	94.6			2	5.4
2017	28	27	96.4			1	3.6
2018	40	37	92.5			3	7.5
2019	15	13	86.7			2	13.3
2020	51	48	94.1			3	5.9
Totals	536	488	91.0	3	0.6	45	8.4