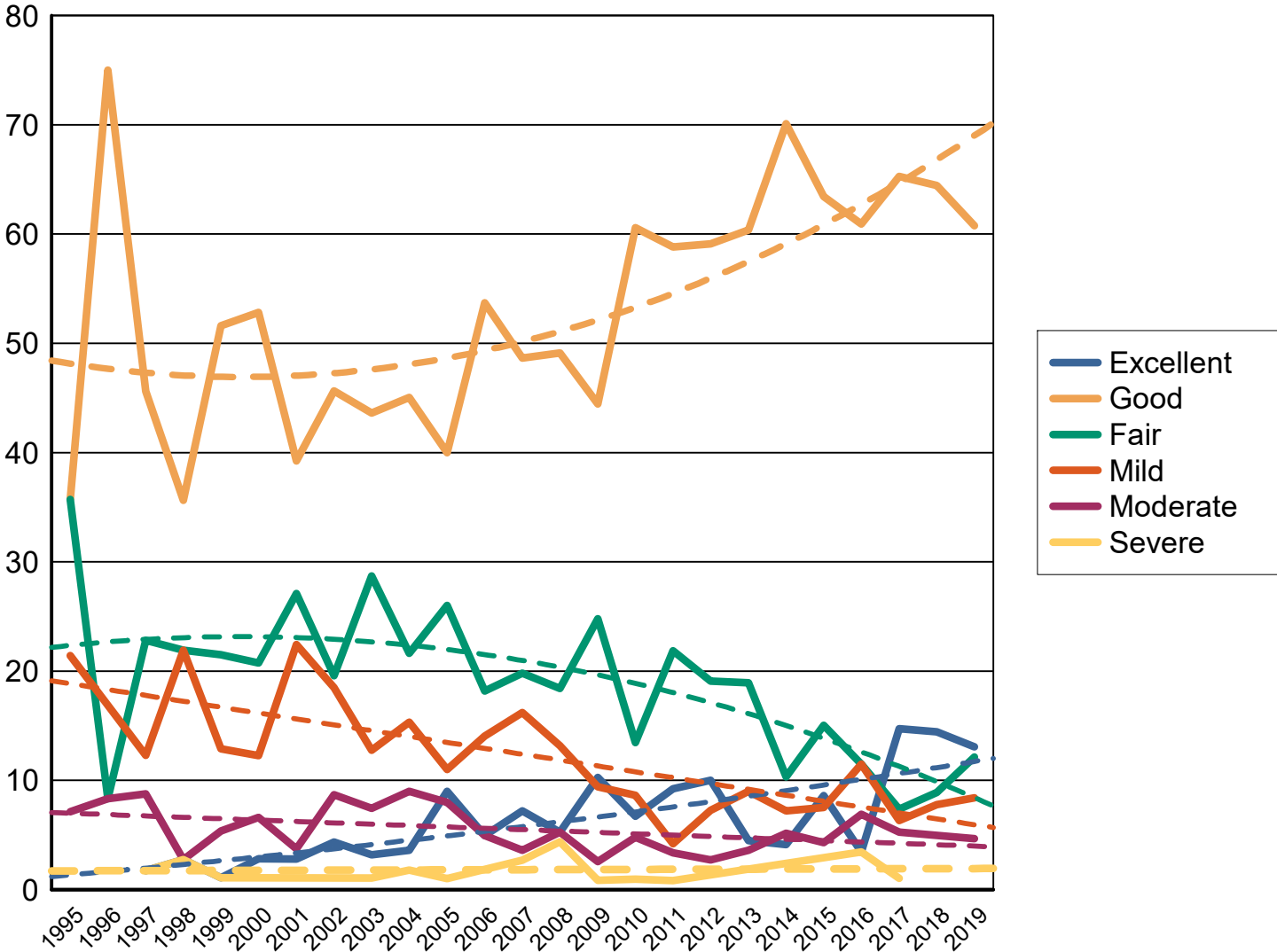


All data as of 12-31-2019

Dysplastic rank, all breeds with more than 100 cases

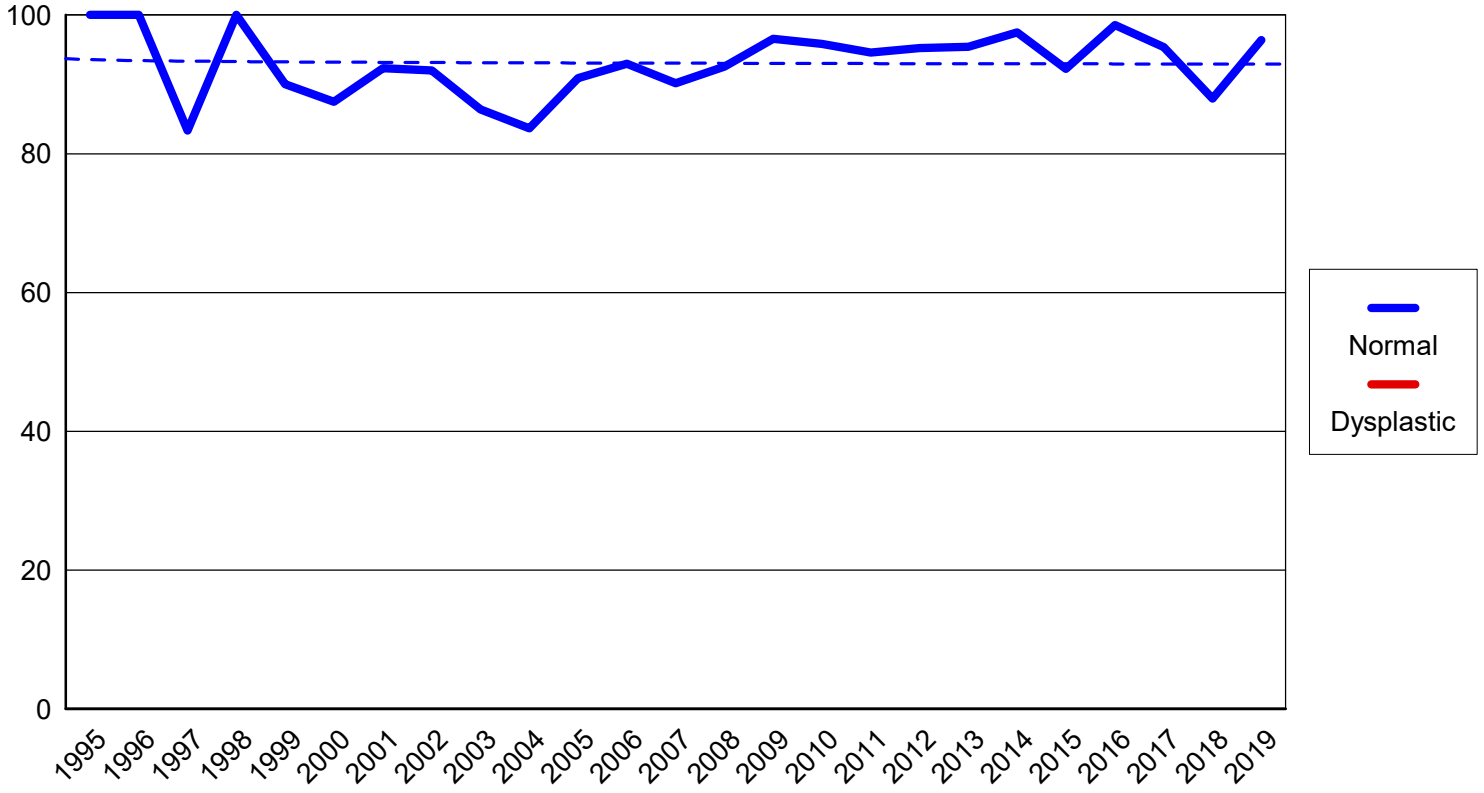
		<i>Normals</i>		<i>Equival or Carrier</i>		<i>Abnormal</i>	
Hips	46 of 194	1838	78.51%	90	3.84%	413	17.64%
Elbow	52 of 136	1245	93.47%	2	0.15%	85	6.38%
Cardiac		713	98.62%	6	0.83%	4	0.55%
Thyroid		351	91.41%	28	7.29%	5	1.30%
Advanced Cardiac		58	98.31%	1	1.69%	0	
OFA EYE Registry		84	100.00%	0		0	
Degenerative Myelopathy		255	70.25%	100	27.55%	8	2.20%
Patella		12	100.00%	0		0	
Shoulder		3	100.00%	0		0	

Hip percentages by rating with trendlines



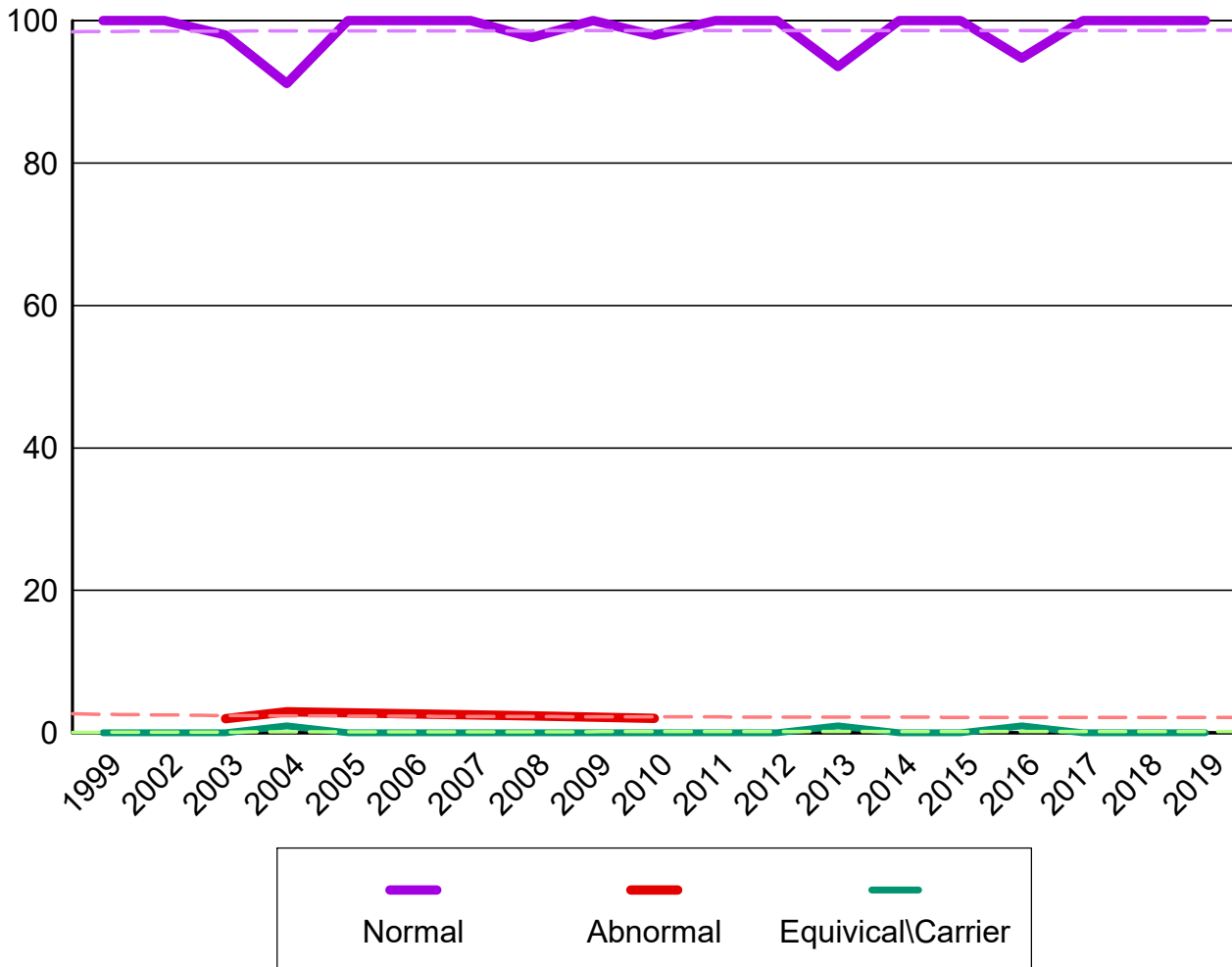
SHILOH SHEPHERD

Elbow percentages by rating with trendlines



CARDIAC

SHILOH SHEPHERD



Percent submitted to the open registry

Hips

Report year	Cases	Excellent %	Good %	Fair %	Borderline %	Mild %	Moderate %	Severe %
1993	2	0	0	1 50.00%	0	0	0	1 50.00%
1994	4	0	3 75.00%	1 25.00%	0	0	0	0
1995	14	0	5 35.71%	5 35.71%	0	3 21.43%	1 7.14%	0
1996	12	0	9 75.00%	1 8.33%	1 8.33%	0	1 8.33%	0
1997	57	1 1.75%	26 45.61%	13 22.81%	4 7.02%	7 12.28%	5 8.77%	1 1.75%
1998	73	2 2.74%	26 35.62%	16 21.92%	9 12.33%	16 21.92%	2 2.74%	2 2.74%
1999	93	1 1.08%	48 51.61%	20 21.51%	6 6.45%	12 12.90%	5 5.38%	1 1.08%
2000	106	3 2.83%	56 52.83%	22 20.75%	5 4.72%	13 12.26%	7 6.60%	0
2001	107	3 2.80%	42 39.25%	29 27.10%	5 4.67%	24 22.43%	4 3.74%	0
2002	92	4 4.35%	42 45.65%	18 19.57%	3 3.26%	17 18.48%	8 8.70%	0
2003	94	3 3.19%	41 43.62%	27 28.72%	3 3.19%	12 12.77%	7 7.45%	1 1.06%
2004	111	4 3.60%	50 45.05%	24 21.62%	4 3.60%	17 15.32%	10 9.01%	2 1.80%
2005	100	9 9.00%	40 40.00%	26 26.00%	5 5.00%	11 11.00%	8 8.00%	1 1.00%
2006	121	6 4.96%	65 53.72%	22 18.18%	5 4.13%	17 14.05%	6 4.96%	0
2007	111	8 7.21%	54 48.65%	22 19.82%	2 1.80%	18 16.22%	4 3.60%	3 2.70%
2008	114	6 5.26%	56 49.12%	21 18.42%	5 4.39%	15 13.16%	6 5.26%	5 4.39%
2009	117	12 10.26%	52 44.44%	29 24.79%	9 7.69%	11 9.40%	3 2.56%	1 0.85%
2010	104	7 6.73%	63 60.58%	14 13.46%	5 4.81%	9 8.65%	5 4.81%	1 0.96%
2011	119	11 9.24%	70 58.82%	26 21.85%	2 1.68%	5 4.20%	4 3.36%	1 0.84%
2012	110	11 10.00%	65 59.09%	21 19.09%	2 1.82%	8 7.27%	3 2.73%	0
2013	111	5 4.50%	67 60.36%	21 18.92%	4 3.60%	10 9.01%	4 3.60%	0
2014	97	4 4.12%	68 70.10%	10 10.31%	3 3.09%	7 7.22%	5 5.15%	0

Percent submitted to the open registry

Hips

<i>Report year</i>	<i>Cases</i>	<i>Excellent</i> %	<i>Good</i> %	<i>Fair</i> %	<i>Borderline</i> %	<i>Mild</i> %	<i>Moderate</i> %	<i>Severe</i> %
2015	93	8	59	14	1	7	4	0
	33.33%	8.60%	63.44%	15.05%	1.08%	7.53%	4.30%	
2016	87	3	53	10	2	10	6	3
	43.68%	3.45%	60.92%	11.49%	2.30%	11.49%	6.90%	3.45%
2017	95	14	62	7	0	6	5	1
	43.16%	14.74%	65.26%	7.37%		6.32%	5.26%	1.05%
2018	90	13	58	8	4	7	0	0
	48.89%	14.44%	64.44%	8.89%	4.44%	7.78%		
2019	107	14	65	13	1	9	5	0
	47.66%	13.08%	60.75%	12.15%	0.93%	8.41%	4.67%	
Totals	2,341	152	1,245	441	90	271	118	24
		6.49%	53.18%	18.84%	3.84%	11.58%	5.04%	1.03%

Elbow

<i>Report Year</i>	<i>Cases</i>	<i>Normal %</i>	<i>Grade 1 %</i>	<i>Grade 2 %</i>	<i>Grade 3 %</i>	<i>Borderline %</i>
1995	2	2 100.00%				
1996	2	2 100.00%				
1997	6	5 83.33%	1 16.67%			
1998	8	8 100.00%				
1999	10	9 90.00%	1 10.00%			
2000	8	7 87.50%	1 12.50%			
2001	13	12 92.31%	1 7.69%			
2002	25	23 92.00%	2 8.00%			
2003	44	38 86.36%	2 4.55%	2 4.55%	1 2.27%	1 2.27%
2004	49	41 83.67%	3 6.12%	4 8.16%	1 2.04%	
2005	44	40 90.91%	4 9.09%			
2006	57	53 92.98%	4 7.02%			
2007	71	64 90.14%	5 7.04%	2 2.82%		
2008	94	87 92.55%	7 7.45%			
2009	87	84 96.55%	3 3.45%			
2010	72	69 95.83%	3 4.17%			
2011	92	87 94.57%	5 5.43%			
2012	84	80 95.24%	4 4.76%			
2013	87	83 95.40%	3 3.45%	1 1.15%		
2014	80	78 97.50%	2 2.50%			
2015	77	71 92.21%	4 5.19%	2 2.60%		

Elbow

<i>Report Year</i>	<i>Cases</i>	<i>Normal</i> <i>%</i>	<i>Grade 1</i> <i>%</i>	<i>Grade 2</i> <i>%</i>	<i>Grade 3</i> <i>%</i>	<i>Borderline</i> <i>%</i>
2016	68	67 98.53%		1 1.47%		
2017	86	82 95.35%	2 2.33%	1 1.16%		1 1.16%
2018	83	73 87.95%	10 12.05%			
2019	83	80 96.39%	2 2.41%	1 1.20%		
Totals	1,332	1,245 93.47%	69 5.18%	14 1.05%	2 0.15%	2 0.15%

Advanced Cardiac

<i>Report year</i>	<i>Cases</i>	<i>Normal</i>	<i>% Normal</i>	<i>Abnormal</i>	<i>% Abnormal</i>	<i>Carrier</i>	<i>% Carrier</i>
Shiloh Shepherd							
2016	5	5	100.0				
2017	14	13	92.9			1	7.1
2018	17	17	100.0				
2019	23	23	100.0				
Totals	59	58	98.3			1	1.7

Cardiac

<i>Report year</i>	<i>Cases</i>	<i>Normal</i>	<i>% Normal</i>	<i>Abnormal</i>	<i>% Abnormal</i>	<i>Equivocal</i>	<i>% Equivocal</i>
Shiloh Shepherd							
1999	1	1	100.0				
2002	29	29	100.0				
2003	50	49	98.0	1	2.0		
2004	34	31	91.2	1	2.9	2	5.9
2005	35	35	100.0				
2006	41	41	100.0				
2007	49	49	100.0				
2008	42	41	97.6	1	2.4		
2009	47	47	100.0				
2010	49	48	98.0	1	2.0		
2011	59	59	100.0				
2012	49	49	100.0				
2013	31	29	93.6			2	6.5
2014	34	34	100.0				
2015	63	63	100.0				
2016	38	36	94.7			2	5.3
2017	29	29	100.0				
2018	18	18	100.0				
2019	25	25	100.0				
Totals	723	713	98.6	4	0.6	6	0.8

Degenerative Myelopathy

<i>Report year</i>	<i>Cases</i>	<i>Normal</i>	<i>% Normal</i>	<i>Abnormal</i>	<i>% Abnormal</i>	<i>Carrier</i>	<i>% Carrier</i>
Shiloh Shepherd							
2009	10	6	60.0			4	40.0
2010	31	19	61.3			12	38.7
2011	65	51	78.5	2	3.1	12	18.5
2012	78	58	74.4	1	1.3	19	24.4
2013	28	22	78.6			6	21.4
2014	55	34	61.8	1	1.8	20	36.4
2015	47	33	70.2			14	29.8
2016	17	10	58.8	3	17.7	4	23.5
2017	8	5	62.5			3	37.5
2018	10	7	70.0			3	30.0
2019	14	10	71.4	1	7.1	3	21.4
Totals	363	255	70.3	8	2.2	100	27.6

Eyes

<i>Report year</i>	<i>Cases</i>	<i>Normal</i>	<i>% Normal</i>	<i>Abnormal</i>	<i>% Abnormal</i>	<i>Breeder opt.</i>	<i>% Breeder opt.</i>
Shiloh Shepherd							
2012	1					1	100.0
2013	6	6	100.0				
2014	12	11	91.7			1	8.3
2015	14	13	92.9			1	7.1
2016	12	12	100.0				
2017	16	15	93.8			1	6.3
2018	16	13	81.3			3	18.8
2019	7	7	100.0				
Totals	84	77	91.7			7	8.3

Patella

<i>Report year</i>	<i>Cases</i>	<i>Normal</i>	<i>% Normal</i>	<i>Abnormal</i>	<i>% Abnormal</i>	<i>Carrier</i>	<i>% Carrier</i>
Shiloh Shepherd							
2001	1	1	100.0				
2015	2	2	100.0				
2016	1	1	100.0				
2017	4	4	100.0				
2019	4	4	100.0				
Totals	12	12	100.0				

Shoulder

<i>Report year</i>	<i>Cases</i>	<i>Normal</i>	<i>% Normal</i>	<i>Abnormal</i>	<i>% Abnormal</i>		
Shiloh Shepherd							
2003	1	1	100.0				
2009	1	1	100.0				
2017	1	1	100.0				
Totals	3	3	100.0				

Thyroid

<i>Report year</i>	<i>Cases</i>	<i>Normal</i>	<i>% Normal</i>	<i>Abnormal</i>	<i>% Abnormal</i>	<i>Equivocal</i>	<i>% Equivocal</i>
Shiloh Shepherd							
1999	1	1	100.0				
2001	1					1	100.0
2002	5	5	100.0				
2003	29	26	89.7	1	3.5	2	6.9
2004	23	21	91.3			2	8.7
2005	19	17	89.5			2	10.5
2006	21	21	100.0				
2007	26	25	96.2			1	3.9
2008	29	27	93.1			2	6.9
2009	19	17	89.5	1	5.3	1	5.3
2010	18	14	77.8			4	22.2
2011	37	35	94.6	1	2.7	1	2.7

Thyroid

<i>Report year</i>	<i>Cases</i>	<i>Normal</i>	<i>% Normal</i>	<i>Abnormal</i>	<i>% Abnormal</i>	<i>Equivocal</i>	<i>% Equivocal</i>
2012	29	25	86.2			4	13.8
2013	28	23	82.1	2	7.1	3	10.7
2014	21	20	95.2			1	4.8
2015	18	17	94.4			1	5.6
2016	10	10	100.0				
2017	22	21	95.5			1	4.6
2018	12	12	100.0				
2019	16	14	87.5			2	12.5
Totals	384	351	91.4	5	1.3	28	7.3